

L3MBTL1 antibody (pAb)

Catalog Nos: 39182, 39183

RRID: AB_2615063

Isotype: Serum

Application(s): ChIP, WB

Reactivity: Human, Wide Range Predicted

Volumes: 100 µl, 10 µl

Purification: None

Host: Rabbit

Molecular Weight: 100 kDa

Background: L3MBTL1 is a human homolog of the Drosophila l(3)mbt protein. Located on chromosome 20q12, L3MBT1 is a member of the malignant brain tumor (MBT) protein family and directly compacts chromatin in a strictly histone methylation dependent fashion. L3MBTL1 functions as a transcriptional repressor in a manner that requires its three MBT domains, which were predicted to bind methylated lysines of histones. L3MBTL1 binds to Lys20 of Histone H4 that has been mono- or dimethylated, as well as to Histone H1 isotype b methylated at lysine 26. L3MBTL1 is a complex molecule with a Zinc-finger and a sterile alpha motif (SAM).

Immunogen: This L3MBTL1 antibody was raised against a His-Tagged fusion protein corresponding to amino acids 1-215 of human L3MBTL1.

Buffer: Rabbit serum containing 30% glycerol and 0.035% sodium azide. Sodium azide is highly toxic.

Application Notes:

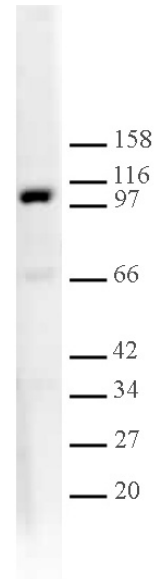
Applications Validated by Active Motif:

WB*: 1:500 - 1:2,000 dilution

*Note: many chromatin-bound proteins are not soluble in a low salt nuclear extract and fractionate to the pellet. Therefore, we recommend a High Salt / Sonication Protocol when preparing nuclear extracts for Western blot.

Storage and Guarantee: Some products may be shipped at room temperature. This will not affect their stability or performance. Avoid repeated freeze/thaw cycles by aliquoting items into single-use fractions for storage at -20°C for up to 2 years. Keep all reagents on ice when not in storage. This product is guaranteed for 12 months from date of receipt.

This product is for research use only and is not for use in diagnostic procedures.



L3MBTL1 antibody tested by Western blot.

Nuclear extract of HeLa cells (20 µg) was probed with L3MBTL1 antibody (1:2,000 dilution).