

APE antibody (pAb)

Catalog No: 39200**RRID:** AB_2793181**Application(s):** WB**Reactivity:** Human**Quantity:** 100 µg**Purification:** Affinity Purified**Host:** Rabbit**Isotype:** IgG**Concentration:** 0.5 µg/µl**Molecular Weight:** 37 kDa

Background: APE (apurinic endonuclease or apyrimidinic endonuclease) is a multifunctional DNA repair enzyme. The main role of APE is to create a nick in the phosphodiester backbone of the AP site that is created when DNA glycosylase removes the damaged base. Four types of APE (AP endonucleases) are classified according to their site of incision.

Immunogen: This APE antibody was raised against a mixture of synthetic peptides corresponding to amino acid residues 36-52 and 216-232 of human APE.

Buffer: PBS containing 0.02% sodium azide. Sodium azide is highly toxic.

Application Notes:

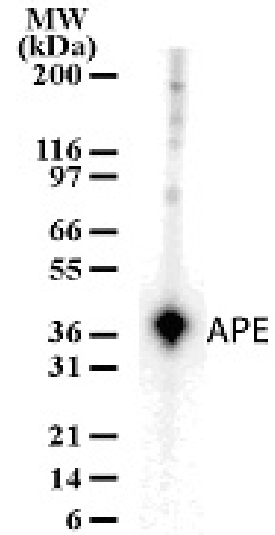
Applications Validated by Active Motif:

WB: 1 - 2 µg/ml dilution

For optimal results, primary antibody incubations should be performed at room temperature. The addition of 0.1% Tween 20 to all blocking solutions may also reduce background. Individual optimization may be required.

Storage and Guarantee: Some products may be shipped at room temperature. This will not affect their stability or performance. Store at 4°C for short term. Avoid repeated freeze/thaw cycles by aliquoting items into single-use fractions for storage at -20°C for up to 2 years. Keep all reagents on ice when not in storage. This product is guaranteed for 12 months from date of receipt.

This product is for research use only and is not for use in diagnostic procedures.

**APE pAb tested by Western blot.**

APE detection by Western blot. The analysis of APE was performed using HeLa whole-cell extract and APE pAb at a 2 µg/ml dilution.