

MRE11 antibody (pAb)

Catalog No: 39220**RRID:** AB_2793190**Application(s):** WB**Reactivity:** Human**Quantity:** 100 µg**Purification:** Affinity Purified**Host:** Rabbit**Isotype:** IgG**Concentration:** 0.5 µg/µl**Molecular Weight:** 81 kDa

Background: MRE11 (ATLD or HNGS1) is a component of the MRN complex, which plays a central role in double-strand break (DSB) repair, DNA recombination, maintenance of telomere integrity and meiosis. The MRN complex possesses single-strand endonuclease activity and double-strand-specific 3'-5' exonuclease activity, which are provided by MRE11 (ATLD or HNGS1). Rad50 may be required to bind DNA ends and hold them in close proximity. This could facilitate searches for short or long regions of sequence homology in the recombining DNA templates, and may also stimulate the activity of DNA ligases and/or restrict the nuclease activity of MRE11 (ATLD or HNGS1) to prevent nucleolytic degradation past a given point. The complex may also be required for DNA damage signaling via activation of the ATM kinase. In telomeres, the MRN complex may modulate t-loop formation.

Immunogen: This MRE11 antibody was raised against a synthetic peptide corresponding to human MRE11.

Buffer: PBS containing 0.02% sodium azide. Sodium azide is highly toxic.

Application Notes:

Applications Validated by Active Motif:

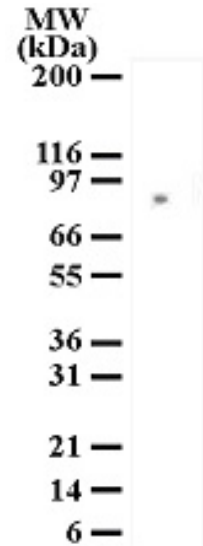
WB: 1 - 2 µg/ml dilution

For optimal results, primary antibody incubations should be performed at room temperature. The addition of 0.1% Tween 20 to all blocking solutions may also reduce background. Individual optimization may be required.

Storage and Guarantee: Some products may be shipped at room temperature.

This will not affect their stability or performance. Store at 4°C for short term. Avoid repeated freeze/thaw cycles by aliquoting items into single-use fractions for storage at -20°C for up to 2 years. Keep all reagents on ice when not in storage. This product is guaranteed for 12 months from date of receipt.

This product is for research use only and is not for use in diagnostic procedures.

**MRE11 pAb tested by Western blot.**

MRE11 detection by Western blot. The analysis was performed using 293 whole-cell extract and MRE11 pAb at a 2 µg/ml dilution.