

UBE2V1 α antibody (pAb)**Catalog No:** 39225**RRID:** AB_2793195**Application(s):** WB**Reactivity:** Human**Quantity:** 100 μ g**Purification:** Affinity Purified**Host:** Rabbit**Isotype:** IgG**Concentration:** 0.5 μ g/ μ l**Molecular Weight:** 20 kDa

Background: UBE2N and its variants UBE2V1 α and β are members of the E2 ubiquitin-conjugating enzyme family, and the homologs of yeast UBC13. The UBE2V1/UBE2N heterodimer catalyzes the synthesis of non-canonical poly-ubiquitin chains that are linked through Lys63. This type of poly-ubiquitination activates IKK (IKK α , IKK β & IKK γ) and does not seem to involve protein degradation by the proteasome. UBE2V1 plays a role in the activation of NF κ B (NF κ B p50 & NF κ B p65) mediated by IL-1 β , TNF, TRAF6 and TRAF2.

Immunogen: This UBE2V1 α antibody was raised against a peptide corresponding to amino acid residues 31-49 of human UBE2V1 α .

Buffer: PBS containing 0.2% gelatin and 0.05% sodium azide. Sodium azide is highly toxic.

Application Notes:

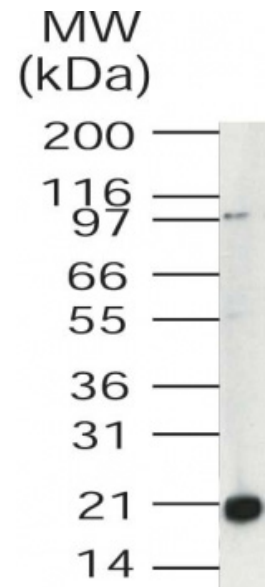
Applications Validated by Active Motif:

WB: 1 - 3 μ g/ml dilution

For optimal results, primary antibody incubations should be performed at room temperature. The addition of 0.1% Tween 20 to all blocking solutions may also reduce background. Individual optimization may be required.

Storage and Guarantee: Some products may be shipped at room temperature. This will not affect their stability or performance. Store at 4°C for short term. Avoid repeated freeze/thaw cycles by aliquoting items into single-use fractions for storage at -20°C for up to 2 years. Keep all reagents on ice when not in storage. This product is guaranteed for 12 months from date of receipt.

This product is for research use only and is not for use in diagnostic procedures.



UBE2V1 α pAb tested by Western blot. Detection of UBE2V1 α by Western blot. The analysis was performed using HeLa whole-cell extract and UBE2V1 α pAb at a 2 μ g/ml dilution.