

## INCENP antibody (mAb)

**Catalog Nos:** 39259, 39260

**RRID:** AB\_2715518

**Clone:** 58-217-2

**Isotype:** IgG1

**Application(s):** ICC, IF

**Reactivity:** Human, Mouse, Wide Range Predicted

**Quantities:** 200 µg, 10 µg

**Purification:** Protein A Chromatography

**Host:** Mouse

**Concentration:** 1 µg/µl

**Molecular Weight:** 140 kDa

**Background:** INCENP (Inner Centromere Protein) is part of the chromosomal passenger complex that associates with chromosomes and regulates mitosis and meiosis. INCENP forms a scaffold holding the CP complex together and plays a role in the regulation of Aurora B and Aurora C kinase activity.

**Immunogen:** This INCENP antibody was raised against a recombinant protein corresponding to amino acid residues 231-398 of human INCENP.

**Buffer:** Purified IgG in PBS with 30% glycerol and 0.035% sodium azide. Sodium azide is highly toxic.

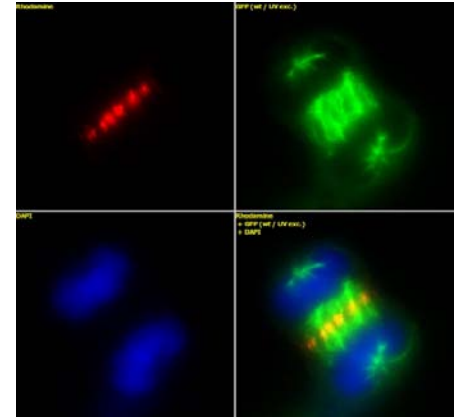
### Application Notes:

Applications Validated by Active Motif:

ICC/IF: 1:500 - 1:1,000 dilution

**Storage and Guarantee:** Some products may be shipped at room temperature. This will not affect their stability or performance. Avoid repeated freeze/thaw cycles by aliquoting items into single-use fractions for storage at -20°C for up to 2 years. Keep all reagents on ice when not in storage. This product is guaranteed for 12 months from date of receipt.

This product is for research use only and is not for use in diagnostic procedures.



**INCENP mAb tested by immunofluorescence.** Top left: HeLa cells stained with INCENP monoclonal antibody at a 1:1,000 dilution. Top right: Same cells stained with alpha Tubulin mAb. Bottom left: Same cells stained with DAPI. Bottom right: Merge of all 3 images.