

## C/EBP $\alpha$ antibody (pAb)

**Catalog No:** 39306

**Host:** Rabbit

**Isotype:** IgG

**Application:** ChIP, EMSA, IF, WB

**Reactivity:** Human, Rat

**Purification:** Affinity Purified

**Volume:** 200  $\mu$ l

**Concentration:** 0.5  $\mu$ g/ $\mu$ l

**Molecular Weight:** 45 kDa

**Clone:** N/A

**Background:** C/EBP-alpha is a bZIP transcription factor that can bind as a homodimer to promoters. It can also heterodimerize with C/EBP-beta and C/EBP-gamma.

**Immunogen:** This antibody was raised against a synthetic peptide corresponding to amino acid residue(s) 1-14 of human C/EBP.

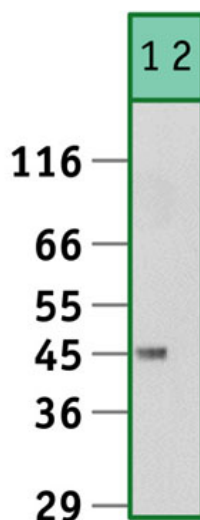
**Buffer:** PBS containing 0.2% gelatin, 0.01% thimerosal and 0.1% sodium azide. Thimerosal and sodium azide are highly toxic.

**Application Notes:** This antibody is suitable for electrophoretic mobility shift assays (EMSA) and Western blot. We recommend adding 2-4 $\mu$ l of antibody to the reaction mixture when performing supershift experiments. We also recommend the use of Tris-glycine electrophoresis buffer.

For Western blot experiments, we recommend using a 1:1000 dilution, a 42 kDa band should be detected. For optimal results, primary antibody incubations should be performed at room temperature. The addition of 0.1% Tween 20 to all Blotto solutions may also reduce background. Individual optimization may be required.

**Storage and Guarantee:** Antibodies in solution can be stored at -80°C for 2 years. Avoid repeated freeze/thaw cycles and keep on ice when not in storage. This product is guaranteed for 6 months from date of arrival.

**Application Key:** ChIP = Chromatin Immunoprecipitation; FACS = Flow Cytometry; IF = Immunofluorescence; IHC = Immunohistochemistry; IP = Immunoprecipitation; WB = Western Blot



Detection of C/EBP alpha by Western blot analysis. Positive detection of C/EBP alpha in nuclear extracts derived from Rat Liver extracts at 1:1000 (lane1) dilution. Lane 2 illustrates peptide competition.