

MAD2L1 antibody (mAb)

Catalog Nos: 39399, 39400**RRID:** AB_2793241**Clone:** 17D10**Isotype:** IgG1**Application(s):** WB**Reactivity:** Human, Mouse, Wide Range Predicted**Quantities:** 200 µg, 10 µg**Purification:** Protein G Chromatography**Host:** Mouse**Concentration:** 1 µg/µl**Molecular Weight:** 23 kDa

Background: MAD2L1 (aka HSMAD2, MAD2, MAD2-like 1) is the human homolog of the budding yeast MAD2, or mitotic arrest deficient 2 gene. MAD2L1 is a component of the mitotic spindle assembly checkpoint, which monitors the attachment of the mitotic spindle to the kinetochores of segregating chromosomes and delays the onset of anaphase until attachment is complete and the chromosomes are properly aligned on the metaphase plate. MAD2L1 associates only with unattached kinetochores in prometaphase, and prevents cell cycle progression by associating with the Anaphase Promoting Complex (APC), specifically restricting the activity of the CDC20 protein.

Immunogen: This MAD2L1 antibody was raised against full-length recombinant human MAD2L1.

Buffer: Purified IgG in 70 mM Tris (pH 8), 105 mM NaCl, 31 mM glycine, 0.07 mM EDTA, 30% glycerol and 0.035% sodium azide. Sodium azide is highly toxic.

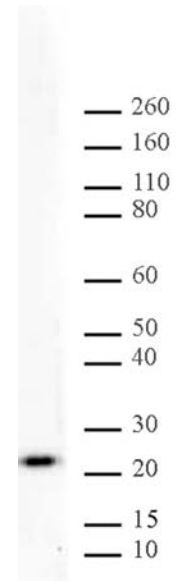
Application Notes:

Applications Validated by Active Motif:

WB: 2 - 5 µg/ml dilution

Storage and Guarantee: Some products may be shipped at room temperature. This will not affect their stability or performance. Avoid repeated freeze/thaw cycles by aliquoting items into single-use fractions for storage at -20°C for up to 2 years. Keep all reagents on ice when not in storage. This product is guaranteed for 12 months from date of receipt.

This product is for research use only and is not for use in diagnostic procedures.

**MAD2L1 mAb (Clone 17D10) tested by Western blot.**

MAD2L1 detection by Western blot. The analysis was performed using 20 µg HEK293 whole-cell extract and MAD2L1 mAb (Clone 17D10) at a 2 µg/ml dilution.