

## Pht1 / Histone H2A.Z antibody (pAb)

**Catalog Nos:** 39640, 39641

**RRID:** AB\_2793287

**Isotype:** IgG

**Application(s):** WB

**Reactivity:** Fission Yeast

**Volumes:** 100 µl, 10 µl

**Purification:** Affinity Purified

**Host:** Rabbit

**Molecular Weight:** 15 kDa

**Background:** Pht1 is the *S. pombe* homolog of histone H2AZ and is involved in transcriptional regulation and chromosome architecture. It is also implicated in suppressing the accumulation of anti-sense transcripts through interaction with RNAi machinery and heterochromatin proteins.

**Immunogen:** This Pht1 / H2AZ antibody was raised against a peptide corresponding to the C-terminus of Pht1, the histone H2A variant in *S. pombe*.

**Buffer:** Purified IgG in 70 mM Tris (pH 8), 105 mM NaCl, 31 mM glycine, 0.07 mM EDTA, 30% glycerol and 0.035% sodium azide. Sodium azide is highly toxic.

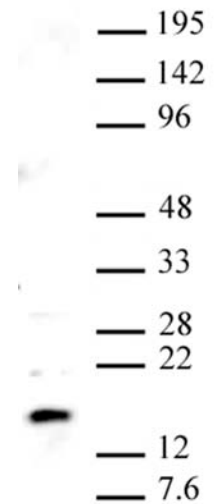
### Application Notes:

Applications Validated by Active Motif:

WB: 1:500 - 1:1,000 dilution

**Storage and Guarantee:** Some products may be shipped at room temperature. This will not affect their stability or performance. Avoid repeated freeze/thaw cycles by aliquoting items into single-use fractions for storage at -20°C for up to 2 years. Keep all reagents on ice when not in storage. This product is guaranteed for 12 months from date of receipt.

This product is for research use only and is not for use in diagnostic procedures.



**Pht1 / H2AZ pAb tested by Western blot.**  
*S. pombe* whole-cell extract probed with Pht1 / H2AZ pAb (1:500 dilution).