

KAT2A (GCN5) antibody (pAb)

Catalog Nos: 39831, 39832

RRID: AB_2793359

Isotype: Serum

Application(s): IP, WB

Reactivity: Human

Volumes: 100 μ l, 10 μ l

Purification: None

Host: Rabbit

Molecular Weight: 100 kDa

Background: GCN5 (General control of nutrition 5, KAT2A) is a histone acetyltransferase (HAT) and serves as a transcriptional activator. GCN5 is a component of the SAGA and ATAC complexes, which have histone acetyltransferase activity for histones H3 and H4. GCN5 is required for neural tube closure and embryonic development.

Immunogen: This GCN5 antibody was raised against a peptide within the N-terminal region of human GCN5.

Buffer: Rabbit serum containing 30% glycerol and 0.035% sodium azide. Sodium azide is highly toxic.

Application Notes:

Applications Validated by Active Motif:

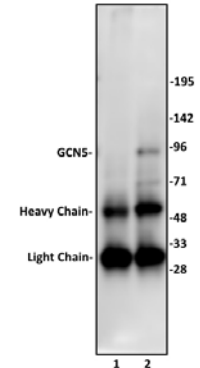
IP: 10 μ l per IP

WB*: 1:500 - 1:1,000 dilution

*Note: many chromatin-bound proteins are not soluble in a low salt nuclear extract and fractionate to the pellet. Therefore, we recommend a High Salt / Sonication Protocol when preparing nuclear extracts for Western blot.

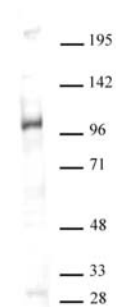
Storage and Guarantee: Some products may be shipped at room temperature. This will not affect their stability or performance. Avoid repeated freeze/thaw cycles by aliquoting items into single-use fractions for storage at -20°C for up to 2 years. Keep all reagents on ice when not in storage. This product is guaranteed for 12 months from date of receipt.

This product is for research use only and is not for use in diagnostic procedures.



GCN5 antibody (pAb) tested by Immunoprecipitation.

10 μ l of GCN5 antibody was used to immunoprecipitate GCN5 from 500 μ g of MCF-7 nuclear cell extract (lane 2). 10 μ l of rabbit IgG was used as a negative control (lane 1). The immunoprecipitated protein was detected by Western blotting using the GCN5 antibody at a dilution of 1:500.



GCN5 antibody (pAb) tested by Western blot.

Detection of GCN5 by Western blot analysis. Nuclear extract of MCF-7 cells (30 μ g) probed with GCN5 antibody at a dilution of 1:500.