

ELP3 antibody (pAb)

Catalog Nos: 39949, 39950**RRID:** AB_2793404**Isotype:** IgG**Application(s):** WB**Reactivity:** Human**Volumes:** 100 µl, 10 µl**Purification:** Affinity Purified**Host:** Rabbit**Concentration:** 0.814 µg/µl**Molecular Weight:** 62 kDa

Background: ELP3 (Elongator Protein 3, also called KAT9) was originally identified as a component of the RNA polymerase II elongator complex, involved in transcriptional elongation by RNA Pol II. Elongator, through ELP3 may play a role in chromatin remodeling and is involved in acetylation of histones H3 and possibly H4. ELP3 may also play a role as a DNA demethylase in vertebrates, as it is important for paternal DNA demethylation.

Immunogen: This ELP3 antibody was raised against a peptide within the N-terminal half of human ELP3.

Buffer: Purified IgG in 70 mM Tris (pH 8), 105 mM NaCl, 31 mM glycine, 0.07 mM EDTA, 30% glycerol and 0.035% sodium azide. Sodium azide is highly toxic.

Application Notes:

Applications Validated by Active Motif:

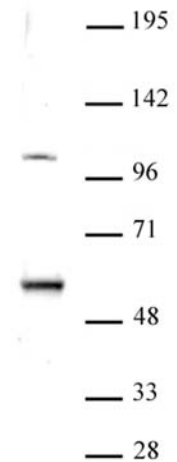
WB*: 1:500 - 1:1,000 dilution

The addition of 0.05% Tween 20 in the blocking buffer and primary antibody incubation buffer is recommended to aid in detection by Western blot. Individual optimization may be required.

*Note: many chromatin-bound proteins are not soluble in a low salt nuclear extract and fractionate to the pellet. Therefore, we recommend a High Salt / Sonication Protocol when preparing nuclear extracts for Western blot.

Storage and Guarantee: Some products may be shipped at room temperature. This will not affect their stability or performance. Avoid repeated freeze/thaw cycles by aliquoting items into single-use fractions for storage at -20°C for up to 2 years. Keep all reagents on ice when not in storage. This product is guaranteed for 12 months from date of receipt.

This product is for research use only and is not for use in diagnostic procedures.



ELP3 antibody (pAb) tested by Western blot.
Nuclear extract of K-562 cells (20 µg) probed with ELP3 antibody (pAb) at a dilution of 1:500.