

ERR- α antibody (pAb)

Catalog Nos: 61047, 61048

RRID: AB_2793486

Isotype: IgG

Application(s): WB

Reactivity: Human

Volumes: 100 μ l, 10 μ l

Purification: Affinity Purified

Host: Rabbit

Molecular Weight: 50 kDa

Background: ERR- α (Estrogen-related receptor alpha, NR3B1) is an orphan nuclear receptor similar to the Estrogen Receptor. It is a sequence-specific DNA binding transcriptional activator that is constitutively active in the absence of ligand binding. No true physiological ligands have been found, but estrogen-like compounds from plants have been shown to activate ERR- α . ERR- α and ER- α have been found to regulate an overlapping set of genes, and ERR- α appears to modulate the activity of ER- α in some tissue types. ERR- α regulates genes involved in mitochondrial biogenesis, gluconeogenesis, oxidative phosphorylation, and fatty acid metabolism. ERR- α knockout mice display impaired fat metabolism and absorption.

Immunogen: This ERR-alpha antibody was raised against a peptide within the C-terminal region of human ERR alpha.

Buffer: Purified IgG in 70 mM Tris (pH 8), 105 mM NaCl, 31 mM glycine, 0.07 mM EDTA, 30% glycerol and 0.035% sodium azide. Sodium azide is highly toxic.

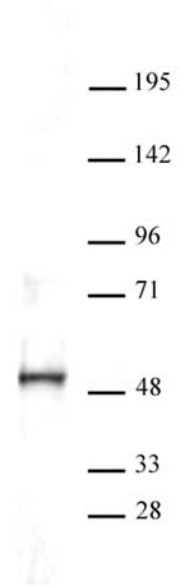
Application Notes:

Applications Validated by Active Motif:

WB: 1:500 - 1:1,000 dilution

Storage and Guarantee: Some products may be shipped at room temperature. This will not affect their stability or performance. Avoid repeated freeze/thaw cycles by aliquoting items into single-use fractions for storage at -20°C for up to 2 years. Keep all reagents on ice when not in storage. This product is guaranteed for 12 months from date of receipt.

This product is for research use only and is not for use in diagnostic procedures.



Western blot of ERR- α antibody.

Nuclear extract of MDA-MB-231 cells (20 μ g per lane) probed with ERR alpha antibody at a dilution of 1:500.