

BCL11A / CTIP1 antibody (pAb)

Catalog Nos: 61051, 61052

RRID: AB_2793488

Isotype: IgG

Application(s): IP, WB

Reactivity: Human

Volumes: 100 µl, 10 µl

Purification: Affinity Purified

Host: Rabbit

Molecular Weight: 130 kDa

Background: BCL11A / CTIP1 (B-cell CLL/lymphoma 11A, COUP-TF-interacting protein 1) is a transcriptional regulator, a myeloid and B-cell proto-oncogene and plays important roles in leukemogenesis and hematopoiesis. BCL11A / CTIP1 is involved in regulating hemoglobin gene expression. BCL11A regulates hemoglobin gene switching during fetal development and silencing of γ -globin expression in adults. BCL11A interacts with the Mi-2/NuRD chromatin remodeling complexes, as well as the erythroid transcription factors GATA1 and FOG1. Abundant expression of full-length forms of BCL11A is developmentally restricted to adult erythroid cells.

Immunogen: This BCL11A / CTIP1 antibody was raised against a peptide within the N-terminal region of human BCL11A / CTIP1.

Buffer: Purified IgG in 70 mM Tris (pH 8), 105 mM NaCl, 31 mM glycine, 0.07 mM EDTA, 30% glycerol and 0.035% sodium azide. Sodium azide is highly toxic.

Application Notes:

Applications Validated by Active Motif:

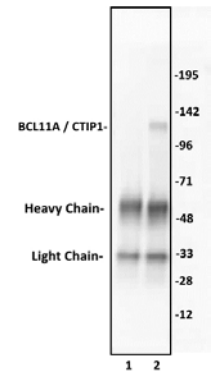
IP: 5 - 10 µl per IP

WB*: 1:1,000 - 1:5,000 dilution

*Note: many chromatin-bound proteins are not soluble in a low salt nuclear extract and fractionate to the pellet. Therefore, we recommend a High Salt / Sonication Protocol when preparing nuclear extracts for Western blot.

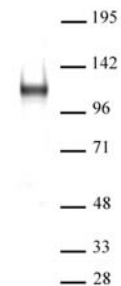
Storage and Guarantee: Some products may be shipped at room temperature. This will not affect their stability or performance. Avoid repeated freeze/thaw cycles by aliquoting items into single-use fractions for storage at -20°C for up to 2 years. Keep all reagents on ice when not in storage. This product is guaranteed for 12 months from date of receipt.

This product is for research use only and is not for use in diagnostic procedures.



BCL11A / CTIP1 antibody (pAb) tested by Immunoprecipitation.

10 µl of BCL11A / CTIP1 antibody was used to immunoprecipitate BCL11A / CTIP1 from 250 µg of Raji nuclear cell extract (lane 2). 10 µl of rabbit IgG was used as a negative control (lane 1). The immunoprecipitated protein was detected by Western blotting using the BCL11A / CTIP1 antibody at a dilution of 1:1,000.



BCL11A / CTIP1 antibody (pAb) tested by Western blot.

Nuclear extract of Raji cells (20 µg per lane) probed with BCL11A / CTIP1 antibody at a dilution of 1:1,000.