

FancD2 antibody (pAb)

Catalog Nos: 61057, 61058

RRID: AB_2793491

Isotype: IgG

Application(s): IP, WB

Reactivity: Human

Volumes: 100 µl, 10 µl

Purification: Affinity Purified

Host: Rabbit

Molecular Weight: 150 kDa

Background: **FancD2** (Fanconi anemia complementation group D2) is a protein encoded by a gene mutated in Fanconi anemia, a recessive genetic disorder characterized by chromosomal instability, hypersensitivity to DNA crosslinking agents, increased chromosomal breakage, and defective DNA repair. **FancD2** is monoubiquitinated in response to DNA damage and is required for maintenance of chromosomal stability and the repair of DNA double-strand breaks. FancD2 also likely plays a role in activating the S-phase and G2/M DNA damage checkpoints. It promotes the loading of BRCA2 and FANCD1 onto damaged chromatin and may also be involved in B-cell immunoglobulin isotype switching.

Immunogen: This FancD2 antibody was raised against a peptide within the internal region of human FancD2.

Buffer: Purified IgG in 70 mM Tris (pH 8), 105 mM NaCl, 31 mM glycine, 0.07 mM EDTA, 30% glycerol and 0.035% sodium azide. Sodium azide is highly toxic.

Application Notes:

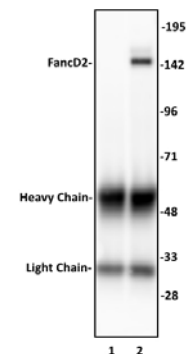
Applications Validated by Active Motif:

IP: 10 µl per IP

WB: 1:500 - 1:5,000 dilution

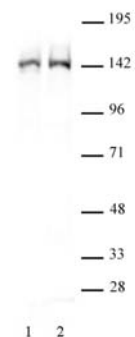
Storage and Guarantee: Some products may be shipped at room temperature. This will not affect their stability or performance. Avoid repeated freeze/thaw cycles by aliquoting items into single-use fractions for storage at -20°C for up to 2 years. Keep all reagents on ice when not in storage. This product is guaranteed for 12 months from date of receipt.

This product is for research use only and is not for use in diagnostic procedures.



FancD2 antibody (pAb) tested by Immunoprecipitation.

10 µl of FancD2 antibody was used to immunoprecipitate FancD2 from 400 µg of HeLa whole cell extract (lane 2). 10 µl of rabbit IgG was used as a negative control (lane 1). The immunoprecipitated protein was detected by Western blotting using the FancD2 antibody at a dilution of 1:500.



Western blot of FancD2 antibody.

Lane 1: HeLa whole-cell extract (40 µg). Lane 2: Nuclear extract (40 µg) of K-562 cells. Both probed with FancD2 antibody (pAb) at a 1:500 dilution.