

DP1 antibody (pAb)

Catalog Nos: 61145, 61146

RRID: AB_2793525

Isotype: IgG

Application(s): WB

Reactivity: Human

Volumes: 100 µl, 10 µl

Purification: Affinity Purified

Host: Rabbit

Molecular Weight: 50 kDa

Background: **DP1** (DRTF1 polypeptide 1, TFDP1) is a transcriptional co-activator and an important regulator of cell cycle progression. It is a member of a protein family first identified through their binding to E2F DNA binding sites. **DP1** forms heterodimers with E2F family members, activating transcription of E2F-responsive genes. **DP1** is also absolutely required for extraembryonic development and embryonic survival.

Immunogen: This DP1 antibody was raised against a recombinant protein corresponding to amino acids 301-410 of human DP1.

Buffer: Purified rabbit IgG in PBS with 30% glycerol and 0.035% sodium azide. Sodium azide is highly toxic.

Application Notes:

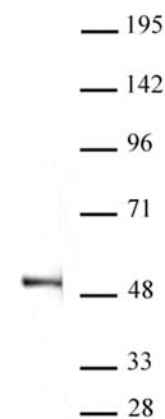
Applications Validated by Active Motif:

WB*: 1:500 - 1:2,000 dilution

*Note: many chromatin-bound proteins are not soluble in a low salt nuclear extract and fractionate to the pellet. Therefore, we recommend a High Salt / Sonication Protocol when preparing nuclear extracts for Western blot.

Storage and Guarantee: Some products may be shipped at room temperature. This will not affect their stability or performance. Avoid repeated freeze/thaw cycles by aliquoting items into single-use fractions for storage at -20°C for up to 2 years. Keep all reagents on ice when not in storage. This product is guaranteed for 12 months from date of receipt.

This product is for research use only and is not for use in diagnostic procedures.



DP1 antibody (pAb) tested by Western blot.

Raji Nuclear cell extract (20 µg) probed with DP1 antibody at a dilution of 1:1,000.