

## UTF1 antibody (pAb)

**Catalog Nos:** 61253, 61254

**RRID:** AB\_2793570

**Isotype:** IgG

**Application(s):** WB

**Reactivity:** Human, Mouse

**Volumes:** 100  $\mu$ l, 10  $\mu$ l

**Purification:** Affinity Purified

**Host:** Rabbit

**Molecular Weight:** 48 kDa

**Background:** The UTF1 (undifferentiated embryonic cell transcription factor 1, hUTF1) gene encodes a protein that acts as a transcriptional coactivator of ATF2. The leucine-zipper domain is required for coactivation activity. UTF1 is also a key chromatin component in ES cells and is involved in chromatin structure and pluripotency.

**Immunogen:** This UTF1 antibody was raised against a peptide within the N-terminal region of human UTF1.

**Buffer:** Purified IgG in PBS with 30% glycerol and 0.035% sodium azide. Sodium azide is highly toxic.

**Application Notes:**

Applications Validated by Active Motif:

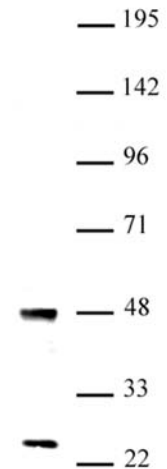
WB\*: 1:500 - 1:1,000 dilution

The addition of 0.05% Tween 20 in the blocking buffer and primary antibody incubation buffer is recommended to aid in detection by Western blot. Individual optimization may be required.

\*Note: many chromatin-bound proteins are not soluble in a low salt nuclear extract and fractionate to the pellet. Therefore, we recommend a High Salt / Sonication Protocol when preparing nuclear extracts for Western blot.

**Storage and Guarantee:** Some products may be shipped at room temperature. This will not affect their stability or performance. Avoid repeated freeze/thaw cycles by aliquoting items into single-use fractions for storage at -20°C for up to 2 years. Keep all reagents on ice when not in storage. This product is guaranteed for 12 months from date of receipt.

This product is for research use only and is not for use in diagnostic procedures.



**UTF1 antibody (pAb) tested by Western blot**  
Nuclear extract of mouse ES cells (20  $\mu$ g) probed with UTF1 antibody (1:1,000).