

XRCC1 antibody (pAb)

Catalog Nos: 61371, 61372

RRID: AB_2793610

Isotype: IgG

Application(s): ICC, IF, WB

Reactivity: Human

Volumes: 100 μ l, 10 μ l

Purification: Affinity Purified

Host: Rabbit

Molecular Weight: 85 kDa

Background: XRCC1 (X-ray repair complementing defective repair in Chinese hamster cells 1) corrects defective DNA strand-break repair and sister chromatid exchange following treatment with ionizing radiation and alkylating agents. XRCC1 is involved in the efficient repair of DNA single-strand breaks formed by exposure to ionizing radiation and alkylating agents. This protein interacts with DNA ligase III, polymerase beta and poly (ADP-ribose) polymerase (PARP) to participate in the base excision repair (BER) pathway.

Immunogen: This antibody was raised against a recombinant protein corresponding to the N-terminal region of human XRCC1.

Buffer: Purified IgG in PBS with 30% glycerol and 0.035% sodium azide. Sodium azide is highly toxic.

Application Notes:

Applications Validated by Active Motif:

ICC/IF: 1:2,000 dilution

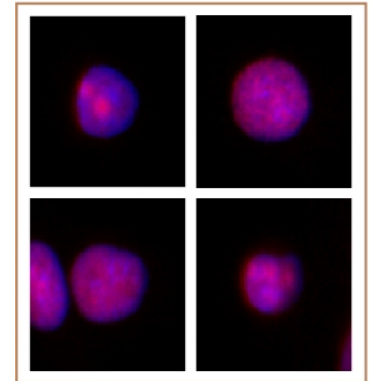
WB*: 1:500 - 1:1,000 dilution

The addition of 0.05% Tween 20 in the blocking buffer and primary antibody incubation buffer is recommended to aid in detection by Western blot. Individual optimization may be required.

*Note: many chromatin-bound proteins are not soluble in a low salt nuclear extract and fractionate to the pellet. Therefore, we recommend a High Salt / Sonication Protocol when preparing nuclear extracts for Western blot.

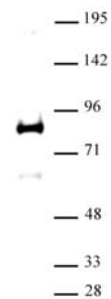
Storage and Guarantee: Some products may be shipped at room temperature. This will not affect their stability or performance. Avoid repeated freeze/thaw cycles by aliquoting items into single-use fractions for storage at -20°C for up to 2 years. Keep all reagents on ice when not in storage. This product is guaranteed for 12 months from date of receipt.

This product is for research use only and is not for use in diagnostic procedures.



XRCC1 antibody (pAb) tested by Immunofluorescence.

Formaldehyde fixed HeLa cells stained with XRCC1 antibody at a 1:2,000 dilution.



XRCC1 antibody (pAb) tested by Western blot.

XRCC1 detection by Western blot. The analysis was performed using 30 μ g HeLa nuclear cell extract and XRCC1 at a 1:500 dilution.