

## KDM1B / LSD2 antibody (pAb)

**Catalog Nos:** 61457, 61458

**RRID:** AB\_2793645

**Isotype:** IgG

**Application(s):** WB

**Reactivity:** Mouse

**Volumes:** 100 µl, 10 µl

**Purification:** Affinity Purified

**Host:** Rabbit

**Molecular Weight:** 93 kDa

**Background:** **KDM1B / LSD2** (Lysine (K)-Specific Demethylase 1B / Lysine-Specific Histone Demethylase 2) is a histone demethylase that demethylates 'Lys-4' of histone H3, a specific tag for epigenetic transcriptional activation, thereby acting as a corepressor. Required for de novo DNA methylation of a subset of imprinted genes during oogenesis. Demethylates both mono- and di-methylated 'Lys-4' of histone H3. Has no effect on tri-methylated 'Lys-4', mono-, di- or tri-methylated 'Lys-9', mono-, di- or tri-methylated 'Lys-27', mono-, di- or tri-methylated 'Lys-36' of histone H3, or on mono-, di- or tri-methylated 'Lys-20' of histone H4 (By similarity).

**Immunogen:** This antibody was raised against a peptide within the N-terminal region of mouse KDM1B / LSD2.

**Buffer:** Purified IgG in PBS with 30% glycerol and 0.035% sodium azide. Sodium azide is highly toxic.

### Application Notes:

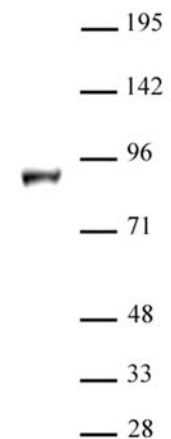
Applications Validated by Active Motif:

WB\*: 1:500 - 1:2,000 dilution

\*Note: many chromatin-bound proteins are not soluble in a low salt nuclear extract and fractionate to the pellet. Therefore, we recommend a High Salt / Sonication Protocol when preparing nuclear extracts for Western blot.

**Storage and Guarantee:** Some products may be shipped at room temperature. This will not affect their stability or performance. Avoid repeated freeze/thaw cycles by aliquoting items into single-use fractions for storage at -20°C for up to 2 years. Keep all reagents on ice when not in storage. This product is guaranteed for 12 months from date of receipt.

This product is for research use only and is not for use in diagnostic procedures.



### KDM1B / LSD2 antibody (pAb) tested by Western blot.

Nuclear extract of NIH3T3 cells (40 µg) probed with KDM1B / LSD2 antibody (pAb) at a dilution of 1:500.