

CENP-A phospho Ser18 antibody (pAb)

Catalog Nos: 61483, 61484

RRID: AB_2793655

Isotype: IgG

Application(s): DB, ICC, IF, WB

Reactivity: Human, Wide Range Predicted

Volumes: 100 µl, 10 µl

Purification: Affinity Purified

Host: Rabbit

Molecular Weight: 16 kDa

Background: CENP-A (Centromere Protein A) is a Histone H3-like variant which exclusively replaces conventional H3 in the nucleosome core of centromeric chromatin at the inner plate of the kinetochore. It is required for recruitment and assembly of kinetochore proteins, mitotic progression and chromosome segregation. Recently, phosphorylation of CENP-A on Ser16 and Ser18 was reported and found to be important for chromosome segregation during mitosis.

Immunogen: This antibody was raised against a synthetic peptide containing phosphorylated serine 16 and 18 of human CENP-A.

Buffer: Purified IgG in PBS with 30% glycerol and 0.035% sodium azide. Sodium azide is highly toxic.

Application Notes:

Applications Validated by Active Motif:

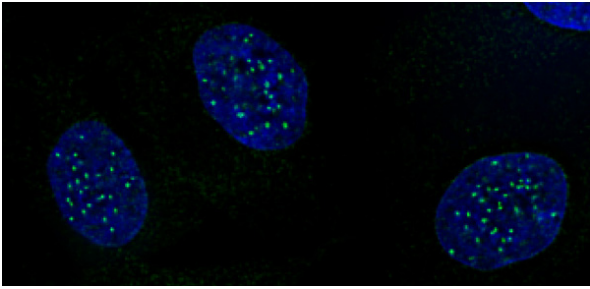
ICC/IF: 1:100 dilution

WB: 1:100 - 1:500 dilution

The addition of 0.05% Tween 20 in the blocking buffer and primary antibody incubation buffer is recommended to aid in detection by Western blot. Individual optimization may be required.

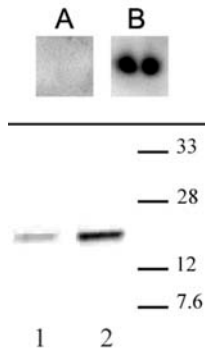
Storage and Guarantee: Some products may be shipped at room temperature. This will not affect their stability or performance. Avoid repeated freeze/thaw cycles by aliquoting items into single-use fractions for storage at -20°C for up to 2 years. Keep all reagents on ice when not in storage. This product is guaranteed for 12 months from date of receipt.

This product is for research use only and is not for use in diagnostic procedures.



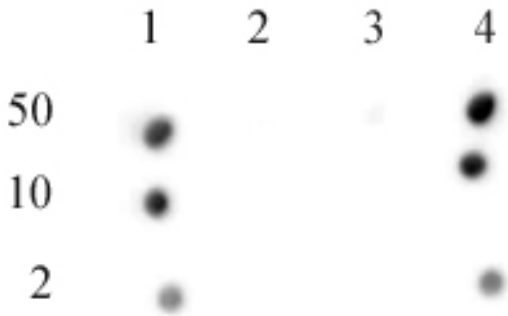
CENP-A phospho Ser18 antibody (pAb) tested by immunofluorescence.

Detection of CENP-A phospho Ser18 by immunofluorescence. HeLa cells were stained with CENP-A phospho Ser18 antibody at a 1:100 dilution.
 Green: CENP-A phospho Ser18 antibody (pAb)
 Blue: DAPI



CENP-A phospho Ser18 antibody (pAb) tested by Western blot.

Top: Recombinant CENP-A (20 ng) was probed with CENP-A phospho Ser18 antibody (1:100 dilution) (A) or with anti-centromere antibody (ACA) (B). CENP-A phospho Ser18 antibody does not detect recombinant CENP-A.
 Bottom: HeLa nuclear extract (20 µg) was probed with CENP-A phospho Ser18 antibody (1:250 dilution). Lane 1: CENP-A phospho-Ser18 antibody. Lane 2: anti-centromere antibody (ACA).



CENP-A phospho Ser18 antibody (pAb) tested by dot blot analysis.

Dot blot analysis was used to confirm the specificity of CENP-A phospho Ser18 antibody. Peptides corresponding to the immunogen and related proteins were spotted onto PVDF and probed with the antibody at 1:750. The amount of peptide (picomoles) spotted is indicated next to each row.
 Lane 1: CENP-A phospho Ser 16 and phospho Ser18.
 Lane 2: CENP-A unmodified.
 Lane 3: CENP-A phospho Ser 16.
 Lane 4: CENP-A phospho Ser 18.