

WDR5 antibody (pAb)

Catalog Nos: 61485, 61486**RRID:** AB_2687511**Isotype:** IgG**Application(s):** ChIP, WB**Reactivity:** Human**Volumes:** 100 µl, 10 µl**Purification:** Affinity Purified**Host:** Rabbit**Molecular Weight:** 40 kDa

Background: WDR5 (WD repeat-containing protein 5) is a component of the Set1 histone methyltransferase / MLL1/MLL complex that is involved in methylation and dimethylation of 'Lys-4' of Histone H3. H3K4 methylation represents a specific tag for epigenetic transcriptional activation. WDR5 is also a component of the NSL complex and it may be involved in acetylation of nucleosomal histone H4 on several lysine residues. WDR5 is also core component of other methyltransferase-containing complexes including MLL2/3 (also named ASCOM complex) and MLL4/WBP7.

Immunogen: This antibody was raised against a peptide within the C-terminal region of human WDR5.

Buffer: Purified IgG in PBS with 30% glycerol and 0.035% sodium azide. Sodium azide is highly toxic.

Application Notes:

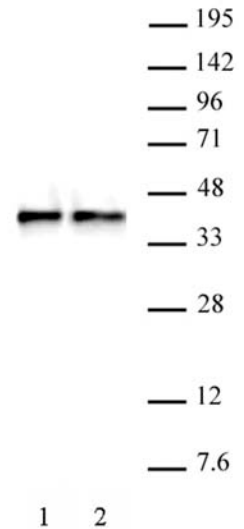
Applications Validated by Active Motif:

WB*: 1:500 - 1:2,000 dilution

*Note: many chromatin-bound proteins are not soluble in a low salt nuclear extract and fractionate to the pellet. Therefore, we recommend a High Salt / Sonication Protocol when preparing nuclear extracts for Western Blot.

Storage and Guarantee: Some products may be shipped at room temperature. This will not affect their stability or performance. Avoid repeated freeze/thaw cycles by aliquoting items into single-use fractions for storage at -20°C for up to 2 years. Keep all reagents on ice when not in storage. This product is guaranteed for 12 months from date of receipt.

This product is for research use only and is not for use in diagnostic procedures.

**WDR5 antibody (pAb) tested by Western blot.**

Nuclear extract (30 µg) of Raji (Lane 1) and HeLa cells (Lane 2) probed with WDR5 antibody (pAb) at a 1:500 dilution.