

ATF1 antibody (pAb)

Catalog Nos: 61563, 61564

RRID: AB_2614964

Isotype: IgG

Application(s): WB

Reactivity: Human

Volumes: 100 μ l, 10 μ l

Purification: Affinity Purified

Host: Rabbit

Molecular Weight: 40 kDa

Background: ATF1 (Activating Transcription Factor 1) binds the cAMP response element (CRE) (consensus: 5'-GTGACGT[AC][AG]-3'), a sequence present in many viral and cellular promoters. Binds to the Tax-responsive element (TRE) of HTLV-I. Mediates PKA-induced stimulation of CRE-reporter genes. Represses the expression of FTH1 and other antioxidant detoxification genes. Triggers cell proliferation and transformation.

Immunogen: This antibody was raised against a peptide within the C-terminal region of human ATF1.

Buffer: Purified IgG in PBS with 30% glycerol and 0.035% sodium azide. Sodium azide is highly toxic.

Application Notes:

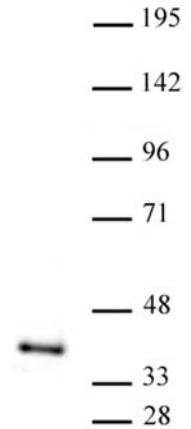
Applications Validated by Active Motif:

WB*: 1:500 - 1:1,000 dilution

*Note: many chromatin-bound proteins are not soluble in a low salt nuclear extract and fractionate to the pellet. Therefore, we recommend a High Salt / Sonication Protocol when preparing nuclear extracts for Western blot.

Storage and Guarantee: Some products may be shipped at room temperature. This will not affect their stability or performance. Avoid repeated freeze/thaw cycles by aliquoting items into single-use fractions for storage at -20°C for up to 2 years. Keep all reagents on ice when not in storage. This product is guaranteed for 12 months from date of receipt.

This product is for research use only and is not for use in diagnostic procedures.



ATF1 antibody (pAb) tested by Western blot.

Nuclear extract of HeLa cells (30 μ g) probed with ATF1 antibody (pAb) at a dilution of 1:500.