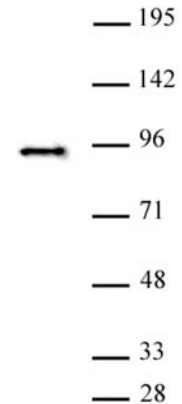


SATB2 antibody (pAb)

Catalog Nos: 61575, 61576**RRID:** AB_2793683**Isotype:** IgG**Application(s):** WB**Reactivity:** Human**Volumes:** 100 µl, 10 µl**Purification:** Affinity Purified**Host:** Rabbit**Molecular Weight:** 90 kDa

Background: **SATB2** (SATB homeobox 2; Special AT-Rich Sequence-Binding Protein 2) binds to DNA, at nuclear matrix- or scaffold-associated regions. Thought to recognize the sugar-phosphate structure of double-stranded DNA. Transcription factor controlling nuclear gene expression, by binding to matrix attachment regions (MARs) of DNA and inducing a local chromatin-loop remodeling. Acts as a docking site for several chromatin remodeling enzymes and also by recruiting corepressors (HDACs) or coactivators (HATs) directly to promoters and enhancers. Required for the initiation of the upper-layer neurons (UL1) specific genetic program and for the inactivation of deep-layer neurons (DL) and UL2 specific genes, probably by modulating BCL11B expression. Repressor of Ctip2 and regulatory determinant of corticocortical connections in the developing cerebral cortex. May play an important role in palate formation. Acts as a molecular node in a transcriptional network regulating skeletal development and osteoblast differentiation.



Immunogen: This antibody was raised against a peptide within the C-terminal region of human SATB2.

Buffer: Purified IgG in PBS with 30% glycerol and 0.035% sodium azide. Sodium azide is highly toxic.

Application Notes:

Applications Validated by Active Motif:

WB: 1:500 - 1:2,000 dilution

The addition of 0.05% Tween 20 in the blocking buffer and primary antibody incubation buffer is recommended to aid in detection by Western blot. Individual optimization may be required.

Storage and Guarantee: Some products may be shipped at room temperature. This will not affect their stability or performance. Avoid repeated freeze/thaw cycles by aliquoting items into single-use fractions for storage at -20°C for up to 2 years. Keep all reagents on ice when not in storage. This product is guaranteed for 12 months from date of receipt.

This product is for research use only and is not for use in diagnostic procedures.

SATB2 antibody (pAb) tested by Western blot.

SATB2 antibody detection by Western blot. The analysis was performed using 20 µg Saos-2 nuclear extract and SATB2 antibody at a 1:500 dilution.