

AbFlex® MEIS 1/2/3 antibody (rAb)

Catalog Nos: 91259, 91260**RRID:** AB_2793823**Isotype:** IgG2a**Application(s):** WB**Reactivity:** Human, Mouse**Quantities:** 100 µg, 10 µg**Purification:** Protein A Chromatography**Host:** Mouse**Concentration:** 1 µg/µl**Molecular Weight:** 54 - 66 kDa

Background: AbFlex® antibodies are recombinant antibodies (rAbs) that have been generated using defined DNA sequences to produce highly specific, reproducible antibodies. Each AbFlex antibody contains a 6xHis Tag, a Biotinylation Tag for enzymatic biotin conjugation using the biotin ligase, BirA, and a sortase recognition motif (LPXTG) to attach a variety of labels directly to the antibody including fluorophores, enzymatic substrates (HRP, AP), peptides, drugs as well as solid supports. AbFlex® MEIS 1/2/3 antibody was expressed as full-length IgG with mouse immunoglobulin heavy and light chains (IgG2a isotype) in mammalian 293 cells. This antibody recognizes all isoforms of MEIS1, as determined by Western blot.

The MEIS family of proteins (Myeloid Ectopic viral Integration Site homologues) encode proteins that function as cofactors for the Homeobox (HOX) proteins. Homeobox genes play a crucial role in normal development. In addition, several homeoproteins are involved in neoplasia. MEIS and a functionally related protein Pbx belong to the TALE (Three Amino acid Loop Extension) homeodomain superfamily of proteins. The role of MEIS proteins in the regulation of transcription is as yet unclear.

Immunogen: This antibody was raised against recombinant protein comprising amino acids 59-390 of mouse MEIS1.

Buffer: Purified IgG in 140 mM HEPES, pH 7.5, 70 mM NaCl, 32 mM NaOAc, 0.035% sodium azide, 30% glycerol. Sodium azide is highly toxic.

Application Notes:

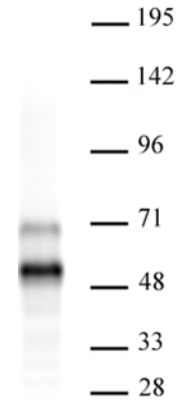
Applications Validated by Active Motif:

WB: 0.5 - 2 µg/ml dilution

Note: For optimal results, we recommend the addition of 0.1% Tween 20 to all blocking solutions to reduce background. Individual optimization may be required.

AbFlex® recombinant antibodies are genetically derived from DNA sequences of parental hybridoma clones. For details on the parental clone, see Catalog No. 39795.

Storage and Guarantee: Some products may be shipped at room temperature. This will not affect their stability or performance. Avoid repeated freeze/thaw cycles by aliquoting items into single-use fractions for storage at -20°C for up to 2 years. Keep all reagents on ice when not in storage. This product is guaranteed for 12



AbFlex® MEIS 1/2/3 antibody (rAb) tested by Western blot. 25 µg of SY-SY5Y human neuroblast cell extract was run on SDS-PAGE and probed with AbFlex MEIS 1/2/3 antibody at 2 µg/ml. The antibody recognizes all isoforms of MEIS1.