

AbFlex® Mi-2 beta (CHD4) antibody (rAb)

Catalog Nos: 91275, 91276**RRID:** AB_2793830**Isotype:** IgG2a**Application(s):** WB**Reactivity:** Human**Quantities:** 100 µg, 10 µg**Purification:** Protein A Chromatography**Host:** Mouse**Concentration:** 1 µg/µl**Molecular Weight:** 240 kDa

Background: AbFlex® antibodies are recombinant antibodies (rAbs) that have been generated using defined DNA sequences to produce highly specific, reproducible antibodies. Each AbFlex antibody contains a 6xHis Tag, a Biotinylation Tag for enzymatic biotin conjugation using the biotin ligase, BirA, and a sortase recognition motif (LPXTG) to attach a variety of labels directly to the antibody including fluorophores, enzymatic substrates (HRP, AP), peptides, drugs as well as solid supports. AbFlex Mi-2 beta (CHD4) antibody was expressed as full-length IgG with mouse immunoglobulin heavy and light chains (IgG2a isotype) in mammalian 293 cells.

Mi-2β (Mi-2 beta, CHD4, chromodomain helicase DNA-binding protein 4) represents the major Mi-2 isoform present in the complex Mi-2/NuRD. This complex is a multi-subunit protein complex containing both histone deacetylase and nucleosome-dependent ATPase subunits. Current models predict that this complex functions primarily in transcriptional repression. In addition to the ATPase domain, Mi-2 beta contains a chromodomain and two PHD domains. Mi-2 beta interacts with BRG-1, a component of the SWI/SNF complex, and the RET finger protein (RFP).

Immunogen: This antibody was raised against a synthetic peptide derived from human Mi-2 beta.

Buffer: Purified IgG in 140 mM Hepes, pH 7.5, 70 mM NaCl, 32 mM NaOAc, 0.035% sodium azide, 30% glycerol. Sodium azide is highly toxic.

Application Notes:

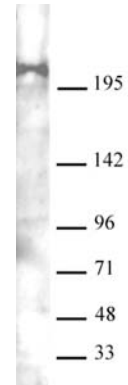
Applications Validated by Active Motif:

WB: 0.5 - 2 µg/ml.

AbFlex® recombinant antibodies are genetically derived from DNA sequences of parental hybridoma clones. For details on the parental clone, see Catalog No. 39695.

Storage and Guarantee: Some products may be shipped at room temperature. This will not affect their stability or performance. Avoid repeated freeze/thaw cycles by aliquoting items into single-use fractions for storage at -20°C for up to 2 years. Keep all reagents on ice when not in storage. This product is guaranteed for 12 months from date of receipt.

This product is for research use only and is not for use in diagnostic procedures.



AbFlex® Mi-2 beta (CHD4) antibody (rAb) tested by Western blot 20 µg of Jurkat cell nuclear extract was run on SDS-PAGE and probed with AbFlex Mi-2 beta (CHD4) antibody at 0.5 µg/ml.