

# Antibodies for the Study of Nuclear Function

Transcription Factor and  
Cell Signaling Antibodies

Antibodies to Chromatin Modifiers

Histone & Histone Modification  
Antibodies

ChIP-validated Antibodies

Secondary Antibodies

ACTIVE  MOTIF®

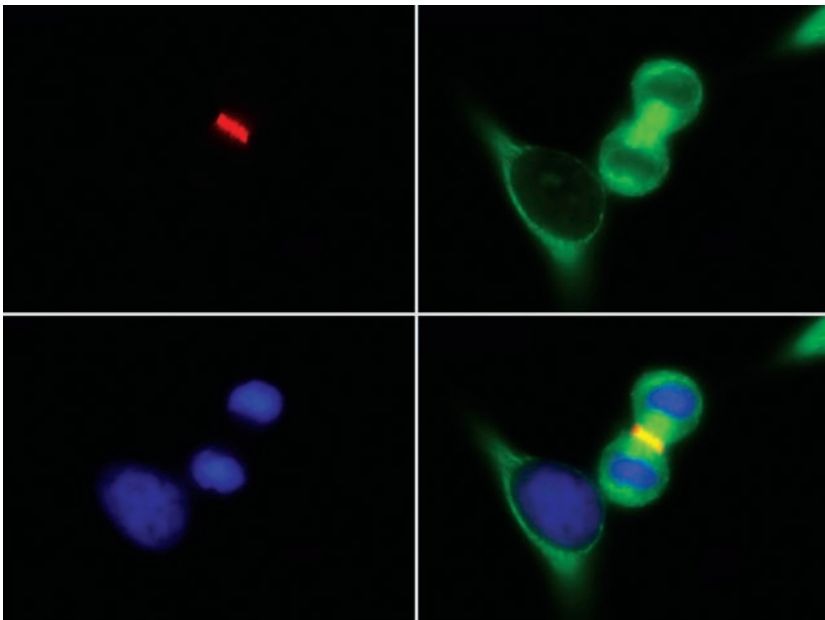
Tools to Analyze  
Nuclear Function

# Antibodies for the Study of the Nucleus.

**Active Motif is committed** to providing the highest quality antibodies for studying chromatin and the biology of the nucleus. We specialize in manufacturing antibodies against histones, histone modifications and chromatin proteins, many of which have been validated for use in chromatin IP (ChIP) and immunofluorescence (IF). Each antibody

that we make is rigorously tested to ensure you won't waste your precious time and research dollars on antibodies that don't perform as specified.

At Active Motif, we believe that you should always repeat your experiments, but not because your reagents failed.



**FIGURE 1:**

**Immunofluorescence with Active Motif antibodies.**

HeLa cells stained with Aurora B antibody (1:200 dilution). One of the cells is undergoing mitosis and is in anaphase, at which point Aurora B (red) can be visualized in the spindle midzone. Top Left: Aurora B pAb (Cat. No. 39261). Top Right: alpha Tubulin mAb (Cat. No. 39527). Bottom Left: DAPI nuclear stain. Bottom Right: all 3 images merged.

## OUR ANTIBODY COMMITMENT

### Quality First

We'd rather fail our project than sacrifice quality.

### Highly Characterized

All of our antibodies are stringently tested under multiple conditions.

### Controlled Process

We manufacture and test our own antibodies, rather than re-selling.

### Consistent

We go to great lengths to minimize lot-to-lot variability.



# Extensive selection. Smart design.

## Histones and Histone Modification Antibodies

Because histone post-translational modifications are important regulators of genome function, Active Motif is developing antibodies for all widely studied, biologically relevant modification sites. Each antibody is rigorously screened for specificity and tested to verify the applications it works well in, such as ChIP, Westerns & IF.

Complete details: [www.activemotif.com/histoneabs](http://www.activemotif.com/histoneabs)

## Transcription Factor & Cell Signaling Antibodies

To complement our assays for studying the activation of important signaling pathways, Active Motif offers a wide variety of antibodies to transcription factors and cell signaling proteins. As with our other antibodies, these are characterized for specificity and application tested.

Complete details: [www.activemotif.com/tfabs](http://www.activemotif.com/tfabs)

## ChIP-validated Antibodies

Chromatin immunoprecipitation is an extremely challenging technique, so only antibodies of the highest quality will do. For an antibody to work in chromatin IP, it must be of high titer and it must be very specific, with no detection of non-target proteins. Most importantly, it must be able to recognize the target protein in its native chromatin-associated context after fixation.

Complete details: [www.activemotif.com/chipabs](http://www.activemotif.com/chipabs)

## Antibodies to Chromatin Modifiers

There are many important non-histone chromatin proteins, from histone modifying enzymes like acetyltransferases, deacetylases and methyltransferases to chromatin-binding proteins like HPI, which read the "histone code". Because these proteins regulate chromatin structure and function, Active Motif offers high-quality antibodies to these targets so you can study their roles.

Complete details: [www.activemotif.com/chromabs](http://www.activemotif.com/chromabs)

## Fluorescent and HRP Secondary Antibodies

To get the most from your use of our primaries, Active Motif offers high-quality secondary antibodies conjugated to a wide variety of fluorescent dyes and to HRP.

Complete details: [www.activemotif.com/secondary](http://www.activemotif.com/secondary)

## ANTIBODY DEVELOPMENT PROCESS

At Active Motif, antibody development and testing is a very important and tightly controlled process, with many steps along the way. From the design of the immunogen to the specificity screening and technique validation, our years of expertise in antibody development ensure that only the highest quality antibodies are offered for use in your research.

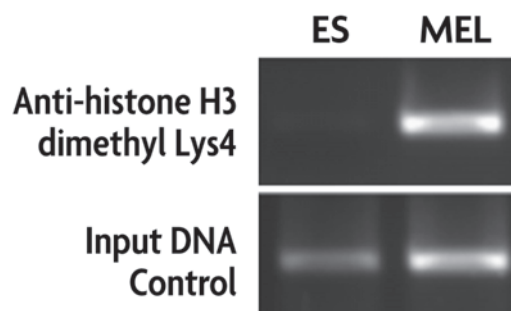


FIGURE 2:

### Chromatin immunoprecipitation of methylated histone H3.

ChIP was performed with Histone H3K4me2 pAb (Cat. No. 39141) using chromatin prepared from mouse embryonic stem cells (left lane) or mouse erythroleukemia cells (right lane). PCR primers specific for the  $\beta$ -globin gene were used to amplify a 210 base pair region of the promoter following isolation of DNA.

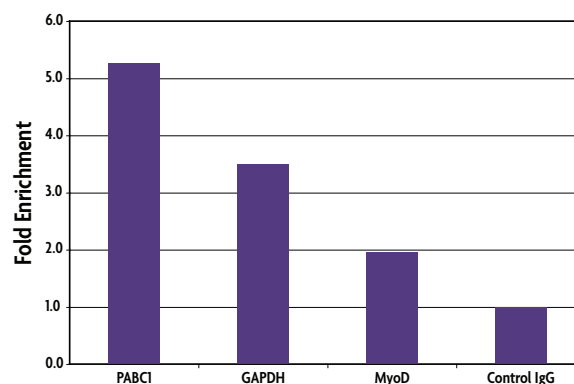


FIGURE 3:

### Histone H3 acetyl Lys14 pAb used in ChIP and analyzed by RT-qPCR.

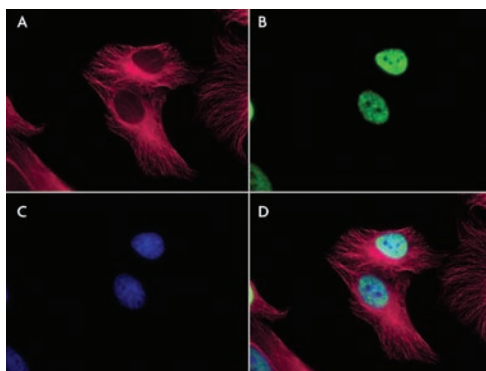
Chromatin IP was performed with the ChIP-IT™ Express Kit (Cat. No. 53008) and Ready-to-ChIP HeLa Chromatin (Cat. No. 53015) using 5  $\mu$ g of Histone H3K14ac pAb (Cat. No. 39697) or rabbit IgG as a negative control. Real time, quantitative PCR (RT-qPCR) was then performed using primer pairs specific for the indicated genes. Data are presented as Fold Enrichment of the ChIP antibody signal versus that of the negative control using the ddCT method.

For a list of all antibodies offered by Active Motif, please visit us at [www.activemotif.com/abs](http://www.activemotif.com/abs)

# Rigorous testing ensures performance.

## Immunogen selection

Immunogens are selected to decrease the likelihood of cross-reactivity with related proteins and to maximize detection of the protein in its native context. Immunogens for modification-specific antibodies are selected to ensure that the antibody recognizes the modified version of the protein only.



## Technique validation

Each antibody is validated for use in techniques such as ChIP (Figures 2 & 3) and IF (Figures 1, 4 & 8) so you can be confident when using them in your experiments.

FIGURE 4:

### Immunofluorescence testing.

HeLa cells stained with alpha Tubulin mAb in red (Cat. No. 39527, panels A and D), Histone H4 monomethyl Lys20 pAb in green (Cat. No. 39175, panels B and D) and DAPI nuclear stain in blue (panels C and D). Note the strong nuclear staining and absence of cytoplasmic staining in panel B, which is to be expected of an antibody to a histone modification.

## Specificity screening

The first test performed on every antibody is dot blot analysis, which ensures its specificity for the desired protein or modification (Figure 5). Antibodies that do not exhibit a greater than 25-fold selectivity for the desired modification are failed.

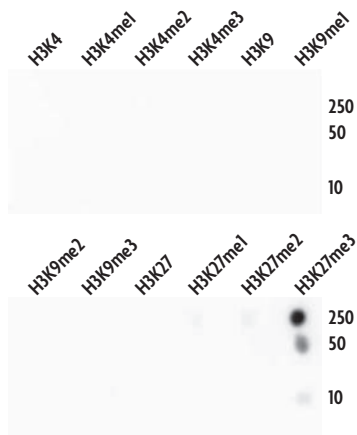


FIGURE 5:

### Dot blot analysis confirms specificity.

Ten, 50 and 250 picomole aliquots of synthetic peptides corresponding to histone H3 that is unmodified, mono-, di- or trimethylated at Lys4 (Lanes 1-4), Lys9 (Lanes 5-8) or Lys27 (Lanes 9-12) were spotted and probed with Histone H3K27me3 pAb (Cat. No. 39155), confirming the antibody's specificity for histone H3 trimethyl Lys27 (Lane 12). No cross-reactivity is observed for the unmodified Lys27 peptide (Lane 9) and only a hint of signal is observed at the 250 picomole spots for mono- (Lane 10) and dimethyl Lys27 (Lane 11).

## Western blot

Western blotting is performed to verify the antibody recognizes the correct molecular weight protein and does not cross-react with other proteins. Commonly used chemical treatments that stimulate a modification (e.g. HDAC inhibitors and acetylation) are used to better detect the modification (Figure 6).

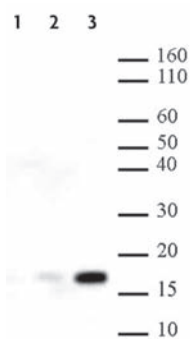


FIGURE 6:

### Western blot confirming size and modification.

Histone H2BK120ac pAb (Cat. No. 39119) was tested by Western blot. No reactivity is observed on recombinant human histone H2B (Lane 1, 200 ng protein), as it is not acetylated. Lanes 2 and 3 contain 5 µg each of HeLa cell acid extract. Cells that were treated with a histone deacetylase inhibitor (sodium butyrate) prior to extraction have an increased signal (Lane 3), which is to be expected for an antibody to a site of acetylation.

## Additional specificity testing

Antibodies to histone modifications that exist in budding yeast (*S. cerevisiae*) can be further screened for specificity by testing strains of yeast that contain a point mutation at the position of the modified amino acid (Figure 7).

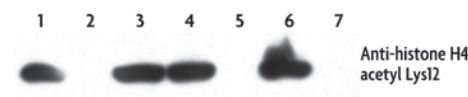


FIGURE 7:

### Mutational analysis of yeast modifications.

Histone H4K12ac pAb (Cat. No. 39165) was tested by Western blot using extracts from wild-type yeast or yeast containing a mutated histone H4 gene.

- Lane 1: Yeast with wild-type histone H4.
- Lane 2: H4 with the amino-terminal tail deleted.
- Lane 3: H4 with an arginine instead of lysine 5.
- Lane 4: H4 with an arginine instead of lysine 8.
- Lane 5: H4 with an arginine instead of lysine 12.
- Lane 6: H4 with an arginine instead of lysine 16.
- Lane 7: H4 with arginines instead of lysines 5, 8 & 12.

Note the absence of reactivity in yeast extracts in which lysine 12 is either missing or mutated (Lanes 2, 5 & 7).

For a list of all antibodies offered by Active Motif, please visit us at [www.activemotif.com/abs](http://www.activemotif.com/abs)



# High-quality Secondary Antibody Conjugates.

## Improved primary detection

To provide you with a variety of choices for detecting your primary antibodies, Active Motif offers a variety of anti-mouse & anti-rabbit secondary antibodies that have been conjugated to a broad line of high-quality fluorescent molecules (Table 1), as well as HRP.

## Verified for a variety of applications

Active Motif's secondary conjugates are ideal for use in various applications including fluorescent microscopy and flow cytometry, where they have been shown to work with high efficiency and specificity under multiple fixation conditions. Of note, due to a very large Stokes shift of 134 nm (Figure 9), our red Chromeo™ 494 conjugates are ideal for multiplexing with 488-excitable, green fluorescent dyes (Figure 8). And, our Chromeo 488, ATTO 647N and ATTO 655 conjugates are certified and recommended by Leica Microsystems for use with its powerful STED (STimulated Emission Depletion) microscopes.

## Optimized conjugation method

Next to the spectral properties of the dye and the quality of the secondary antibody, the quality of a fluorescent conjugate is influenced by the dye-to protein ratio, the conjugation method and its purity. All Active Motif Secondary Antibody Conjugates have been prepared by an optimized conjugation protocol that makes the fluorescence brighter while lowering the background, ensuring that you get the best results possible.

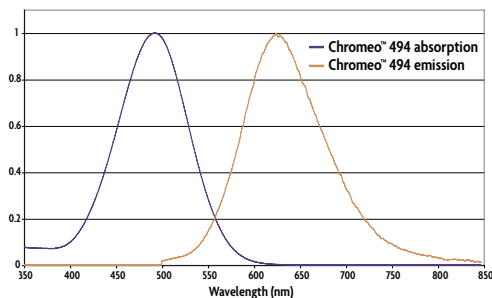


FIGURE 9:

### Absorption and emission spectra of Chromeo 494.

The very large Stokes shift of Chromeo 494 (134 nm) makes it an ideal partner for multiplexing because while it is excited by the same sources used for fluorescein, FITC, Chromeo 488 and other 488 nm-excitable dyes, its red emission is separated completely from the green fluorescence emitted by these other 488-excitable dyes

Dye	Absorption	Emission	$\epsilon$ L/(mol-cm)	Stokes Shift
Chromeo™ 488	498 nm	524 nm	73,000	26 nm
Chromeo™ 494	489 nm	624 nm	55,000	135 nm
Chromeo™ 505	514 nm	530 nm	70,000	16 nm
Chromeo™ 546	550 nm	567 nm	98,800	17 nm
Chromeo™ 642	647 nm	666 nm	180,000	19 nm
ATTO 532 (GSD)	534 nm	560 nm	115,000	26 nm
ATTO 594	601 nm	627 nm	120,000	26 nm
ATTO 647N (STED/GSD)	644 nm	669 nm	150,000	25 nm
ATTO 655 (STED)	663 nm	684 nm	125,000	21 nm
Rhodamine 6G (GSD)	508 nm	558 nm	116,000	50 nm

TABLE 1:

Properties of Active Motif's fluorescent conjugated secondary antibodies.

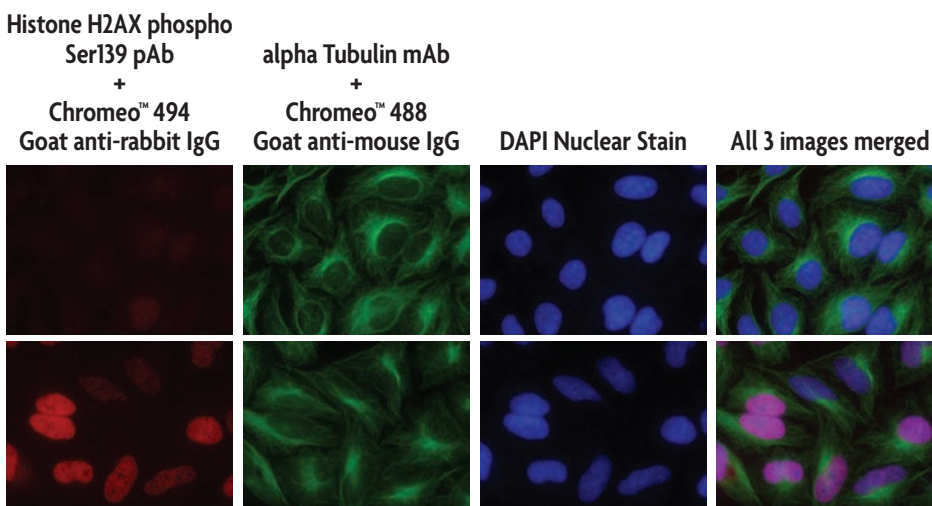


FIGURE 8:

### Concurrent staining using Chromeo 488 and Chromeo 494 secondary antibody conjugates in untreated and etoposide-treated HeLa cells.

HeLa cells were either left untreated (row 1), or treated with 100  $\mu$ M etoposide for 6 hours (row 2), prior to fixation with methanol. The histone variant H2AX was then stained with Histone H2AX phospho Ser139 rabbit pAb (Cat. No. 39117) and Chromeo 494 goat anti-rabbit IgG (Cat. No. 15042), while tubulin was visualized using alpha Tubulin mouse mAb (Cat. No. 39527) and Chromeo 488 goat anti-mouse IgG (Cat. No. 15031). The nuclei were stained using DAPI nuclear stain, and the three separate images were then merged.



Tools to Analyze  
Nuclear Function

## Active Motif Antibodies (as of January 13, 2014)

For an up-to-date list of all available antibodies and for more comprehensive information on each antibody, including data, images and downloadable Technical Data Sheets, please visit our website at [www.activemotif.com/abs](http://www.activemotif.com/abs). Or, if you click any antibody name in the table below, you will be linked directly to its page on our website. To see our Fluorescent and HRP Secondary Antibody Conjugates, please go to the last pages of this antibody list or visit [www.activemotif.com/secondary](http://www.activemotif.com/secondary).

Antibody	Immunogen	Reactivity	Applications	Format	Catalog No.
3-Methylcytosine (3-mC) antibody (pAb)	Raised against 3-methylcytidine conjugated to KLH. (Rabbit serum)	H, M, WR	DB	100 µl	61179
				10 µl	61180
3-Methylcytosine (3-mC) antibody (pAb)	Raised against 3-methylcytidine conjugated to KLH. (Purified rabbit IgG)	H, M, WR	DB	100 µg	61111
				10 µg	61112
5-Carboxylcytosine (5-caC) antibody (pAb)	Raised against 5-carboxylcytidine conjugated to KLH. (Rabbit serum)	NS	DB, IF	100 µl	61225
				10 µl	61226
5-Carboxylcytosine (5-caC) antibody (pAb)	Raised against 5-carboxylcytidine conjugated to KLH. (Purified rabbit IgG)	NS	DB	100 µg	61229
				10 µg	61230
5-Formylcytosine (5-fC) antibody (pAb)	Raised against 5-formylcytidine conjugated to KLH. (Rabbit serum)	NS	DB, IF	100 µl	61223
				10 µl	61224
5-Formylcytosine (5-fC) antibody (pAb)	Raised against 5-formylcytidine conjugated to KLH. (Purified rabbit IgG)	NS	DB	100 µg	61227
				10 µg	61228
5-Hydroxymethylcytosine (5-hmC) antibody (mAb) (Clone 591)	Raised against 5-Hydroxymethylcytidine conjugated to KLH. (Purified mouse IgG)	H, M, WR	DB, MeDIP	100 µg	39999
				10 µg	40000
5-Hydroxymethylcytosine (5-hmC) antibody (pAb)	Raised against 5-Hydroxymethylcytidine conjugated to KLH. (Rabbit serum)	H, M, WR	DB, IF, IHC, MeDIP	100 µl	39769
				10 µl	39770
5-Hydroxymethylcytosine (5-hmC) antibody (pAb)	Raised against 5-Hydroxymethylcytidine conjugated to KLH. (Purified rabbit IgG)	H, M, WR	DB, MeDIP	100 µg	39791
				10 µg	39792
5-Methylcytosine (5-mC) antibody (mAb) (Clone 33D3)	Recognizes the modified 5-methylcytidine base in plant and vertebrate DNA. (Purified mouse IgG)	NS	DB, FC, IHC, IP, MeDIP	50 µg	39649
5-Methylcytosine (5-mC) antibody (pAb)	Raised against 5-methylcytidine conjugated to KLH. (Purified rabbit IgG)	NS	DB, IP, MeDIP	100 µg	61255
				10 µg	61256
<b>NEW</b> 5-Methylcytosine (5-mC) antibody (mAb) (Clone A1)	Raised against 5-methylcytidine conjugated to KLH. (Purified mouse IgG)	NS	DB, MeDIP	100 µg	61479
				10 µg	61480
<b>NEW</b> 6-Methyladenosine (6-meA) antibody (pAb)	Raised against 6-methyladenosine conjugated to KLH. (Purified rabbit IgG)	NS	DB	100 µg	61495
				10 µg	61496
Bridging Antibody for Mouse IgG	Raised against purified mouse IgG.	M	ChIP, IP	500 µg	53017
A20 antibody (mAb) (Clone 59A426)	Raised against full-length human A20.	H	IP, WB	100 µg	40901
Acfl antibody (pAb)	Raised against the recombinant, C-terminal half of <i>Drosophila</i> Acfl.	Dr	IF, IP, WB	100 µl	39721
				10 µl	39722

**Reactivity:** B = Bovine; BY = Budding Yeast; Ce = *C. elegans*; Dr = *Drosophila*; FY = Fission Yeast; Hm = Hamster; H = Human; Mk = Monkey; M = Mouse; NS = Not Species Specific; Rb = Rabbit; R = Rat; WR = Wide range predicted

**Appl.:** ChIP = Chromatin IP; ChCh = ChIP-chip; ChSeq = ChIP-Seq; DB = Dot Blot; FC = Flow Cytometry; ICC = Immunocytochemistry; IF = Immunofluorescence; IHC = Immunohistochemistry; IP = Immunoprecipitation; MeDIP = Methyl-DNA IP; WB = Western Blot

Antibody	Immunogen	Reactivity	Applications	Format	Catalog No.
Ago1/2/3 antibody (mAb) (Clone 2A8)	Raised against a recombinant protein with amino acids 47-879 of human Ago2.	H	ChIP, IF, IHC, IP, WB	100 µg 10 µg	39937 39938
Ago1 antibody (mAb) (Clone 4B8)	Raised against a peptide containing the N-terminal region of human Ago1.	H	IP, WB	100 µg 10 µg	61071 61072
Ago2 antibody (mAb) (Clone 1B1-E2H5)	Raised against a recombinant protein with amino acids 1-148 of human Ago2.	H	IF, IP, WB	100 µg 10 µg	39853 39854
Ago3 antibody (mAb) (Clone 4B1-F6)	Raised against a recombinant protein with amino acids 1-175 of human Ago3.	H	IF, IP	100 µg 10 µg	39787 39788
Ago4 antibody (mAb) (Clone 1B7-G11)	Raised against a recombinant protein with amino acids 1-164 of human Ago4.	H	IP, WB	100 µg 10 µg	39855 39856
Ago4 antibody (pAb)	Raised against a peptide containing the N-terminal region of human Ago4.	H	WB	100 µl 10 µl	39813 39814
AIB1 / SRC-3 antibody (pAb)	Raised against a peptide derived from human AIB1 / SRC-3.	H	ChIP, WB	100 µl 10 µl	39797 39798
AIB3 antibody (pAb)	Raised against a recombinant protein with amino acids 2-146 of human AIB3.	H, M	IHC, IP, WB	100 µl 10 µl	39835 39836
AID antibody (mAb) (Clone 328.8b)	Raised against amino acids 178-198 of human AID.	H, M	IF, IP, WB	100 µg 10 µg	39885 39886
Aiolos antibody (pAb)	Raised against a GST-tagged, C-terminal half of mouse Aiolos.	M	IF, IP, WB	200 µl 10 µl	39293 39294
Aiolos antibody (mAb) (Clone 8B2)	Raised against the N-terminal half of mouse Aiolos.	M	ChIP, WB	100 µg 10 µg	39657 39658
AIRE antibody (pAb)	Raised against a peptide to the C-terminal region of human AIRE.	H	WB	100 µl 10 µl	61139 61140
AKT1 phospho Ser473 antibody (mAb) (Clone 104A282)	Raised against a peptide with phospho-serine 473 of human AKT1.	H, M	WB	100 µg	40902
alpha Tubulin antibody (mAb) (Clone 5-B-1-2)	Raised against total protein purified from sea urchin sperm axonemes.	H, M, WR	IF, WB	200 µl 10 µl	39527 39528
AML-1/Runx1 antibody (pAb)	Raised against amino acids 231-245 of human AML-1/Runx1.	H, M	WB	100 µl	39000
AML-2/Runx3 antibody (pAb)	Raised against full-length human AML-2/Runx3.	H	EMSA, WB	100 µl	39301
AML-3/Runx2 antibody (pAb)	Raised against amino acids 333-348 of human AML-3/Runx2.	H	EMSA	100 µl	39302
Androgen Receptor antibody (pAb)	Raised against a peptide of the N-terminal region of human Androgen Receptor.	H, M	ChIP, ChCh, ChSeq, IP, WB	100 µl 10 µl	39781 39782
AP-2 antibody (pAb)	Raised against amino acids 120-134 of human AP-2.	H	WB	100 µg	39001
APE antibody (pAb)	Peptide mixture of amino acids 36-52 and 216-232 of human APE.	H	WB	100 µg	39200
APEXL2 antibody (pAb)	Raised against a peptide corresponding to human APEXL2.	H	WB	200 µl	39201

**Reactivity:** B = Bovine; BY = Budding Yeast; Ce = *C. elegans*; Dr = *Drosophila*; FY = Fission Yeast; Hm = Hamster; H = Human; Mk = Monkey; M = Mouse; NS = Not Species Specific; Rb = Rabbit; R = Rat; WR = Wide range predicted  
**Appl.:** ChIP = Chromatin IP; ChCh = ChIP-chip; ChSeq = ChIP-Seq; DB = Dot Blot; FC = Flow Cytometry; ICC = Immunocytochemistry; IF = Immunofluorescence; IHC = Immunohistochemistry; IP = Immunoprecipitation; MeDIP = Methyl-DNA IP; WB = Western Blot

Antibody	Immunogen	Reactivity	Applications	Format	Catalog No.
APOBEC2 antibody (pAb)	Raised against a peptide of the N-terminal region of human APOBEC2.	H	WB	100 µl 10 µl	39985 39986
Dimethyl-Arginine, asymmetric antibody (pAb)	Raised against a peptide with dimethyl-arginine (asymmetric).	NS	IF, WB	200 µl 10 µl	39231 39232
ASH2L antibody (pAb)	Raised against full-length recombinant human ASH2 protein.	H, WR	IF, IP, WB	200 µl 10 µl	39099 39100
ASH2L antibody (mAb) (Clone 4C5)	Raised against a recombinant protein containing the N-terminal region of human ASH2L.	H	IHC, WB	100 µg 10 µg	61359 61360
ASPM / MCPH5 antibody (pAb)	Raised against a peptide to the C-terminal region of human ASPM / MCPH5.	H	IF	100 µg 10 µg	61205 61206
ATAD2 antibody (pAb)	Raised against a peptide to the C-terminal region of human ATAD2.	H	WB	100 µl 10 µl	61369 61370
ATF-2 antibody (pAb)	Raised against amino acids 13-27 of human ATF-2.	H	WB	100 µg	40977
ATF-2 phospho Thr71 antibody (mAb) (Clone 103C411)	Raised against a peptide with phospho-threonine 71 of human ATF-2.	H	WB	100 µg	40975
ATF-6 antibody (mAb) (Clone 70B1413)	Raised against a partial protein of amino acids 1-273 of human ATF-6.	H	IF, WB	100 µg	40962
ATM phospho Ser1981 antibody (mAb) (Clone 10H11.E.12)	Raised against a peptide with phospho-serine 1981 of human ATM.	H, M	IF	200 µl 10 µl	39529 39530
ATRX antibody (pAb)	Raised against a peptide with the C-terminus of human ATRX.	H	WB	100 µl 10 µl	61049 61050
Atxn7 antibody (mAb) (Clone 3SCA-1C1)	Raised a recombinant protein containing amino acids 1-229 of human Atxn7.	H, M	IF, IHC, WB	100 µg 10 µg	61347 61348
Atxn7l3 antibody (mAb) (Clone 2ATX-2B1)	Raised a peptide containing amino acids 278-296 of human Atxn7l3.	H, M	IP, WB	100 µg 10 µg	61339 61340
Aurora B antibody (pAb)	Raised against a peptide with the C-terminus of human Aurora B.	H, M, WR	IF, WB	200 µl 10 µl	39261 39262
<b>NEW</b> BAP1 antibody (pAb)	Raised against a peptide to the C-terminal region of human BAP1.	M	WB	100 µl 10 µl	61501 61502
Bcl3 antibody (pAb)	Raised against a C-terminal peptide of human Bcl3.	H	WB	100 µl 10 µl	39761 39762
Bcl6 antibody (mAb) (Clone 1G191E)	Raised against full-length recombinant human Bcl6 protein.	H	IHC, WB	100 µg 10 µg	61193 61194
Bcl10 antibody (mAb) (Clone 151)	Raised against full-length recombinant human Bcl10 protein.	H	WB	200 µg 10 µg	39393 39394
BCL11A / CTIP1 antibody (pAb)	Raised against a peptide of the N-terminal region of human BCL11A / CTIP1.	H	WB	100 µl 10 µl	61051 61052
BCL11A antibody (mAb) (Clone BCL11A/123)	Raised against a recombinant protein containing amino acids 637-835 of BCL11A-XL (B-cell lymphoma/leukemia 11A extra long form).	H	IF, IHC, WB	100 µg 10 µg	61231 61232

**Reactivity:** B = Bovine; BY = Budding Yeast; Ce = *C. elegans*; Dr = *Drosophila*; FY = Fission Yeast; Hm = Hamster; H = Human; Mk = Monkey; M = Mouse; NS = Not Species Specific; Rb = Rabbit; R = Rat; WR = Wide range predicted  
**Appl.:** ChIP = Chromatin IP; ChCh = ChIP-chip; ChSeq = ChIP-Seq; DB = Dot Blot; FC = Flow Cytometry; ICC = Immunocytochemistry; IF = Immunofluorescence; IHC = Immunohistochemistry; IP = Immunoprecipitation; MeDIP = Methyl-DNA IP; WB = Western Blot



Antibody	Immunogen	Reactivity	Applications	Format	Catalog No.
beta Tubulin antibody (mAb) (Clone 2-28-33)	Raised against sarkosyl-resistant filaments from <i>Strongylocentrotus purpuratus</i> (sea urchin) sperm axonemes.	H, WR	IHC, WB	100 µg 10 µg	61157 61158
BLIMP1 / PRDM1 antibody (pAb)	Raised against a peptide of the N-terminal half of human BLIMP1 / PRDM1.	H	WB	100 µl 10 µl	61053 61054
BLM antibody (pAb)	Raised against a peptide of the N-terminal region of human BLM.	H	WB	100 µl 10 µl	61055 61056
BMI-1 antibody (mAb) (Clone AF27)	Raised against full-length recombinant mouse BMI-1 protein.	H, M	ChIP, IP	100 µg 10 µg	39993 39994
BMI-1 antibody (mAb) (Clone DC9)	Raised against full-length recombinant mouse BMI-1 protein.	H, M	IF, WB	100 µg 10 µg	61089 61090
Boris / CTCFL antibody (pAb)	Raised against a peptide of the N-terminal region of human Boris.	H	WB	100 µl 10 µl	39851 39852
<b>NEW</b> BRD3 antibody (pAb)	Raised against a peptide of the C-terminal of human BRD3.	H, M	WB	100 µl 10 µl	61489 61490
BRD4 antibody (pAb)	Raised against a peptide of the C-terminal of human BRD4.	H	ChIP, IP, WB	100 µl 10 µl	39909 39910
BRD8 / SMAP2 antibody (pAb)	Raised against a peptide of the N-terminal region of human BRD8 / SMAP2.	H	WB	100 µl 10 µl	61007 61008
BrdU antibody (mAb) (Clone Bu20a)	Raised against Bromodeoxyuridine conjugated to BSA.	NS	IHC	100 µg 10 µg	61273 61274
Bub1 antibody (mAb) (Clone I4H5)	Raised against amino acids 281-419 of human Bub1.	H, M	IF, WB	100 µg 10 µg	39735 39736
BubR1 antibody (mAb) (Clone 8G1)	Raised against amino acids 1-350 of human BubR1.	H, M, WR	IF, WB	100 µg 10 µg	39747 39748
CAF-1 p60 antibody (mAb) (Clone 24)	Raised against full-length CAF-1 protein purified from 293 cells.	H, M	IF, IP, WB	100 µg 10 µg	39995 39996
CAF-1 p150 antibody (mAb) (Clone 1)	Raised against full-length CAF-1 protein purified from 293 cells.	H	IF, IP, WB	100 µg 10 µg	39997 39998
CARM1 antibody (pAb)	Raised against a peptide to the C-terminus of mouse CARM1.	H, M, R	WB	200 µl 10 µl	39251 39252
Caspase-3 antibody (mAb) (Clone 31A1067)	Raised against 6xHis-tagged, full-length human Caspase-3 protein.	H, M, R	WB	100 µg	40924
Caspase-7 antibody (mAb) (Clone 25B204.1)	Raised against a recombinant human Caspase-7 protein.	H	WB	100 µg	40929
Caspase-8 antibody (mAb) (Clone 90A992)	Raised against amino acids 217-222 of human Caspase-8.	H	FC, IHC, WB	100 µg	40930
Caspase-9 antibody (pAb) (Pro-form)	Raised against amino acids 299 -318 of human Pro-Caspase-9.	H	WB	100 µg	40931
Caspase-14 antibody (mAb) (Clone 70A1426)	Raised against amino acids 2-18 of mouse Caspase-14.	H, M	WB	100 µg	40932
<b>NEW</b> beta-Catenin antibody (pAb)	Raised against a peptide within the N-terminal region of human beta-Catenin.	H	WB	100 µl 10 µl	61487 61488

**Reactivity:** B = Bovine; BY = Budding Yeast; Ce = *C. elegans*; Dr = *Drosophila*; FY = Fission Yeast; Hm = Hamster; H = Human; Mk = Monkey; M = Mouse; NS = Not Species Specific; Rb = Rabbit; R = Rat; WR = Wide range predicted  
**Appl.:** ChIP = Chromatin IP; ChCh = ChIP-chip; ChSeq = ChIP-Seq; DB = Dot Blot; FC = Flow Cytometry; ICC = Immunocytochemistry; IF = Immunofluorescence; IHC = Immunohistochemistry; IP = Immunoprecipitation; MeDIP = Methyl-DNA IP; WB = Western Blot

Antibody	Immunogen	Reactivity	Applications	Format	Catalog No.
CBX8 antibody (pAb)	Raised against a peptide to the C-terminal region of human CBX8 (Chromobox protein homolog 8).	H	WB	100 µl 10 µl	61237 61238
<b>NEW</b> CDK8 antibody (pAb)	Raised against a peptide to the C-terminal region of human CDK8.	H	WB	100 µl 10 µl	61481 61482
CDT1 antibody (mAb)	Raised against a recombinant protein containing amino acids 177-557 of mouse CDT1.	H	IHC, IP, WB	100 µg 10 µg	61039 61040
<b>NEW</b> CENP-A phospho Ser18 antibody (pAb)	Raised against a peptide containing phosphorylated serine 16 and serine 18 of human CENP-A.	H, WR	DB, IF, WB	100 µl 10 µl	61483 61484
CENP-B antibody (pAb)	Raised against a peptide to the C-terminal region of human CENP-B.	H	IF	100 µg 10 µg	61183 61184
CENP-B antibody (pAb)	Raised against recombinant protein containing the C-terminal region of human CENP-B.	H	WB	100 µl 10 µl	61287 61288
CENP-E antibody (mAb) (Clone 1H12)	Raised against full-length human CENP-E.	H, M	IF	200 µg 10 µg	39619 39620
CGBP antibody (pAb)	Peptide mixture of amino acids 73-90 and 641-656 of human CGBP.	H, M	WB	200 µl	39203
CHD1 antibody (pAb)	Raised against amino acids 251-467 of human CHD1.	H	ChIP, WB	100 µl 10 µl	39729 39730
CHD1 antibody (mAb) (Clone 2F11)	Raised against a peptide to the C-terminus of mouse CHD1.	H, M	IF, WB	100 µg 10 µg	39989 39990
CHD2 antibody (pAb)	Raised against a peptide to the C-terminus of human CHD2.	H, WR	WB	200 µl 10 µl	39363 39364
<b>NEW</b> CHD3 antibody (mAb) (Clone 7A11)	Raised against a peptide containing amino acids 865-885 of <i>Drosophila</i> CHD3.	Dr	IF, IP, WB	100 µg 10 µg	61469 61470
CID antibody (pAb)	Raised against recombinant CID protein from <i>Drosophila</i> .	Dr	WB	100 µl 10 µl	39713 39714
CID antibody (pAb)	Raised against recombinant CID protein from <i>Drosophila</i> .	Dr	IF	100 µl 10 µl	39719 39720
Copine I antibody (pAb)	Raised against amino acids 519-532 of human Copine I.	H	WB	200 µl 10 µl	39101 39102
CoREST antibody (pAb)	Raised against a peptide to the C-terminal region of human CoREST.	H	WB	100 µl 10 µl	39955 39956
CREB antibody (mAb) (Clone 82B514)	Raised against a peptide corresponding to human CREB.	H	WB	100 µg	40961
CTBP antibody (pAb)	Raised against a peptide to the C-terminal region of human CTBP.	H	WB	100 µl 10 µl	39847 39848
CTBP2 antibody (pAb)	Raised against a peptide to the C-terminal region of human CTBP2. This antibody recognizes both isoform 1 and 2	H	WB	100 µl 10 µl	61261 61262
CTCF antibody (pAb)	Raised against a peptide within the C-terminal region of human CTCF.	H, M	ChIP, ChCh, ChSeq, IP, WB	100 µl 10 µl	61311 61312

**Reactivity:** B = Bovine; BY = Budding Yeast; Ce = *C. elegans*; Dr = *Drosophila*; FY = Fission Yeast; Hm = Hamster; H = Human; Mk = Monkey; M = Mouse; NS = Not Species Specific; Rb = Rabbit; R = Rat; WR = Wide range predicted  
**Appl.:** ChIP = Chromatin IP; ChCh = ChIP-chip; ChSeq = ChIP-Seq; DB = Dot Blot; FC = Flow Cytometry; ICC = Immunocytochemistry; IF = Immunofluorescence; IHC = Immunohistochemistry; IP = Immunoprecipitation; MeDIP = Methyl-DNA IP; WB = Western Blot

Antibody	Immunogen	Reactivity	Applications	Format	Catalog No.
CtIP antibody (mAb) (Clone 14-1)	Raised against a recombinant protein containing amino acids 620-897 of human CtIP.	H	IF, IP, WB	100 µg 10 µg	61141 61142
<b>NEW</b> CUL4B antibody (pAb)	Raised against a peptide to the N-terminal region of human CUL4B.	H	WB	100 µl 10 µl	61445 61446
Cyk-4 phospho Ser170 antibody (pAb)	Raised against a peptide with phospho-serine 170 of human Cyk-4.	H	DB, IF, WB	200 µl 10 µl	39265 39266
D4-GDI antibody (mAb) (Clone 97A1015)	Raised against the Fas-induced cleavage site of human D4-GDI.	H	IP, WB	100 µg	40941
DAP-3 antibody (mAb) (Clone 42C617)	Raised against amino acids 51-66 of human DAP-3.	H, M	WB	100 µg	40963
DAP-5 antibody (mAb) (Clone 39C534)	Raised against amino acids 796-812 of human DAP-5.	H, M	WB	100 µg	40964
DAX-1 / NR0B1 antibody (mAb) (Clone 1DA-2F4)	Raised against a peptide with amino acids 135-166 of human DAX-1 / NR0B1.	H, M, R	ELISA, ICC, IF, IHC, IP, WB	100 µg 10 µg	39983 39984
DcR3 antibody (mAb) (Clone 37A565)	Raised against full-length human DcR3.	H	WB	100 µg	40933
DDB1 antibody (pAb)	Raised against a peptide to the C-terminal region of human DDB1.	H	WB	100 µl 10 µl	61127 61128
Ddit3 antibody (mAb) (Clone 9C8)	Raised against full-length recombinant mouse Ddit3 protein.	M	IP, WB	100 µg 10 µg	61349 61350
Dicer antibody (mAb) (Clone N167/7)	Raised against a recombinant protein containing amino acids 1638-1899 of mouse Dicer.	H, M	WB	100 µg 10 µg	39817 39818
DNMT1 antibody (mAb) (Clone 60B1220.1)	Raised against amino acids 637-651 of human DNMT1.	H, M	ChIP, IHC, IP, WB	100 µg	39204
DNMT1 antibody (pAb)	Raised against a recombinant protein containing amino acids 1-110 of human DNMT1.	H	WB	100 µl 10 µl	39905 39906
<b>NEW</b> DNMT1 antibody (mAb) (Clone 2C1)	Raised against full-length recombinant human DNMT1 protein.	H	ChIP, IP, WB	100 µg 10 µg	61467 61468
<b>NEW</b> DNMT1 monomethyl Lys142 antibody (pAb)	Raised against a peptide with monomethyl-lysine 142 of human DNMT1.	H	DB, WB	100 µl 10 µl	61497 61498
DNMT2 antibody (pAb)	Raised against amino acids 39-53 and 361-376 of mouse DNMT2.	H, M	WB	100 µg	39205
DNMT3A antibody (mAb) (Clone 64B1446)	Raised against full-length mouse DNMT3A.	H, M	ChIP, IF, IHC, WB	100 µg	39206
<b>NEW</b> DNMT3A antibody (mAb) (Clone 6A4)	Raised against a peptide with amino acids 200-215 of human DNMT3A.	H, M, WR	WB	100 µg 10 µg	61477 61478
DNMT3A antibody (pAb)	Raised against a recombinant protein containing amino acids 1-247 of mouse DNMT3A.	M	WB	100 µl 10 µl	39897 39898
DNMT3A dimethyl Lys44 antibody (pAb)	Raised against a peptide with dimethyl-lysine 44 of mouse DNMT3A.	H, M	WB	100 µl 10 µl	61323 61324
DNMT3B antibody (mAb) (Clone 52A1018)	Raised against full-length mouse DNMT3B.	H, M	ChIP, IF, IP, WB	100 µg	39207
DNMT3B antibody (pAb)	Raised against a recombinant protein containing amino acids 1-218 of mouse DNMT3B.	M	WB	100 µl 10 µl	39899 39900

**Reactivity:** B = Bovine; BY = Budding Yeast; Ce = *C. elegans*; Dr = *Drosophila*; FY = Fission Yeast; Hm = Hamster; H = Human; Mk = Monkey; M = Mouse; NS = Not Species Specific; Rb = Rabbit; R = Rat; WR = Wide range predicted  
**App.:** ChIP = Chromatin IP; ChCh = ChIP-chip; ChSeq = ChIP-Seq; DB = Dot Blot; FC = Flow Cytometry; ICC = Immunocytochemistry; IF = Immunofluorescence; IHC = Immunohistochemistry; IP = Immunoprecipitation; MeDIP = Methyl-DNA IP; WB = Western Blot

Antibody	Immunogen	Reactivity	Applications	Format	Catalog No.
<b>NEW</b> DNMT3B antibody (mAb) (Clone 2C1)	Raised against a peptide with amino acids 383-396 of human DNMT3B.	H	WB	100 µg 10 µg	61503 61504
DNMT3L antibody (pAb)	Raised against full-length recombinant human DNMT3L.	H	WB	100 µl 10 µl	39907 39908
DOTIL antibody (pAb)	Raised against a peptide to the C-terminal region of human DOT1L.	H	WB	100 µl 10 µl	39953 39954
DPI antibody (pAb)	Raised against a recombinant protein containing amino acids 301-410 of human DPI.	H	WB	100 µl 10 µl	61145 61146
DR4 antibody (mAb) (Clone 32A1380)	Raised against amino acids 1-20 of human DR4.	H	FC, WB	100 µg	40934
DR6 antibody (pAb)	Raised against amino acid residues 371-655 of human DR6.	H	WB	100 µg	40927
DRAK1 antibody (pAb)	Raised against amino acids 5 to 9 of human DRAK1.	H, M	WB	100 µg	40923
DRAK2 antibody (pAb)	Raised against amino acids 351-365 of human DRAK2.	H	WB	100 µg	40926
Drosha antibody (pAb)	Raised against a peptide containing the C-terminal region of human Drosha.	H	WB	100 µl 10 µl	39783 39784
EIA antibody (mAb) (Clone M73)	Raised against full-length recombinant Adenovirus 2 EIA.	Cells infected with Adenovirus	IF, IP, WB	100 µg 10 µg	39771 39772
EDFI antibody (pAb)	Raised against a peptide to the N-terminal region of human EDFI.	H	WB	100 µl 10 µl	61257 61258
EED antibody (mAb) (Clone 41D)	Raised against full-length recombinant human EED protein.	H	ChIP, ChCh, ChSeq, IHC, WB	100 µg 10 µg	61203 61204
EGF Receptor phospho Tyr992 antibody (pAb)	Raised against a peptide with phospho-tyrosine 992 of human EGFR.	H	WB	200 µl	39094
EKLF antibody (mAb) (Clone 7B2)	Raised against a against a full-length recombinant protein to mouse EKLF (Kruppel-like factor 1 (erythroid)).	M	ChIP, IP, WB	100 µg 10 µg	61233 61234
Elk-1 antibody (pAb)	Raised against a peptide within the C-terminal region of human Elk-1.	H	WB	100 µl 10 µl	61301 61302
ELP3 antibody (pAb)	Raised against a peptide to the N-terminal region of human ELP3.	H	WB	100 µl 10 µl	39949 39950
Estrogen Receptor $\alpha$ antibody (mAb) (Clone F3)	Raised against a peptide containing the C-terminal region of human ER $\alpha$ .	H	IP, WB	100 µg 10 µg	61035 61036
Estrogen Receptor $\beta$ antibody (mAb) (Clone CO1531)	Raised against amino acids 212-477 of human ER $\beta$ .	H	ICC, IF, IP, WB	100 µg 10 µg	39767 39768
ERR- $\alpha$ antibody (pAb)	Raised against a peptide containing the C-terminal region of human ERR- $\alpha$ .	H	WB	100 µl 10 µl	61047 61048
ETO / RUNX1T1 antibody (pAb)	Raised against a peptide within the internal region of human ETO / RUNX1T1.	H	WB	100 µl 10 µl	61109 61110
Ets-1 antibody (pAb)	Raised against the C-terminal half of recombinant mouse Ets-1.	H	WB	200 µl 10 µl	39580 39581

**Reactivity:** B = Bovine; BY = Budding Yeast; Ce = *C. elegans*; Dr = *Drosophila*; FY = Fission Yeast; Hm = Hamster; H = Human; Mk = Monkey; M = Mouse; NS = Not Species Specific; Rb = Rabbit; R = Rat; WR = Wide range predicted  
**Appl.:** ChIP = Chromatin IP; ChCh = ChIP-chip; ChSeq = ChIP-Seq; DB = Dot Blot; FC = Flow Cytometry; ICC = Immunocytochemistry; IF = Immunofluorescence; IHC = Immunohistochemistry; IP = Immunoprecipitation; MeDIP = Methyl-DNA IP; WB = Western Blot

Antibody	Immunogen	Reactivity	Applications	Format	Catalog No.
EuHMT1 antibody (pAb)	Raised against a peptide to the N-terminal region of human EuHMT1.	H	WB	100 µg 10 µg	39777 39778
EZH2 antibody (mAb) (Clone AC22)	Raised against a recombinant protein containing amino acids 353-451 of human EZH2.	H, M	ChIP, IF, IP	100 µg 10 µg	39875 39876
EZH2 antibody (pAb)	Raised against a recombinant protein containing amino acids 1-370 of mouse EZH2.	H, M	ChIP, ChCh, ChSeq, WB	100 µl 10 µl	39901 39902
EZH2 antibody (pAb)	Raised against a recombinant protein containing amino acids 1-370 of mouse EZH2.	H, M	WB	100 µl 10 µl	39933 39934
EZH2 phospho Thr345 antibody (pAb)	Raised against a peptide with phospho-threonine 345 of mouse EZH2.	H, M	DB, WB	100 µl 10 µl	61241 61242
FancD2 antibody (pAb)	Raised against a peptide within the internal region of human FancD2.	H	WB	100 µl 10 µl	61057 61058
c-Fos antibody (pAb)	Raised against a peptide to human c-Fos.	H	WB	100 µl 10 µl	61421 61422
FosB antibody (mAb) (Clone 83B1138)	Raised against amino acids 2-14 of human FosB.	H	WB	100 µg	40960
FOXG1 antibody (pAb)	Raised against a peptide to the C-terminal region of human FOXG1.	H	WB	100 µl 10 µl	61211 61212
FOXL2 antibody (pAb)	Raised against a peptide to the N-terminal region of human FOXG1.	H	WB	100 µl 10 µl	61283 61284
FOXO1/FKHR antibody (pAb)	Raised against a peptide to the C-terminal region of human FOXO1/FKHR.	H	WB	200 µl 10 µl	39629 39630
FOXP1 antibody (mAb) (Clone 1G1)	Raised against a recombinant protein containing amino acids 495-578 of mouse FOXP1. This antibody detects three isoforms.	M	ChIP, EMSA, IP, WB	100 µg 10 µg	61309 61310
FTO antibody (pAb)	Raised against a peptide to the N-terminal region of human FTO.	H	WB	100 µl 10 µl	61431 61432
GATA-1 antibody (pAb)	Raised against amino acids 66-78 of human GATA-1.	H, M, R	ChIP, WB	100 µl	39025
GATA-4 antibody (pAb)	Raised against a peptide to the C-terminal region of human GATA-4.	H	WB	100 µl 10 µl	39893 39894
GATA-6 antibody (pAb)	Raised against a peptide to the N-terminal region of human GATA-6.	H	WB	100 µl 10 µl	61063 61064
GCN5 antibody (pAb)	Raised against a peptide to the N-terminal region of human GCN5.	H	WB	100 µl 10 µl	39831 39832
GCN5 antibody (mAb) (Clone 2GC-211)	Raised against a peptide to amino acids 18-132 of human GCN5.	H	ELISA, IF, WB	100 µg	39975
Geminin antibody (pAb)	Raised against full-length recombinant human Geminin protein.	H	IP, WB	100 µl 10 µl	61135 61136
GLI1 antibody (pAb)	Raised against a peptide containing the C-terminal region of human GLI1.	H	WB	100 µl 10 µl	61215 61216

**Reactivity:** B = Bovine; BY = Budding Yeast; Ce = *C. elegans*; Dr = *Drosophila*; FY = Fission Yeast; Hm = Hamster; H = Human; Mk = Monkey; M = Mouse; NS = Not Species Specific; Rb = Rabbit; R = Rat; WR = Wide range predicted  
**Appl.:** ChIP = Chromatin IP; ChCh = ChIP-chip; ChSeq = ChIP-Seq; DB = Dot Blot; FC = Flow Cytometry; ICC = Immunocytochemistry; IF = Immunofluorescence; IHC = Immunohistochemistry; IP = Immunoprecipitation; MeDIP = Methyl-DNA IP; WB = Western Blot



Antibody	Immunogen	Reactivity	Applications	Format	Catalog No.
Goosecoid antibody (pAb)	Raised against a peptide to the N-terminal region of human homeobox protein Goosecoid.	H	WB	100 µl 10 µl	61121 61122
HA Tag antibody (mAb) (Clone 3B9)	Raised against synthetic peptide containing multiple repeats of the HA tag epitope, YPYDVPDYA.	WR	IP	200 µg 10 µg	39627 39628
Hbo1 antibody (pAb)	Raised against a peptide to amino acids 158-172 of human Hbo1.	H, WR	WB	200 µl 10 µl	39105 39106
HDAC1 antibody (mAb) (Clone 10E2)	Raised against a KLH-peptide to amino acids 467-482 of human and murine HDAC1. (Concentrated culture supernatant)	H, M, R	ChIP, IF, IHC, IP, WB	200 µl 10 µl	39531 39532
HDAC1 antibody (mAb) (Clone 10E2)	Raised against a peptide to amino acids 467-482 of murine HDAC1. (Purified mouse IgG)	H, M, R	WB	100 µg 10 µg	39881 39882
HDAC1 antibody (pAb)	Peptide mixture of amino acids 1-5, 433-448, 467-482 of human HDAC1.	H, M, R	ChIP, ChCh, ChSeq, IP, WB	100 µg	40967
HDAC2 antibody (mAb) (Clone 3F3)	Raised against a KLH-peptide to amino acids 541-556 of human HDAC2. (Concentrated culture supernatant)	H, M, R	ChIP, IF, IHC, IP, WB	200 µl 10 µl	39533 39534
HDAC2 antibody (mAb) (Clone 3F3)	Raised against a peptide to amino acids 541-556 of human HDAC2. (Purified mouse IgG)	H, M, R	WB	100 µg 10 µg	39883 39884
HDAC3 antibody (pAb)	Raised against amino acids 2-17 of human HDAC3.	H	ChIP, WB	100 µg	40968
HDAC3 antibody (mAb) (Clone 3G6)	Raised against amino acids 411-428 of human HDAC3.	H	IHC, IP, WB	100 µg 10 µg	39717 39718
HDAC4 antibody (pAb)	Raised against amino acids 194-209 of human HDAC4.	H	ChIP, WB	100 µg	40969
HDAC5 antibody (pAb)	Raised against amino acids 572-587 of human HDAC5.	H, M	ChIP, WB	100 µg	40970
HDAC6 antibody (pAb)	Raised against amino acids 1-16 of human HDAC6.	H, M	ChIP, WB	100 µg	40971
HDAC9 antibody (pAb)	Raised against a peptide containing the C-terminal region of human HDAC9.	H	WB	100 µl 10 µl	39793 39794
HDAC11 antibody (pAb)	Raised against amino acids 238-251 of human HDAC11.	H, M	WB	200 µl	39208
HIF-1 alpha antibody (mAb) (Clone ESEE122)	Raised against a partial protein including amino acids 329-530 of human HIF-1 alpha.	B, H, M, R	IHC	100 µg 10 µg	61275 61276
HIF-1 alpha antibody (pAb)	Raised against a peptide to the N-terminal region of human HIF-1 alpha.	H	WB	100 µl 10 µl	39665 39666
HIPK1 antibody (mAb)	Raised against a recombinant protein including amino acids 702-925 of mouse HIPK1.	M	IF	100 µg 10 µg	39725 39726
HIPK2 antibody (mAb)	Raised against a recombinant protein including amino acids 898-1051 of mouse HIPK2.	H	IF, IHC, IP, WB	100 µg 10 µg	39677 39678
HIRA antibody (mAb) (Clone WC15)	Raised against amino acids 421-729 of GST-tagged human HIRA.	H, M	IP	200 µg 10 µg	39555 39556
HIRA antibody (mAb) (Clone WC119.2H11)	Raised against amino acids 421-729 of GST-tagged human HIRA.	H, M	WB	200 µg 10 µg	39557 39558

**Reactivity:** B = Bovine; BY = Budding Yeast; Ce = *C. elegans*; Dr = *Drosophila*; FY = Fission Yeast; Hm = Hamster; H = Human; Mk = Monkey; M = Mouse; NS = Not Species Specific; Rb = Rabbit; R = Rat; WR = Wide range predicted  
**Appl.:** ChIP = Chromatin IP; ChCh = ChIP-chip; ChSeq = ChIP-Seq; DB = Dot Blot; FC = Flow Cytometry; ICC = Immunocytochemistry; IF = Immunofluorescence; IHC = Immunohistochemistry; IP = Immunoprecipitation; MeDIP = Methyl-DNA IP; WB = Western Blot

Antibody	Immunogen	Reactivity	Applications	Format	Catalog No.
Histone H1 antibody (pAb)	Raised against recombinant <i>Drosophila</i> histone H1.	Dr	ChIP, IF, IP, WB	100 µl	39575
Histone H1.0 antibody (pAb)	Raised against a peptide to the N-terminal region of human histone H1.0.	H, M	WB	100 µl	61417
				10 µl	61418
Histone H1 antibody (pAb)	Raised against purified calf thymus histone H1. (Purified rabbit IgG)	H, WR	WB	100 µg	61201
				10 µg	61202
Histone H1 antibody (pAb)	Raised against purified calf thymus histone H1. (Rabbit serum)	H, WR	IF, WB	100 µl	39707
				10 µl	39708
Histone H1.5S17ph antibody (pAb)	Raised against a peptide with phospho-serine 17 of human histone H1.5.	H, WR	DB, WB	100 µl	61107
				10 µl	61108
Histone H2A antibody (pAb)	Raised against recombinant yeast histone H2A. (Rabbit serum)	BY, FY	ChIP, WB	200 µl	39235
				10 µl	39236
Histone H2A antibody (pAb)	Raised against recombinant yeast histone H2A. (Purified rabbit IgG)	BY, FY	WB	100 µg	39945
				10 µg	39946
Histone H2A antibody (pAb)	Peptide mixture of amino acids 1-5 and 81-96 of human histone H2A.	H	WB	100 µg	39209
Histone H2A, acidic patch antibody (pAb)	Raised against a peptide with amino acids 89-91 of human histone H2A.	H, WR	ChIP, WB	200 µl	39111
				10 µl	39112
Histone H2A, C-terminal antibody (pAb)	Raised against a peptide with the C-terminal region of human histone H2A.	H, WR	WB	200 µl	39591
				10 µl	39592
Histone H2AK5ac antibody (pAb)	Raised against a peptide with acetyl-lysine 5 of human histone H2A.	H, WR	DB, WB	200 µl	39107
				10 µl	39108
Histone H2AK9ac antibody (pAb)	Raised against a peptide with acetyl-lysine 9 of human histone H2A.	H, WR	DB, WB	200 µl	39109
				10 µl	39110
Histone H2AT120ph antibody (pAb)	Raised against a peptide with phospho-threonine 120 of human histone H2A. (Rabbit serum)	H, WR	DB, WB	200 µl	39391
				10 µl	39392
Histone H2AT120ph antibody (pAb)	Raised against a peptide with phospho-threonine 120 of human histone H2A. (Purified rabbit IgG)	H, WR	DB, WB	100 µg	61195
				10 µg	61196
Histone H2AS129ph antibody (pAb)	Raised against peptide with phospho-serine 129 of budding yeast H2A.	BY	ChIP, DB, IF, IP, WB	200 µl	39271
				10 µl	39272
Histone macroH2A1 antibody (pAb)	Raised against the N-terminal half of recombinant mouse macroH2A1.	H, M	IF, WB	200 µl	39593
				10 µl	39594
Histone macroH2A1.1 antibody (pAb)	Raised against a peptide to amino acids 198-226 of human macroH2A1.1.	H	IF, IHC, WB	100 µg	39871
				10 µg	39872
Histone macroH2A1.2 antibody (mAb)	Raised against a peptide to amino acids 198-228 of human macroH2A1.2.	H	IF, IHC, WB	100 µl	61427
				10 µl	61428
Histone macroH2A2 antibody (pAb)	Raised against a peptide to amino acids 162-372 of human macroH2A2.	H	IF, IHC, WB	100 µg	39873
				10 µg	39874
Histone H2A/H4S1ph antibody (pAb)	Raised against a peptide with phospho-serine 1 of human histone H2A.	H, WR	DB, WB	200 µl	39115
				10 µl	39116

**Reactivity:** B = Bovine; BY = Budding Yeast; Ce = *C. elegans*; Dr = *Drosophila*; FY = Fission Yeast; Hm = Hamster; H = Human; Mk = Monkey; M = Mouse; NS = Not Species Specific; Rb = Rabbit; R = Rat; WR = Wide range predicted  
**Appl.:** ChIP = Chromatin IP; ChCh = ChIP-chip; ChSeq = ChIP-Seq; DB = Dot Blot; FC = Flow Cytometry; ICC = Immunocytochemistry; IF = Immunofluorescence; IHC = Immunohistochemistry; IP = Immunoprecipitation; MeDIP = Methyl-DNA IP; WB = Western Blot

Antibody	Immunogen	Reactivity	Applications	Format	Catalog No.
Histone H2Av antibody (pAb)	Raised against a peptide in the C-terminus of the <i>Drosophila melanogaster</i> histone variant H2Av.	Dr	ChIP, ChCh, ChSeq, WB	100 µl	39715
				10 µl	39716
Histone H2A.X antibody (pAb) (H2AX)	Raised against a peptide to the C-terminus of human histone H2AX.	H	IF, WB	100 µl	39689
				10 µl	39690
Histone H2A.XS139ph antibody (pAb)	Raised against a peptide with phospho-serine 139 of human histone H2AX.	H, WR	DB, IF, WB	200 µg	39117
				10 µg	39118
Histone H2A.Z antibody (pAb) (H2AZ)	Raised against a peptide to the C-terminus of human histone H2A.Z. (Purified rabbit IgG)	H, WR	ChIP, DB, WB	100 µg	39943
				10 µg	39944
Histone H2A.Z antibody (pAb) (H2AZ)	Raised against a peptide to the C-terminus of human histone H2A.Z. (Rabbit serum)	H, WR	ChIP, ChCh, ChSeq, DB, IP, WB	200 µl	39113
				10 µl	39114
Htz1 / Histone H2A.Z antibody (pAb)	Raised against full-length Htz1 protein, the <i>S. cerevisiae</i> homolog of Histone H2A.Z.	BY	ChIP, WB	100 µl	39647
				10 µl	39648
Pht1 / Histone H2A.Z antibody (pAb)	Raised against a peptide with the C-terminus of Pht1, the Histone H2A variant in <i>S. pombe</i> .	FY	WB	100 µl	39640
				10 µl	39641
Pht1 / Histone H2A.Zac (pan-acetyl) antibody (pAb)	Raised against a peptide with acetyl-lysine at positions 5, 7, 12 and 16 from the amino terminus of Pht1, the Histone H2A variant in <i>S. pombe</i> .	FY	DB, WB	100 µl	39642
				10 µl	39643
Histone H2B antibody (pAb)	Raised against a peptide with the C-terminus of human histone H2B.	H, WR	WB	200 µl	39125
				10 µl	39126
Histone H2B antibody (pAb)	Raised against recombinant yeast histone H2B. (Rabbit serum)	BY, FY	ChIP, WB	200 µl	39237
				10 µl	39238
Histone H2B antibody (pAb)	Raised against recombinant yeast histone H2B. (Purified rabbit IgG)	BY, FY	WB	100 µg	39947
				10 µg	39948
Histone H2B antibody (pAb)	Raised against amino acids 111-125 of human histone H2B.	H	WB	100 µg	39210
				10 µg	61037
Histone H2B antibody (mAb) (Clone 5HH2-2A8)	Raised against a peptide with the C-terminus of human histone H2B.	H	WB	100 µg	61038
				10 µg	61038
Histone H2BK5ac antibody (pAb)	Raised against a peptide with acetyl-lysine 5 of human histone H2B.	H, WR	ChIP, ChCh, ChSeq, DB, WB	200 µl	39123
				10 µl	39124
Histone H2BK5me1 antibody (pAb)	Raised against a peptide with monomethyl-lysine 5 of human histone H2B.	H, WR	DB, WB	100 µl	61439
				10 µl	61440
Histone H2BK12ac antibody (pAb)	Raised against a peptide with acetyl-lysine 12 of human histone H2B.	H, WR	ChIP, DB, WB	100 µl	39669
				10 µl	39670
Histone H2BS14ph antibody (mAb) (Clone MABI 0251)	Raised against a peptide with phospho-serine 14 of human histone H2B.	H, WR	IF, IP, WB	100 µg	61011
				10 µg	61011
Histone H2BK15ac antibody (pAb)	Raised against a peptide with acetyl-lysine 15 of human histone H2B.	H, WR	DB, WB	100 µl	61321
				10 µl	61322
Histone H2BK16ac antibody (pAb)	Raised against a peptide with acetyl-lysine 16 of human histone H2B.	H, WR	ChIP, DB, WB	200 µl	39121
				10 µl	39122

**Reactivity:** B = Bovine; BY = Budding Yeast; Ce = *C. elegans*; Dr = *Drosophila*; FY = Fission Yeast; Hm = Hamster; H = Human; Mk = Monkey; M = Mouse; NS = Not Species Specific; Rb = Rabbit; R = Rat; WR = Wide range predicted  
**Appl.:** ChIP = Chromatin IP; ChCh = ChIP-chip; ChSeq = ChIP-Seq; DB = Dot Blot; FC = Flow Cytometry; ICC = Immunocytochemistry; IF = Immunofluorescence; IHC = Immunohistochemistry; IP = Immunoprecipitation; MeDIP = Methyl-DNA IP; WB = Western Blot

Antibody	Immunogen	Reactivity	Applications	Format	Catalog No.
Histone H2BK46ac antibody (pAb)	Raised against a peptide with acetyl-lysine 46 of human histone H2B.	H, WR	ChIP, DB, WB	200 µl 10 µl	39571 39572
Histone H2BK46me2 antibody (pAb)	Peptide containing dimethyl-lysine 46 of human histone H2B.	H, WR	DB, IF, WB	200 µl 10 µl	39567 39568
Histone H2BK120ac antibody (pAb)	Raised against a peptide with acetyl-lysine 120 of human histone H2B.	H, WR	ChIP, ChCh, ChSeq, DB, WB	200 µl 10 µl	39119 39120
Histone H2BK120ub1 antibody (mAb) (Clone 56)	Raised against a branched peptide corresponding the the ubiquitin conjugation site at Lys120 of human Histone H2B.	H, WR	ChIP, WB	100 µg 10 µg	39623 39624
Histone H3 antibody (mAb) (Clone MABI 0301)	Raised against an N-terminal peptide of human histone H3.	H, WR	ChIP, IF, TR-FRET, WB	100 µg	39763
<b>NEW</b> Histone H3 antibody (mAb) (Clone 1B1-B2)	Raised against a C-terminal peptide of human histone H3.	H, WR	ChIP, WB	100 µg 10 µg	61475 61476
Histone H3, C-terminal antibody (pAb)	Raised against a C-terminal peptide of human histone H3. (Rabbit serum)	BY, H, WR	ChIP, ELISA, WB	200 µl 10 µl	39163 39164
Histone H3, C-terminal antibody (pAb)	Raised against a C-terminal peptide of human histone H3. (Purified rabbit IgG)	H, WR	ChIP, IP, WB	100 µg 10 µg	61277 61278
Histone H3.csl antibody (pAb)	Raised against peptide with a Cathepsin L cleavage site at N-terminal histone H3.	H	WB	200 µl 10 µl	39573 39574
Histone H3ac (pan-acetyl) antibody (pAb)	Raised against peptide with acetyl-lysines at the H3 N-terminal tail.	H, WR	ChIP, DB, WB	200 µl 10 µl	39139 39140
Histone H3R2me2s (symmetric) antibody (pAb)	Raised against a peptide with dimethyl-arginine 2 (symmetric) of human histone H3.	H, WR	DB, WB	100 µl 10 µl	39703 39704
Histone H3T3ph antibody (pAb)	Raised against a peptide with phospho-threonine 3 of human histone H3.	H, WR	DB, WB	200 µl 10 µl	39153 39154
Histone H3K4ac antibody (pAb)	Raised against a peptide with acetyl-lysine 4 of human histone H3.	H, WR	ChIP, DB, IF, WB	200 µl 10 µl	39381 39382
Histone H3K4me1 antibody (mAb) (Clone MABI 0302)	Raised against a peptide with monomethyl-lysine 4 of human histone H3.	H, WR	ChIP, DB, TR-FRET, WB	100 µg	39635
Histone H3K4me1 antibody (pAb)	Raised against peptide with monomethyl-lysine 4 of human histone H3.	H, M, WR	ChIP, ChCh, ChSeq, DB, ELISA, IF, IP, WB	200 µl 10 µl	39297 39298
Histone H3K4me2 antibody (mAb) (Clone MABI 0303)	Raised against a peptide with dimethyl-lysine 4 of human histone H3.	H, M, WR	ChIP, DB, IF, TR-FRET, WB	100 µg	39679
Histone H3K4me2 antibody (pAb)	Raised against a peptide with dimethyl-lysine 4 of human histone H3. (Rabbit serum)	H, M, WR	ChIP, ChCh, ChSeq, DB, ELISA, IP, WB	200 µl 10 µl	39141 39142
Histone H3K4me2 antibody (pAb)	Raised against a peptide with dimethyl-lysine 4 of human histone H3. (Purified rabbit IgG)	H, M, WR	ChIP, DB, IF, WB	100 µg 10 µg	39913 39914
Histone H3K4me3 antibody (mAb) (Clone MABI 0304)	Raised against a peptide with trimethyl-lysine 4 of human histone H3.	H, WR	IF, IP, WB	100 µg	61379

**Reactivity:** B = Bovine; BY = Budding Yeast; Ce = *C. elegans*; Dr = *Drosophila*; FY = Fission Yeast; Hm = Hamster; H = Human; Mk = Monkey; M = Mouse; NS = Not Species Specific; Rb = Rabbit; R = Rat; WR = Wide range predicted  
**Appl.:** ChIP = Chromatin IP; ChCh = ChIP-chip; ChSeq = ChIP-Seq; DB = Dot Blot; FC = Flow Cytometry; ICC = Immunocytochemistry; IF = Immunofluorescence; IHC = Immunohistochemistry; IP = Immunoprecipitation; MeDIP = Methyl-DNA IP; WB = Western Blot

Antibody	Immunogen	Reactivity	Applications	Format	Catalog No.
Histone H3K4me3 antibody (pAb)	Raised against a peptide with trimethyl-lysine 4 of human histone H3. (Rabbit serum)	BY, H, M, WR	ChIP, ChCh, ChSeq, DB, ELISA, IF, IP, WB	100 µl 10 µl	39159 39160
Histone H3K4me3 antibody (pAb)	Raised against a peptide with trimethyl-lysine 4 of human histone H3. (Purified rabbit IgG)	BY, H, M, WR	ChIP, ChCh, ChSeq, DB, IF, IP, WB	100 µg 10 µg	39915 39916
Histone H3K4K9K18 (pan-biotinylated) antibody (pAb)	Raised against peptide with biotinylated-lysine 4 of human histone H3.	H	DB, IF, WB	100 µl 10 µl	61391 61392
Histone H3R8me1 antibody (pAb)	Raised against a peptide with monomethyl-arginine 8 of human histone H3.	H, WR	DB, WB	100 µl 10 µl	39673 39674
Histone H3R8me2a (asymmetric) antibody (pAb)	Raised against a peptide with dimethyl-arginine 8 (asymmetric) of human histone H3.	H	DB, WB	100 µl 10 µl	39651 39652
Histone H3K9ac antibody (mAb) (Clone 1B10)	Raised against a peptide with acetyl-lysine 9 of human histone H3.	H, M, WR	ChIP, ChCh, ChSeq, DB, IF, IP, WB	100 µg 10 µg	61251 61252
Histone H3K9ac antibody (pAb)	Raised against a peptide with acetyl-lysine 9 of human histone H3. (Purified rabbit IgG)	H, M, WR	ChIP, ChCh, ChSeq, DB, IF, IP, WB	100 µg 10 µg	39917 39918
Histone H3K9ac antibody (pAb)	Raised against a peptide with acetyl-lysine 9 of human histone H3. (Rabbit serum)	H, M, WR	ChIP, ChCh, ChSeq, DB, WB	200 µl 10 µl	39137 39138
Histone H3K9ac antibody (pAb)	Raised against a peptide with acetyl-lysine 9 of human histone H3.	H, WR	DB, ELISA, IF, WB	200 µl 10 µl	39585 39586
Histone H3K9me1me2me3 antibody (pAb)	Raised against a peptide with methyl-lysine 9 of human histone H3.	H, WR	DB, IF, WB	200 µl 10 µl	39241 39242
Histone H3K9me0 antibody (mAb) (Clone 9B1-2G6)	Raised against a branched peptide corresponding to amino acids surrounding Lys9 of human Histone H3.	H, WR	DB, WB	100 µg 10 µg	61399 61400
Histone H3K9me1 antibody (pAb)	Raised against a peptide with monomethyl-lysine 9 of human histone H3. (Purified rabbit IgG)	H, WR	ChIP, ChCh, ChSeq, DB, WB	100 µg 10 µg	39887 39888
Histone H3K9me1 antibody (mAb) (Clone MABI 0306)	Raised against a peptide with monomethyl-lysine 9 of human histone H3.	H, WR	ChIP, DB, WB	100 µg	39681
Histone H3K9me1 antibody (pAb)	Raised against a peptide with monomethyl-lysine 9 of human histone H3. (Rabbit serum)	H, WR	DB, IF, WB	200 µl 10 µl	39249 39250
Histone H3K9me2 antibody (mAb) (Clone MABI 0307)	Raised against a peptide with dimethyl-lysine 9 of human histone H3.	H, WR	ChIP, DB, IF, TR-FRET, WB	100 µg	39683
Histone H3K9me2 antibody (pAb)	Raised against a peptide with dimethyl-lysine 9 of human histone H3.	H, M, WR	ChIP, DB, IF, IP, WB	200 µl 10 µl	39239 39240
Histone H3K9me2 antibody (pAb)	Raised against a peptide with dimethyl-lysine 9 of human histone H3. (Rabbit serum)	H, WR	ChIP, DB, ELISA, IF, WB	200 µl 10 µl	39375 39376
Histone H3K9me2 antibody (pAb)	Raised against a peptide with dimethyl-lysine 9 of human histone H3. (Purified rabbit IgG)	H, WR	ChIP, DB, IF, WB	100 µg 10 µg	39753 39754
Histone H3K9me3 antibody (mAb) (Clone MABI 0319)	Raised against peptide with trimethyl-lysine 9 of human histone H3.	H, WR	ChIP, DB, IF, IP, WB	100 µg	61013

**Reactivity:** B = Bovine; BY = Budding Yeast; Ce = *C. elegans*; Dr = *Drosophila*; FY = Fission Yeast; Hm = Hamster; H = Human; Mk = Monkey; M = Mouse; NS = Not Species Specific; Rb = Rabbit; R = Rat; WR = Wide range predicted  
**Appl.:** ChIP = Chromatin IP; ChCh = ChIP-chip; ChSeq = ChIP-Seq; DB = Dot Blot; FC = Flow Cytometry; ICC = Immunocytochemistry; IF = Immunofluorescence; IHC = Immunohistochemistry; IP = Immunoprecipitation; MeDIP = Methyl-DNA IP; WB = Western Blot



Antibody	Immunogen	Reactivity	Applications	Format	Catalog No.
Histone H3K9me3 antibody (mAb) (Clone 2AG-6F12-H4)	Raised against a peptide with trimethyl-lysine 9 of human histone H3.	H, WR	DB, IF, IP, WB	200 µl	39285
				10 µl	39286
Histone H3K9me3 antibody (pAb)	Raised against a peptide with trimethyl-lysine 9 of human histone H3. (Rabbit serum)	FY, H, WR	ChIP, ChCh, ChSeq, DB, ELISA, IF, IP, WB	200 µl	39161
				10 µl	39162
Histone H3K9me3 antibody (pAb)	Raised against a peptide with trimethyl-lysine 9 of human histone H3. (Purified rabbit IgG)	H, WR	ChIP, DB, IF, WB	100 µg	39765
				10 µg	39766
Histone H3K9me2S10ph / H3K27me2S28ph antibody (mAb) (Clone 51Ta2H12)	Raised against a peptide with amino acid residues 180-195 of human TAF10. It recognizes H3 doubly modified at K9me2S10ph and/or K27me2S28ph.	H, WR	DB, IF, WB	100 µg	61429
				10 µg	61430
Histone H3S10ph antibody (mAb) (Clone MABI 0312)	Raised against a peptide with phospho-serine 10 of human histone H3.	H, WR	ELISA, IF	100 µg	39636
Histone H3S10ph antibody (pAb)	Raised against a peptide with phospho-serine 10 of human histone H3.	H, WR	ChIP, DB, IF, WB	200 µl	39253
				10 µl	39254
Histone H3S10phS28ph antibody (pAb)	Raised against a peptide with phospho-serine 28 of human histone H3.	H, WR	ChIP, DB, IF, WB	200 µl	39147
				10 µl	39148
Histone H3T11ph antibody (mAb) (Clone NI23/48)	Raised against a peptide with phospho-threonine 11 of human histone H3.	H	DB, ICC, WB	100 µg	39821
				10 µg	39822
Histone H3T11ph antibody (pAb)	Raised against a peptide with phospho-threonine 11 of human histone H3. (Rabbit serum)	H, WR	ChIP, ChCh, ChSeq, DB, WB	200 µl	39151
				10 µl	39152
Histone H3T11ph antibody (pAb)	Raised against a peptide with phospho-threonine 11 of human histone H3. (Purified rabbit IgG)	H, WR	DB, WB	100 µg	61197
				10 µg	61198
Histone H3K14ac antibody (pAb)	Raised against a peptide with acetyl-lysine 14 of human histone H3. (Rabbit serum)	H, M, WR	ChIP, ChCh, ChSeq, DB, ELISA, IP, WB	200 µl	39599
				10 µl	39616
Histone H3K14ac antibody (pAb)	Raised against a peptide with acetyl-lysine 14 of human histone H3. (Purified rabbit IgG)	H, M, WR	ChIP, DB, WB	100 µg	39697
				10 µg	39698
Histone H3K14ac antibody (mAb) (Clone I3HH3-1A5)	Raised against a peptide with acetyl-lysine 14 of human histone H3.	H, M, WR	ChIP	100 µg	61433
<b>NEW</b> Histone H3K14me1 antibody (pAb)	Raised against a peptide with monomethyl-lysine 14 of human histone H3.	H, WR	WB	100 µl	61509
				10 µl	61510
Histone H3K14me2 antibody (pAb)	Raised against a peptide with dimethyl-lysine 14 of human histone H3.	H, WR	DB, WB	200 µl	39349
				10 µl	39350
Histone H3R17me2a (asymmetric) antibody (pAb)	Raised against a peptide with dimethyl-arginine 17 (asymmetric) of human histone H3.	H, WR	DB, WB	100 µl	39709
				10 µl	39710
Histone H3K18ac antibody (pAb)	Raised against a peptide with acetyl-lysine 18 of human histone H3. (Purified rabbit IgG)	H, WR	ChIP, ChCh, ChSeq, DB, IF, IP, WB	100 µg	39755
				10 µg	39756
Histone H3K18ac antibody (pAb)	Raised against a peptide with acetyl-lysine 18 of human histone H3. (Rabbit serum)	H, WR	ChIP, DB, IF, WB	200 µl	39587
				10 µl	39588
Histone H3K18ac antibody (pAb)	Raised against a peptide with acetyl-lysine 18 of human histone H3.	H, WR	ChIP, DB, IF, WB	100 µl	39693
				10 µl	39694

**Reactivity:** B = Bovine; BY = Budding Yeast; Ce = *C. elegans*; Dr = *Drosophila*; FY = Fission Yeast; Hm = Hamster; H = Human; Mk = Monkey; M = Mouse; NS = Not Species Specific; Rb = Rabbit; R = Rat; WR = Wide range predicted  
**Appl.:** ChIP = Chromatin IP; ChCh = ChIP-chip; ChSeq = ChIP-Seq; DB = Dot Blot; FC = Flow Cytometry; ICC = Immunocytochemistry; IF = Immunofluorescence; IHC = Immunohistochemistry; IP = Immunoprecipitation; MeDIP = Methyl-DNA IP; WB = Western Blot

Antibody	Immunogen	Reactivity	Applications	Format	Catalog No.
Histone H3K18ac antibody (pAb)	Raised against a peptide with acetyl-lysine 18 of human histone H3.	H, WR	DB, IF, WB	200 µl 10 µl	39129 39130
Histone H3K18me1 antibody (pAb)	Raised against a peptide with monomethyl-lysine 18 of human histone H3.	H	DB, WB	100 µl 10 µl	39667 39668
Histone H3K23ac antibody (pAb)	Raised against a peptide with acetyl-lysine 23 of human histone H3.	H, WR	ChIP, DB, IF, WB	200 µl 10 µl	39131 39132
Histone H3K23me1 antibody (pAb)	Raised against a peptide with monomethyl-lysine 23 of human histone H3.	H, WR	DB, WB	200 µl 10 µl	39387 39388
Histone H3K23me2 antibody (pAb)	Raised against a peptide with dimethyl-lysine 23 of human histone H3.	H	DB, WB	100 µl 10 µl	39653 39654
<b>NEW</b> Histone H3K23me3 antibody (pAb)	Raised against a peptide with trimethyl-lysine 23 of human histone H3.	H, WR	DB	100 µl 10 µl	61499 61500
Histone H3K23pr antibody (pAb)	Raised against a peptide with propionyl-lysine 23 of human histone H3.	H	DB, WB	100 µl 10 µl	61397 61398
Histone H3K27ac antibody (mAb) (Clone MABI 0309)	Raised against a peptide with acetyl-lysine 27 of human histone H3.	H, WR	ChIP, DB, IF, WB	100 µg	39685
Histone H3K27ac antibody (pAb)	Raised against a peptide with acetyl-lysine 27 of human histone H3. (Purified rabbit IgG)	BY, H, WR	ChIP, ChCh, ChSeq, DB, IF, IP, WB	100 µg 10 µg	39133 39134
Histone H3K27ac antibody (pAb)	Raised against a peptide with acetyl-lysine 27 of human histone H3. (Rabbit serum)	BY, H, WR	ChIP, ChCh, ChSeq, DB, WB	200 µl 10 µl	39135 39136
Histone H3K27me1 antibody (mAb) (Clone MABI 0321)	Raised against peptide with monomethyl-lysine 27 of human histone H3.	H, WR	ChIP, DB, IF, IP, TR-FRET, WB	100 µg	61015
Histone H3K27me1 antibody (pAb)	Raised against peptide with monomethyl-lysine 27 of human histone H3. (Rabbit serum)	H, WR	DB, IF, WB	200 µl 10 µl	39377 39378
Histone H3K27me1 antibody (pAb)	Raised against peptide with monomethyl-lysine 27 of human histone H3. (Purified rabbit IgG)	H, WR	DB, WB	100 µg 10 µg	39889 39890
Histone H3K27me2 antibody (pAb)	Raised against a peptide with dimethyl-lysine 27 of human histone H3. (Rabbit serum)	H, WR	ChIP, DB, IF, WB	200 µl 10 µl	39245 39246
Histone H3K27me2 antibody (pAb)	Raised against a peptide with dimethyl-lysine 27 of human histone H3. (Purified mouse IgG)	H, WR	DB, IF, WB	100 µg 10 µg	39919 39920
Histone H3K27me2 antibody (mAb) (Clone MABI 0324)	Raised against a peptide with dimethyl-lysine 27 of human histone H3.	H, WR	ChIP, IF, IP, WB	100 µg	61435
Histone H3K27me2me3 antibody (mAb) (Clone 7B11)	Raised against a peptide with trimethyl-lysine 27 of human histone H3. (Ascites)	H, M, WR	ChIP, ChCh, ChSeq, WB	200 µl 10 µl	39535 39537
Histone H3K27me2me3 antibody (mAb) (Clone 7B11)	Raised against a peptide with trimethyl-lysine 27 of human histone H3.	H, WR	IF, WB	200 µl 10 µl	39536 39538
Histone H3K27me3 antibody (mAb) (Clone MABI 0323)	Raised against peptide with trimethyl-lysine 27 of human histone H3.	H, M, WR	ChIP, DB, IF, IP, TR-FRET, WB	100 µg	61017

**Reactivity:** B = Bovine; BY = Budding Yeast; Ce = *C. elegans*; Dr = *Drosophila*; FY = Fission Yeast; Hm = Hamster; H = Human; Mk = Monkey; M = Mouse; NS = Not Species Specific; Rb = Rabbit; R = Rat; WR = Wide range predicted  
**Appl.:** ChIP = Chromatin IP; ChCh = ChIP-chip; ChSeq = ChIP-Seq; DB = Dot Blot; FC = Flow Cytometry; ICC = Immunocytochemistry; IF = Immunofluorescence; IHC = Immunohistochemistry; IP = Immunoprecipitation; MeDIP = Methyl-DNA IP; WB = Western Blot

Antibody	Immunogen	Reactivity	Applications	Format	Catalog No.
Histone H3K27me3 antibody (pAb)	Raised against a peptide with trimethyl-lysine 27 of human histone H3. (Purified rabbit IgG)	H, M, WR	ChIP, ChCh, ChSeq, DB, IF, IP, WB	200 µg 10 µg	39155 39157
Histone H3K27me3 antibody (pAb)	Raised against a peptide with trimethyl-lysine 27 of human histone H3. (Rabbit serum)	H, M, WR	ChIP, DB, ELISA, WB	200 µl 10 µl	39156 39158
Histone H3S28ph antibody (mAb) (Clone HTA28)	Raised against a peptide with phospho-serine 28 of human histone H3. (Purified rat IgG)	H, M, R	ELISA, IF, WB	100 µl	39098
Histone H3S28ph antibody (mAb) (Clone HTA28)	Raised against a peptide with phospho-serine 28 of human histone H3. (Ascites)	H, M, R	ELISA, WB	100 µl	61325
Histone H3S28ph antibody (pAb)	Raised against a peptide with phospho-serine 28 of human histone H3.	H, WR	DB, WB	200 µl 10 µl	39149 39150
Histone H3.3S31ph antibody (pAb)	Raised against a peptide with phospho-serine 31 of human histone H3.3.	H	DB, WB	200 µl 10 µl	39637 39638
Histone H3K36ac antibody (pAb)	Raised against a peptide with acetyl-lysine 36 of human histone H3.	H, WR	ChIP, ChCh, ChSeq, DB, IF, WB	200 µl 10 µl	39379 39380
Histone H3K36me1 antibody (pAb)	Raised against a peptide with monomethyl-lysine 36 of human histone H3.	H, WR	DB, WB	100 µl 10 µl	61351 61352
Histone H3K36me2 antibody (mAb) (Clone MABI 0332)	Raised against a peptide with dimethyl-lysine 36 of human histone H3.	H, WR	ChIP, DB, IF, IP, TR-FRET, WB	100 µg	61019
Histone H3K36me2 antibody (pAb)	Raised against a peptide with dimethyl-lysine 36 of human histone H3. (Rabbit serum)	BY, H, WR	ChIP, ChCh, ChSeq, DB, IF, IP, WB	200 µl 10 µl	39255 39256
Histone H3K36me2 antibody (pAb)	Raised against a peptide with dimethyl-lysine 36 of human histone H3. (Purified rabbit IgG)	BY, H, WR	DB, WB	100 µg 10 µg	39891 39892
Histone H3K36me3 antibody (mAb) (Clone MABI 0333)	Raised against peptide with trimethyl-lysine 36 of human histone H3.	H, M, WR	ChIP, DB, IF, IP, WB	100 µg	61021
Histone H3K36me3 antibody (pAb)	Raised against peptide with trimethyl-lysine 36 of human histone H3.	H, M, WR	ChIP, ChCh, ChSeq, DB, IP, WB	100 µl 10 µl	61101 61102
Histone H3T45ph antibody (pAb)	Raised against a peptide with phospho-threonine 45 of human histone H3.	BY, H, WR	DB, WB	100 µl 10 µl	39737 39738
Histone H3K56ac antibody (mAb) (Clone I2.1)	Raised against peptide with acetyl-lysine 56 of yeast histone H3.	BY, FY, H	ChIP, DB	100 µg 10 µg	61061 61062
Histone H3K56ac antibody (pAb)	Raised against peptide with acetyl-lysine 56 of yeast histone H3.	BY, H	ChIP, ChCh, ChSeq, DB, WB	200 µl 10 µl	39281 39282
Histone H3K56me1 antibody (pAb)	Raised against peptide with monomethyl-lysine 56 of human histone H3.	H	DB, WB	200 µl 10 µl	39273 39274
Histone H3K56me2 antibody (pAb)	Raised against a peptide with dimethyl-lysine 56 of human histone H3.	H	DB, WB	200 µl 10 µl	39277 39278
Histone H3K79ac antibody (pAb)	Peptide containing acetyl-lysine 79 of human histone H3.	H, WR	ChIP, DB, WB	200 µl 10 µl	39565 39566

**Reactivity:** B = Bovine; BY = Budding Yeast; Ce = *C. elegans*; Dr = *Drosophila*; FY = Fission Yeast; Hm = Hamster; H = Human; Mk = Monkey; M = Mouse; NS = Not Species Specific; Rb = Rabbit; R = Rat; WR = Wide range predicted  
**Appl.:** ChIP = Chromatin IP; ChCh = ChIP-chip; ChSeq = ChIP-Seq; DB = Dot Blot; FC = Flow Cytometry; ICC = Immunocytochemistry; IF = Immunofluorescence; IHC = Immunohistochemistry; IP = Immunoprecipitation; MeDIP = Methyl-DNA IP; WB = Western Blot

Antibody	Immunogen	Reactivity	Applications	Format	Catalog No.
Histone H3K79me1 antibody (pAb)	Raised against a peptide with monomethyl-lysine 79 of human histone H3. (Rabbit serum)	H, WR	ChIP, DB, WB	200 µl	39145
				10 µl	39146
Histone H3K79me1 antibody (pAb)	Raised against a peptide with monomethyl-lysine 79 of human histone H3. (Purified rabbit IgG)	H, WR	ChIP, DB, WB	100 µg	39921
				10 µg	39922
Histone H3K79me2 antibody (pAb)	Raised against a peptide with dimethyl-lysine 79 of human histone H3. (Rabbit serum)	H, WR	ChIP, ChCh, ChSeq, DB, WB	200 µl	39143
				10 µl	39144
Histone H3K79me2 antibody (pAb)	Raised against a peptide with dimethyl-lysine 79 of human histone H3. (Purified rabbit IgG)	H, WR	ChIP, DB, WB	100 µg	39923
				10 µg	39924
Histone H3K122me1 antibody (pAb)	Raised against a peptide with monomethyl-lysine 122 of human H3.	H, WR	DB, WB	200 µl	39367
				10 µl	39368
Histone H3.X/Y antibody (mAb) (Clone 8H6-2111)	Raised against a peptide containing amino acids 9-20 of human histone H3.X.	H	IF, IHC, WB	100 µg	61161
				10 µg	61162
Histone H4 antibody (pAb)	Raised against full-length recombinant <i>Xenopus</i> histone H4. (Rabbit serum)	H, WR	WB	200 µl	39269
				10 µl	39270
Histone H4 antibody (pAb)	Raised against full-length recombinant <i>Xenopus</i> histone H4. (Purified rabbit IgG)	H, WR	WB	100 µg	61199
				10 µg	61200
Histone H4 antibody (pAb)	Raised against a peptide containing amino acids 43-54 of human histone H4.	H, WR	ChIP, IP, WB	100 µl	61299
				10 µl	61300
Histone H4ac (pan-acetyl) antibody (mAb) (Clone 3HH4-3H10)	Raised against a peptide containing amino acids 1- 24 of human histone H4 acetylated at lysines 5, 8, 12 and 16.	H, M, WR	ChIP, WB	100 µg	61337
				10 µg	61338
Histone H4ac (pan-acetyl) antibody (mAb)	Raised against a peptide containing amino acids 1- 24 of human histone H4 acetylated at lysines 5, 8, 12 and 16.	H, WR	ELISA, ICC, IF, IP, WB	100 µg	39967
Histone H4ac (pan-acetyl) antibody (pAb)	Raised against a peptide of <i>Tetrahymena</i> histone H2A acetylated at multiple lysines. (Purified rabbit IgG)	H, M, WR	ChIP, DB, IF, WB	100 µg	39925
				10 µg	39926
Histone H4ac (pan-acetyl) antibody (pAb)	Raised against a peptide of <i>Tetrahymena</i> histone H2A acetylated at multiple lysines. (Rabbit serum)	H, M, WR	ChIP, DB, IF, WB	200 µl	39243
				10 µl	39244
Histone H4ac (pan-acetyl) antibody (pAb)	Raised against a peptide of <i>Tetrahymena</i> hv1 acetylated at multiple lysines.	BY, H, WR	IF, WB	50 µg	39177
				10 µg	39227
Histone H4R3me2a (asymmetric) antibody (pAb)	Raised against a peptide with dimethyl-arginine 3 (asymmetric) of human histone H4.	H, WR	DB, IF, WB	200 µl	39705
				10 µl	39706
Histone H4R3me2s (symmetric) antibody (pAb)	Raised against a peptide with dimethyl-arginine 3 (symmetric) of human histone H4.	H, WR	DB, WB	100 µl	61187
				10 µl	61188
Histone H4K5ac antibody (pAb)	Raised against a peptide with acetyl-lysine 5 of human histone H4.	H, M, WR	ChIP, DB, IF, WB	200 µl	39169
				10 µl	39170
Histone H4K5ac antibody (pAb)	Raised against a peptide with acetyl-lysine 5 of human histone H4. (Rabbit serum)	H, M, WR	ChIP, DB, IF, WB	200 µl	39583
				10 µl	39584
Histone H4K5ac antibody (pAb)	Raised against a peptide with acetyl-lysine 5 of human histone H4. (Purified rabbit IgG)	H, M, WR	ChIP, DB, WB	100 µg	39699
				10 µg	39700

**Reactivity:** B = Bovine; BY = Budding Yeast; Ce = *C. elegans*; Dr = *Drosophila*; FY = Fission Yeast; Hm = Hamster; H = Human; Mk = Monkey; M = Mouse; NS = Not Species Specific; Rb = Rabbit; R = Rat; WR = Wide range predicted  
**Appl.:** ChIP = Chromatin IP; ChCh = ChIP-chip; ChSeq = ChIP-Seq; DB = Dot Blot; FC = Flow Cytometry; ICC = Immunocytochemistry; IF = Immunofluorescence; IHC = Immunohistochemistry; IP = Immunoprecipitation; MeDIP = Methyl-DNA IP; WB = Western Blot

Antibody	Immunogen	Reactivity	Applications	Format	Catalog No.
Histone H4K8ac antibody (pAb)	Raised against a peptide with acetyl-lysine 8 of human histone H4.	H, M, WR	ChIP, DB, WB	100 µl 10 µl	61103 61104
Histone H4K8ac antibody (pAb)	Raised against a peptide with acetyl-lysine 8 of human histone H4.	H, WR	WB	200 µl 10 µl	39171 39172
Histone H4K8K12K16 (pan-biotinylated) antibody (pAb)	Raised against peptide with biotinylated-lysine 12 of human histone H4.	H	DB	100 µl 10 µl	61393 61394
Histone H4K12ac antibody (pAb)	Raised against a peptide with acetyl-lysine 12 of human histone H4. (Rabbit serum)	BY, H, M, WR	ChIP, ChCh, ChSeq, DB, IF, WB	200 µl 10 µl	39165 39166
Histone H4K12ac antibody (pAb)	Raised against a peptide with acetyl-lysine 12 of human histone H4. (Purified rabbit IgG)	BY, H, M, WR	ChIP, DB, IF, WB	100 µg 10 µg	39927 39928
Histone H4K16ac antibody (pAb)	Raised against a peptide with acetyl-lysine 16 of human histone H4. (Rabbit serum)	BY, Dr, H, M, WR	ChIP, DB, IP, WB	200 µl 10 µl	39167 39168
Histone H4K16ac antibody (pAb)	Raised against a peptide with acetyl-lysine 16 of human histone H4. (Purified rabbit IgG)	BY, Dr, H, M, WR	ChIP, DB, WB	100 µg 10 µg	39929 39930
Histone H4H18ph antibody (pAb)	Raised against a peptide containing a 3-phosphohistidine analog at Histidine 18 of human Histone H4. (Rabbit serum)	H, WR	DB, WB	100 µl 10 µl	61411 61412
Histone H4H18ph antibody (pAb)	Raised against a peptide containing a 3-phosphohistidine analog at Histidine 18 of human Histone H4. (Purified rabbit IgG)	H, WR	DB, WB	100 µg 10 µg	61413 61414
Histone H4K20me1 antibody (mAb) (Clone 5E10-D8)	Raised against a peptide with monomethyl-lysine 20 of human histone H4.	H, WR	IF, WB	100 µg 10 µg	39727 39728
Histone H4K20me2 antibody (mAb)	Raised against a peptide with dimethyl-lysine 20 of human histone H4.	H, WR	WB	200 µl 10 µl	39539 39540
Histone H4K20me2 antibody (pAb)	Raised against a peptide with dimethyl-lysine 20 of human histone H4.	H, WR	ChIP, IF, WB	200 µl 10 µl	39173 39174
Histone H4K20me3 antibody (mAb) (Clone 6F8-D9)	Raised against a peptide with trimethyl-lysine 20 of human histone H4.	H, M, WR	ChIP, DB, WB	100 µg 10 µg	39671 39672
Histone H4K31me1 antibody (pAb)	Raised against a peptide with monomethyl-lysine 31 of human histone H4.	H, WR	DB, WB	200 µl 10 µl	39385 39386
HMG-1 antibody (pAb)	Raised against amino acids 167-182 of human HMG-1.	H	WB	200 µl 10 µl	39551 39552
HMG-2 antibody (pAb)	Raised against amino acids 166-181 of human HMG-2.	H	WB	100 µl	39029
HMGA1 antibody (pAb)	Raised against a peptide containing the N-terminal region of human HMGA1.	H	IF, WB	100 µl 10 µl	39615 39650
HMGA2 / HMGI-C antibody (pAb)	Raised against a peptide containing the N-terminal region of human HMGA2	H	WB	100 µl 10 µl	61041 61042
HMGNI antibody (pAb)	Raised against a peptide containing the C-terminal region of human HMGNI.	H	WB	100 µl 10 µl	39833 39834

**Reactivity:** B = Bovine; BY = Budding Yeast; Ce = *C. elegans*; Dr = *Drosophila*; FY = Fission Yeast; Hm = Hamster; H = Human; Mk = Monkey; M = Mouse; NS = Not Species Specific; Rb = Rabbit; R = Rat; WR = Wide range predicted  
**Appl.:** ChIP = Chromatin IP; ChCh = ChIP-chip; ChSeq = ChIP-Seq; DB = Dot Blot; FC = Flow Cytometry; ICC = Immunocytochemistry; IF = Immunofluorescence; IHC = Immunohistochemistry; IP = Immunoprecipitation; MeDIP = Methyl-DNA IP; WB = Western Blot



Antibody	Immunogen	Reactivity	Applications	Format	Catalog No.
Hmgn2 antibody (pAb)	Raised against a peptide within the N-terminal region of human Hmgn2.	H	WB	100 µl 10 µl	61353 61354
HNF-3α / FOXA1 antibody (mAb) (Clone 2F83)	Raised against a recombinant protein with amino acids 7-103 of rat HNF-3α / FOXA1.	H, M	IHC, WB	100 µg 10 µg	39837 39838
HNF-3β / FOXA2 antibody (pAb)	Raised against a recombinant protein with amino acids 7-86 of rat HNF-3β / FOXA2.	H	IHC, WB	100 µl 10 µl	39827 39828
HNF4A antibody (pAb)	Raised against a peptide containing the N-terminal region of human HNF4A.	H	WB	100 µl 10 µl	61189 61190
HOXA9 antibody (pAb)	Raised against a peptide containing the N-terminal region of human HOXA9.	H	WB	100 µl 10 µl	39825 39826
HPIα antibody (pAb)	Raised against a recombinant protein to full-length mouse HPIα.	H, M	WB	200 µl 10 µl	39295 39296
HPIα antibody (mAb) (Clone 2HP-1H5)	Raised against a recombinant protein with amino acids 67-119 of mouse HPIα.	H, M	ChIP, ELISA, ICC, IF, IHC	100 µg 10 µg	39977 39978
HPIβ antibody (mAb) (Clone 1MOD-1A9)	Raised against a recombinant mouse HPIβ.	H, M	ELISA, IF, IHC, IP, WB	100 µg 10 µg	39979 39980
HPIγ antibody (mAb) (Clone 2MOD-1G6)	Raised against a recombinant full-length mouse HPIγ.	H, M	ELISA, ICC, IF, IHC, IP, WB	100 µg 10 µg	39981 39982
HPI gamma phospho Ser93 antibody (pAb)	Raised against a peptide with phospho-serine 93 of human HPI gamma.	H	DB, WB	100 µl 10 µl	39655 39656
HSC70 / HSP7C antibody (mAb) (Clone 6E1)	Raised against full-length human HSC70 / HSP7C protein.	H	IF, IP, WB	100 µg 10 µg	61207 61208
HSP72 antibody (mAb) (Clone 3G7)	Raised against full-length human HSP72 protein.	H	IF, IP, WB	100 µg 10 µg	61209 61210
Ikaros antibody (mAb) (Clone 2A9)	Raised against the N-terminal half of mouse Ikaros.	M	WB	200 µg 10 µg	39355 39356
Ikaros antibody (pAb)	Raised against the N-terminal half of mouse Ikaros.	M	WB	200 µl 10 µl	39291 39292
IκBα antibody (mAb) (Clone 6A920)	Raised against amino acids 32-391 of recombinant human IκBα.	H, M	IP, WB	100 µg	40903
IκBα phospho Ser32,36 antibody (mAb) (Clone 39A1431)	Raised against a peptide with phospho-serine 32 and 36 of human IκBα.	H	WB	100 µg	40904
IKKα antibody (mAb) (Clone 14A231)	Raised against full-length human IKKα.	H, M	IP, WB	100 µg	40905
IKKβ antibody (mAb) (Clone 10AG2)	Raised against 6xHis-tagged, full-length human IKKβ.	H	WB	100 µg	40906
IKKβ antibody (mAb) (Clone 10A9B6)	Raised against 6xHis-tagged, full-length human IKKβ.	H	IP, WB	100 µg	40907
IKKγ antibody (mAb) (Clone 46B844)	Raised against full-length human IKKγ.	H	WB	100 µg	40908
IKKi/IKKε antibody (mAb) (Clone 72B587)	Raised against amino acids 175-188 of human IKKi/IKKε.	H, M, R	WB	100 µg	40950
IKKi/IKKε antibody (pAb)	Raised against amino acids 175-188, 525-540 & 567-580 of human IKKi/IKKε.	H	WB	100 µg	40957

**Reactivity:** B = Bovine; BY = Budding Yeast; Ce = *C. elegans*; Dr = *Drosophila*; FY = Fission Yeast; Hm = Hamster; H = Human; Mk = Monkey; M = Mouse; NS = Not Species Specific; Rb = Rabbit; R = Rat; WR = Wide range predicted  
**Appl.:** ChIP = Chromatin IP; ChCh = ChIP-chip; ChSeq = ChIP-Seq; DB = Dot Blot; FC = Flow Cytometry; ICC = Immunocytochemistry; IF = Immunofluorescence; IHC = Immunohistochemistry; IP = Immunoprecipitation; MeDIP = Methyl-DNA IP; WB = Western Blot

Antibody	Immunogen	Reactivity	Applications	Format	Catalog No.
INCENP antibody (mAb)	Raised against amino acids 231-398 of recombinant human INCENP.	H, M, WR	IF	200 µg 10 µg	39259 39260
<b>NEW</b> INGI antibody (mAb) (Clone Cab1)	Raised against a peptide with amino acids 67-279 of human INGI.	H	IF, WB	100 µg 10 µg	61459 61460
INHAT-1/TAF-1α/TAF-1β antibody (pAb)	Peptide mix of amino acids 66-8 &, 135-151 of human INHAT-1/TAF-1α/TAF-1β.	H, M, R	WB	200 µl	39202
INHAT-2/pp32 antibody (pAb)	Peptide mix of amino acids 87-103 and 231-246 of human INHAT-2/pp32.	H	WB	200 µl	39213
IRAK-1 antibody (pAb)	Raised against amino acids 700-712 of human IRAK-1.	H	WB	100 µg	40910
IRAK-2 antibody (pAb)	Raised against amino acids 546-564 of human IRAK-2.	H	WB	100 µg	40912
IRF-2 antibody (pAb)	Raised against a peptide within the C-terminal region of human IRF-2.	H	WB	100 µl 10 µl	61281 61282
IRF-3 antibody (pAb)	Raised against amino acids 306-312 of human IRF-3.	H	WB	200 µl 10 µl	39371 39372
IRF-3 antibody (pAb)	Raised against full-length human IRF-3.	B, H	ChIP, IF, WB	100 µl	39033
<b>NEW</b> IRF-4 antibody (pAb)	Raised against a peptide within the C-terminal region of human IRF-4.	H	WB	100 µl 10 µl	61511 61512
IRF-5 antibody (pAb)	Raised against a peptide containing the N-terminal region of human IRF-5.	H	WB	100 µl 10 µl	61269 61270
JARID1C antibody (pAb)	Raised against a peptide to the C-terminus of human JARID1C.	H, M	ChIP, IP, WB	200 µl 10 µl	39229 39230
Jhd2 antibody (pAb)	Raised against a peptide to the C-terminus of <i>S. cerevisiae</i> Jhd2.	BY	WB	200 µl 10 µl	39263 39264
JMJD2A antibody (mAb) (Clone NI54/32)	Raised against a recombinant protein containing amino acids 586-674 of human JMJD2A.	H, M	WB	100 µg 10 µg	39815 39816
JMJD2B / KDM4B antibody (pAb)	Raised against a peptide containing the C-terminal region of human JMJD2B.	H	WB	100 µl 10 µl	61221 61222
JMJD2D antibody (pAb)	Raised against amino acids 337-359 of human JMJD2D.	H	WB	200 µl 10 µl	39247 39248
JMJD2F antibody (pAb)	Raised against a peptide to the C-terminus of human JMJD2F.	H	WB	200 µl 10 µl	39257 39258
JMJD3 / KDM6B antibody (mAb) (Clone 67-A2)	Raised against a recombinant protein containing amino acids 1028-1684 of human JMJD3 / KDM6B.	H, M	WB	100 µg 10 µg	61387 61388
<b>NEW</b> JMJD6 antibody (pAb)	Raised against a peptide containing the N-terminal region of human JMJD6.	H	WB	100 µl 10 µl	61493 61494
JunB antibody (pAb)	Raised against amino acids 28-42 of human JunB.	H	WB	200 µl 10 µl	39549 39550
c-Jun antibody (pAb)	Raised against amino acids 20-37 of human c-Jun.	H, M	ChIP, EMSA, IF	100 µg	39309

**Reactivity:** B = Bovine; BY = Budding Yeast; Ce = *C. elegans*; Dr = *Drosophila*; FY = Fission Yeast; Hm = Hamster; H = Human; Mk = Monkey; M = Mouse; NS = Not Species Specific; Rb = Rabbit; R = Rat; WR = Wide range predicted  
**App.:** ChIP = Chromatin IP; ChCh = ChIP-chip; ChSeq = ChIP-Seq; DB = Dot Blot; FC = Flow Cytometry; ICC = Immunocytochemistry; IF = Immunofluorescence; IHC = Immunohistochemistry; IP = Immunoprecipitation; MeDIP = Methyl-DNA IP; WB = Western Blot

Antibody	Immunogen	Reactivity	Applications	Format	Catalog No.
JunD antibody (pAb)	Raised against a peptide containing the N-terminal region of human JunD.	H	WB	100 µl 10 µl	61403 61404
Kaiso antibody (mAb) (Clone 6F1D)	Raised against amino acids 103-499 of His-tagged mouse Kaiso.	M	WB	200 µg 10 µg	39365 39366
Kat6a antibody (mAb) (Clone 2MOZ-2D4)	Raised against a peptide containing amino acids 856-869 of mouse Kat6a.	H, M	ChIP, IP	100 µg 10 µg	61327 61328
<b>NEW</b> KDM1B / LSD2 antibody (pAb)	Raised against a peptide with the N-terminal region of human KDM1B / LSD2.	M	WB	100 µl 10 µl	61457 61458
Ki-67 antibody (pAb)	Raised against a peptide containing the N-terminal region of human Ki-67.	H	WB	100 µl 10 µl	39799 39800
KLF4 antibody (pAb)	Raised against recombinant full-length human KLF4.	H, WR	WB	100 µl 10 µl	39745 39746
KLF5 antibody (pAb)	Raised against a peptide derived from the N-terminus of mouse KLF5 (Krueppel-like factor 5).	H, M	WB	100 µl 10 µl	61099 61100
KLF6 antibody (mAb) (Clone 2A2)	Raised against a recombinant protein containing amino acids 28-199 of human KLF6 (Krueppel-like factor 6).	H	IHC, WB	100 µg 10 µg	61297 61298
KLF6 antibody (pAb)	Raised against a peptide derived from the internal region of human KLF6 (Krueppel-like factor 6).	M	WB	100 µg 10 µg	61243 61244
TIEG1 / KLF10 antibody (pAb)	Raised against a peptide derived from human TIEG1 / KLF10.	H	WB	100 µl 10 µl	61117 61118
L3MBTL1 antibody (pAb)	Raised against a His-tagged fusion protein containing amino acids 1-215 of human L3MBTL2.	H, WR	ChIP, IP, WB	200 µl 10 µl	39182 39183
L3MBTL2 antibody (pAb)	Raised against a His-tagged fusion protein containing amino acids 1-230 of human L3MBTL2.	H	ChIP, IP, WB	200 µl 10 µl	39569 39570
Lamin A, mature antibody (mAb) (Clone 4A4)	Raised against a peptide within the C-terminal region of human Lamin A.	H	IF, IP, WB	100 µg 10 µg	39961 39962
Lamin A/C antibody (mAb) (Clone 3A6-4C11)	Raised against amino acids 430-545 of recombinant human Lamin A.	Hm, H, Mk, M, R	IF, IP, WB	200 µg 10 µg	39287 39288
Lamin A/C R453W antibody (mAb) (Clone 12A-2F5)	Raised against a peptide with amino acids 449-457 of human Lamin A/C and containing the R453W substitution.	H	IF, IP, WB	100 µg 10 µg	39959 39960
Lamin A/C R482W antibody (mAb) (Clone 5H8-B4)	Raised against recombinant protein containing amino acids 430-545 of human Lamin A/C containing the R482W substitution.	H	IF, IP, WB	100 µg 10 µg	39963 39964
Lamin B1 antibody (pAb)	Raised against full-length human Lamin B1.	H, M	WB	100 µl	39095
LAP2 alpha antibody (mAb) (Clone 3A3)	Raised against a peptide with the C-terminus of human LAP2 alpha.	H	WB	200 µl 10 µl	39267 39268
LexA DNA-binding Domain antibody (pAb)	Raised against amino acids 1-222 of recombinant <i>E. coli</i> LexA.	NS	IP, WB	200 µl 10 µl	39184 39185
LIG1 antibody (pAb)	Raised against amino acids 51-68 of human LIG1.	H	WB	200 µl	39214

**Reactivity:** B = Bovine; BY = Budding Yeast; Ce = *C. elegans*; Dr = *Drosophila*; FY = Fission Yeast; Hm = Hamster; H = Human; Mk = Monkey; M = Mouse; NS = Not Species Specific; Rb = Rabbit; R = Rat; WR = Wide range predicted  
**Appl.:** ChIP = Chromatin IP; ChCh = ChIP-chip; ChSeq = ChIP-Seq; DB = Dot Blot; FC = Flow Cytometry; ICC = Immunocytochemistry; IF = Immunofluorescence; IHC = Immunohistochemistry; IP = Immunoprecipitation; MeDIP = Methyl-DNA IP; WB = Western Blot

Antibody	Immunogen	Reactivity	Applications	Format	Catalog No.
LIN28A antibody (pAb)	Raised against a peptide within the C-terminal region of human LIN28A.	H	WB	100 µl 10 µl	61191 61192
Linin/ML-IAP antibody (mAb) (Clone 88C570)	Raised against GST-tagged human Linin/ML-IAP.	H	WB	100 µg	40958
LSD1 / KDM1A antibody (pAb)	Raised against full-length recombinant human LSD1 protein.	H, M, WR	ChIP, ChCh, ChSeq, IP, WB	200 µl 10 µl	39186 39187
LXR-α antibody (pAb)	Raised against a peptide containing the N-terminal region of human LXR-α.	H, M	ChIP, ChCh, ChSeq, IP, WB	100 µl 10 µl	61175 61176
LXR-β antibody (pAb)	Raised against a peptide containing the N-terminal region of human LXR-β.	H	ChIP, ChCh, ChSeq, IP, WB	100 µl 10 µl	61177 61178
MAD1 antibody (mAb) (Clone 9B10)	Raised against amino acids 331-718 of mouse MAD1.	H, M	IF, WB	100 µg 10 µg	39659 39660
MAD2L1 antibody (mAb) (Clone 17D10)	Raised against full-length recombinant human MAD2L1.	H, M, WR	WB	200 µg 10 µg	39399 39400
MALT1 antibody (mAb)	Raised against amino acids 701-808 of mouse MALT1 recombinant protein.	H	WB	200 µg 10 µg	39395 39396
MASH1 antibody (mAb) (Clone 24B7.2D11.1)	Raised against full-length recombinant rat MASH1.	M, R	IHC, WB	100 µg 10 µg	61271 61272
Maz antibody (mAb) (Clone 133)	Raised against full-length recombinant human Maz.	H	ChIP, EMSA, IF, IHC, IP, WB	100 µg 10 µg	39935 39936
MBD1 antibody (mAb) (Clone 100B272.1)	Raised against a peptide corresponding to human MBD1.	H	WB	100 µg	39215
MBD1 antibody (pAb)	Raised against a peptide within the C-terminal region of human MBD1.	H	WB	100 µl 10 µl	39857 39858
MBD2 antibody (pAb)	Raised against a peptide corresponding to human MBD2.	H	WB	200 µl 10 µl	39547 39548
MBD3 antibody (mAb) (Clone 106B691)	Raised against a peptide corresponding to human MBD3.	H	WB	100 µg	39216
MBD4 antibody (pAb)	Peptide mixture of amino acids 268-282 and 337-352 of human MBD4.	H	WB	100 µg	39217
MeCP2 antibody (mAb) (Clone 4B4)	Raised against full-length rat MeCP2 protein.	H, M, R	ChIP, IF, IHC, IP, WB	100 µg 10 µg	61285 61286
MeCP2 antibody (mAb) (Clone 4H7)	Raised against full-length rat MeCP2 protein.	H, M, R	ChIP, IF, IHC, IP, WB	100 µg 10 µg	61291 61292
MeCP2 antibody (pAb)	Peptide mixture of amino acids 11-25 and 181-195 of human MeCP2.	H	WB	100 µg	39218
MeCP2 antibody (pAb)	Raised against the N-terminal 320 amino acids of recombinant mouse MeCP2.	H, M	WB	200 µl 10 µl	39188 39189
MeCP2 phospho Ser80 antibody (pAb)	Raised against a peptide with phospho-serine 80 of mouse MeCP2.	H, R	IHC, WB	100 µl 10 µl	39733 39734
MED1 antibody (pAb)	Raised against a peptide to the C-terminal region of human MED1.	H	WB	100 µl 10 µl	61065 61066

**Reactivity:** B = Bovine; BY = Budding Yeast; Ce = *C. elegans*; Dr = *Drosophila*; FY = Fission Yeast; Hm = Hamster; H = Human; Mk = Monkey; M = Mouse; NS = Not Species Specific; Rb = Rabbit; R = Rat; WR = Wide range predicted  
**Appl.:** ChIP = Chromatin IP; ChCh = ChIP-chip; ChSeq = ChIP-Seq; DB = Dot Blot; FC = Flow Cytometry; ICC = Immunocytochemistry; IF = Immunofluorescence; IHC = Immunohistochemistry; IP = Immunoprecipitation; MeDIP = Methyl-DNA IP; WB = Western Blot

Antibody	Immunogen	Reactivity	Applications	Format	Catalog No.
MEIS1/2/3 antibody (mAb) (Clone 9.2.7)	Raised against a peptide containing amino acids 50-390 of mouse MEIS1.	H, M	ChIP, EMSA, IHC, IP, WB	100 µg 10 µg	39795 39796
Menin antibody (pAb)	Raised against a peptide to the C-terminal region of human Menin.	H	ChIP, ChCh, ChSeq, WB	100 µl 10 µl	61005 61006
MEP50 antibody (pAb)	Raised against His-tagged, full-length human MEP50.	H, WR	WB	200 µl 10 µl	39190 39191
MGMT antibody (pAb)	Raised against a peptide to the C-terminal region of human MGMT.	H	WB	100 µl 10 µl	39951 39952
<b>NEW</b> Mi-2 antibody (mAb) (Clone 4D8)	Raised against a peptide corresponding to human Mi-2 beta.	Dr	IP, WB	100 µg 10 µg	61463 61464
Mi-2 beta antibody (mAb) (Clone 3F2/4)	Raised against a peptide corresponding to human Mi-2 beta.	H, M	IP, WB	100 µg 10 µg	39695 39696
Mi-2 beta antibody (pAb)	Raised against amino acids 22-155 of recombinant mouse Mi-2 beta.	H, M	IF, WB	200 µl 10 µl	39289 39290
Mili / PiwiL2 antibody (mAb) (Clone 17.8)	Raised against full-length, recombinant mouse Mili / PiwiL2 protein.	M	IF, IHC, IP, WB	100 µg 10 µg	61143 61144
MITF antibody (mAb)	Raised against an N-terminal fragment of human MITF.	H, M	ChIP, ChCh, ChSeq, EMSA, IF, IHC, IP, WB	100 µg 10 µg	39789 39790
MLH-1 antibody (mAb) (Clone 164C819)	Raised against a peptide corresponding to human MLH-1.	H	WB	100 µg	39219
MLL / HRX antibody (mAb) (Clone N4.4)	Raised against a recombinant protein containing amino acids 161-356 of mouse MLL.	H, M	ChIP, IP, WB	100 µg 10 µg	39829 39830
MLL / HRX antibody (pAb)	Raised against a recombinant protein containing amino acids 2829-2883 of human MLL.	H, M	ChIP, IP, WB	100 µg 10 µg	61295 61296
<b>NEW</b> MLL5 / KMT2E antibody (pAb)	Raised against a peptide to human MLL5 / KMT2E.	H, M	WB	100 µl 10 µl	61447 61448
MMSET / WHSC1 antibody (mAb) (Clone 29D1)	Raised against a recombinant protein containing amino acids 1-647 of human MMSET-1.	H	ChIP, ChCh, ChSeq, IF, IP, WB	100 µg 10 µg	39879 39880
MOF / MYST1 antibody (pAb)	Raised against a peptide to the N-terminal region of human MOF / MYST1 (MYST histone acetyltransferase 1).	H	WB	100 µl 10 µl	61245 61246
MOZ antibody (pAb)	Raised against a peptide within the N-terminal half of MOZ.	H	WB	100 µl 10 µl	39867 39868
MPP8 antibody (mAb) (Clone N119/44)	Raised against a recombinant protein containing amino acids 50-120 of human MPP8.	H	ICC, WB	100 µg 10 µg	39819 39820
MRE11 antibody (pAb)	Raised against a peptide corresponding to human MRE11.	H	WB	100 µg	39220
MRG15 antibody (pAb)	Raised against a peptide to the C-terminus of human MRG15.	H, WR	WB	200 µl 10 µl	39361 39362

**Reactivity:** B = Bovine; BY = Budding Yeast; Ce = *C. elegans*; Dr = *Drosophila*; FY = Fission Yeast; Hm = Hamster; H = Human; Mk = Monkey; M = Mouse; NS = Not Species Specific; Rb = Rabbit; R = Rat; WR = Wide range predicted  
**Appl.:** ChIP = Chromatin IP; ChCh = ChIP-chip; ChSeq = ChIP-Seq; DB = Dot Blot; FC = Flow Cytometry; ICC = Immunocytochemistry; IF = Immunofluorescence; IHC = Immunohistochemistry; IP = Immunoprecipitation; MeDIP = Methyl-DNA IP; WB = Western Blot



Antibody	Immunogen	Reactivity	Applications	Format	Catalog No.
MTA2 antibody (pAb)	Raised against a peptide to the C-terminus of human MTA2.	H, M, WR	WB	200 µl 10 µl	39359 39360
Myc Tag antibody (mAb) (Clone 4E12)	Raised against a peptide to amino acids 410-419 of human c-Myc.	WR	WB	200 µg 10 µg	39279 39280
c-Myc antibody (mAb) (Clone 6A10)	Raised against a recombinant protein containing amino acids 1-262 of human c-Myc.	H	EMSA, IP, WB	100 µg 10 µg	61075 61076
c-Myc antibody (mAb) (61 kDa form) (Clone 9E11)	Raised against amino acids 408-420 of human c-Myc; 61 kDa form.	H	WB	100 µl	39502
c-Myc antibody (pAb) (65 kDa form)	Raised against amino acids 9-22 of human c-Myc; detects 65 kDa form.	H, Mk, M	WB	100 µl	39012
N-Myc antibody (pAb)	Raised against a peptide within the C-terminal region of human N-Myc.	H	WB	100 µl 10 µl	61185 61186
MyD88 antibody (pAb)	Raised against amino acids 233-248 of human MyD88.	H	WB	100 µg	40914
Myf-5 antibody (mAb) (Clone 1E2G4)	Raised against a peptide derived from mouse Myf-5.	M	IF, WB	100 µg 10 µg	39801 39802
MyoD antibody (mAb) (Clone 5F11)	Raised against full-length, recombinant mouse MyoD protein.	H, M	IF, WB	100 µg 10 µg	39991 39992
NAK1/Nur77 antibody (pAb)	Raised against amino acids 251-266 of human NAK1/Nur77.	H, M	WB	200 µl	40982
Nanog antibody (pAb)	Raised against a peptide within the N-terminal region of mouse Nanog.	M	WB	100 µl 10 µl	61419 61420
Nap1 antibody (pAb)	Raised against full-length, His-tagged <i>Drosophila</i> Nap1 protein.	Dr	IP, WB	100 µl	39577
NAPIL1 antibody (pAb)	Raised against a peptide within the N-terminal region of NAPIL1.	H	WB	100 µl 10 µl	39841 39842
NBS1 antibody (pAb)	Raised against a peptide to the C-terminus of human NBS1.	H	WB	200 µl 10 µl	39373 39374
NcoA4 / ELE1 antibody (pAb)	Raised against a peptide to the C-terminal region of human NCoA4.	H	WB	100 µl 10 µl	39895 39896
NF-1A antibody (pAb)	Raised against amino acids 478-492 of human NF-1A.	H	WB	200 µl 10 µl	39397 39398
NF-1B2 antibody (pAb)	Raised against amino acids 402-415 of human NF-1B2.	H, R	WB	100 µg	39091
NFκB p50 antibody (pAb)	Raised against amino acids 363-376 of human NFκB p50.	H, M	WB	200 µl	39037
NFκB p65 antibody (mAb) (Clone 112A1021)	Raised against amino acids 526-539 of human NFκB p65.	H, M	FC, WB	100 µg	40916
NFκB p65 antibody (pAb)	Raised against a peptide immunogen to N-terminal NFκB p65.	H	WB	200 µl 10 µl	39283 39284
NFκB p65 antibody (pAb)	Raised against a peptide to the C-terminus of human NFκB p65.	H	ChIP, WB	200 µl 10 µl	39369 39370
NFκB p65 phospho Ser529 antibody (pAb)	Raised against a peptide containing phospho-serine 529 of human NFκB p65.	H	DB, WB	100 µl 10 µl	39691 39692

**Reactivity:** B = Bovine; BY = Budding Yeast; Ce = *C. elegans*; Dr = *Drosophila*; FY = Fission Yeast; Hm = Hamster; H = Human; Mk = Monkey; M = Mouse; NS = Not Species Specific; Rb = Rabbit; R = Rat; WR = Wide range predicted  
**Appl.:** ChIP = Chromatin IP; ChCh = ChIP-chip; ChSeq = ChIP-Seq; DB = Dot Blot; FC = Flow Cytometry; ICC = Immunocytochemistry; IF = Immunofluorescence; IHC = Immunohistochemistry; IP = Immunoprecipitation; MeDIP = Methyl-DNA IP; WB = Western Blot

Antibody	Immunogen	Reactivity	Applications	Format	Catalog No.
NFκB p65 phospho Ser536 antibody (pAb)	Raised against a peptide containing phospho-serine 536 of human NFκB p65.	H	DB, WB	100 μl 10 μl	39675 39676
NFκB p100 antibody (pAb)	Raised against a peptide to the C-terminus of human NFκB p100.	H	WB	100 μl 10 μl	39687 39688
NKX2.5 antibody (pAb)	Raised against a peptide within the N-terminal region of human NKX2.5 (NK2 homeobox 5).	H	WB	100 μl 10 μl	61267 61268
NonO antibody (pAb)	Raised against a peptide to the C-terminus of human NonO.	H	WB	100 μg 10 μg	61247 61248
Notch1 antibody (mAb) (Clone ICN 5B5)	Raised against recombinant protein corresponding to the intracellular domain of human Notch1 protein.	H, R	WB	100 μg 10 μg	61147 61148
Notch3 antibody (mAb) (Clone NIZ 8G5)	Raised against recombinant protein corresponding to the intracytoplasmic portion of human Notch1 protein.	H	WB	100 μg 10 μg	61149 61150
NR2C2 antibody (pAb)	Raised against a peptide within the N-terminal region of human NR2C2.	H	WB	100 μl 10 μl	61279 61280
NR2F2 / COUP2 antibody (pAb)	Raised against a peptide within the N-terminal region of human NR2F2.	H	ChIP, ChCh, ChSeq, WB	100 μl 10 μl	61213 61214
Nucleolin antibody (mAb) (Clone 3G4B20)	Raised against a salt-extracted nuclear matrix preparation from MDCK cells.	H, M, WR	IF, WB	200 μl 10 μl	39541 39542
Nucleophosmin antibody (pAb)	Raised against a peptide within the C-terminal region of human nucleophosmin.	H	WB	100 μl 10 μl	39849 39850
<b>NEW</b> O-GlcNAc antibody (mAb) (Clone CTD110.6)	Raised against amino acids 20-37 of human Osteoprotegerin (OPG).	NS	IP, WB	100 μg 10 μg	61453 61454
Oct-4 antibody (pAb)	Raised against a peptide derived from human Oct-4.	H	WB	100 μl 10 μl	39811 39812
OGA/O-GlcNAcase antibody (pAb)	Raised against a recombinant protein containing the N-terminal region of human OGA.	H	WB	100 μl 10 μl	61425 61426
OGT/O-GlcNAc transferase antibody (pAb)	Raised against a recombinant protein containing the N-terminal region of human OGT.	H	ChIP, ChCh, ChSeq, WB	100 μl 10 μl	61355 61356
Osteoprotegerin (OPG) antibody (mAb) (Clone 98A1071)	Raised against amino acids 20-37 of human Osteoprotegerin (OPG).	H	WB	100 μg	40938
p53 antibody (mAb) (Clone DO1)	Raised against full-length recombinant human p53 protein.	H	IP, WB	200 μg 10 μg	39553 39554
p53 antibody (pAb)	Raised against amino acids 367-381 of human p53.	H, M	ChIP, EMSA	17 rxns	39334
p63 antibody (mAb) (Clone 87C553)	Raised against a peptide corresponding to human p63.	H	WB	100 μg	40974
p63 antibody (pAb)	Raised against a recombinant full-length human p63.	H, M	ChIP, IF, WB	100 μl 10 μl	39739 39740
p73 antibody (mAb) (Clone 5B429)	Raised against full-length human p73.	H	WB	100 μg	40972
p73ΔN antibody (mAb) (Clone 38C674)	Raised against amino acids 2-13 of human p73ΔN.	H	WB	100 μg	40973

**Reactivity:** B = Bovine; BY = Budding Yeast; Ce = *C. elegans*; Dr = *Drosophila*; FY = Fission Yeast; Hm = Hamster; H = Human; Mk = Monkey; M = Mouse; NS = Not Species Specific; Rb = Rabbit; R = Rat; WR = Wide range predicted  
**Appl.:** ChIP = Chromatin IP; ChCh = ChIP-chip; ChSeq = ChIP-Seq; DB = Dot Blot; FC = Flow Cytometry; ICC = Immunocytochemistry; IF = Immunofluorescence; IHC = Immunohistochemistry; IP = Immunoprecipitation; MeDIP = Methyl-DNA IP; WB = Western Blot

Antibody	Immunogen	Reactivity	Applications	Format	Catalog No.
p300 antibody (mAb) (Clone NM11)	Raised against full-length p300 purified from human 293 cells.	H	ChIP, ChCh, ChSeq, IF, IP, WB	100 µg 10 µg	61401 61402
PARP-1 N-terminal antibody (pAb)	Raised against the His-tagged, N-terminal half of human PARP-1.	H	ChIP, IHC, IP, WB	200 µl 10 µl	39559 39560
PARP-1 C-terminal antibody (pAb)	Raised against the His-tagged, C-terminal half of human PARP-1.	H	ChIP, IHC, IP, WB	200 µl 10 µl	39561 39562
PARP-2 antibody (pAb)	Raised against a recombinant C-terminal region of human PARP-2.	H	ChIP, IP, WB	100 µl 10 µl	39743 39744
PAX7 antibody (mAb) (Clone 2F12H4)	Raised against a peptide derived from mouse Pax-7.	M	IF, WB	100 µg 10 µg	39803 39804
PAX9 antibody (mAb) (Clone 7C2)	Raised against recombinant protein containing amino acids 263-342 of mouse PAX9.	H	IHC, IP, WB	100 µg 10 µg	61077 61078
PBRM1 antibody (pAb)	Raised against a peptide within the N-terminal region of human PBRM1.	H	WB	100 µl 10 µl	61381 61382
PBX, long form antibody (mAb) (Clone 359.19)	Raised against a recombinant protein containing amino acids 319-430 of human PBX1A.	H	WB	100 µg 10 µg	61151 61152
PBX1b antibody (mAb) (Clone CT 41.1)	Raised against a recombinant protein containing amino acids 319-347 of human PBX1b.	H	ChIP, IHC, IP, WB	100 µg 10 µg	61165 61166
PBX2 antibody (mAb) (Clone 2.1)	Raised against a recombinant protein containing amino acids 308-430 of human PBX2.	H	IHC, WB	100 µg 10 µg	61155 61156
PCL2 antibody (mAb) (Clone 3A9)	Raised against a recombinant protein containing amino acids 103-327 of mouse PCL2.	H	WB	100 µg 10 µg	61153 61154
PCNA antibody (mAb) (Clone 16D10)	Raised against full-length recombinant human PCNA.	H	IF, IP, WB	100 µg 10 µg	61079 61080
PDX1 antibody (pAb)	Raised against a peptide within the N-terminal region region of human PDX1.	H	WB	100 µl 10 µl	61289 61290
PELPI antibody (pAb)	Raised against a peptide within the internal region of human PELP1.	H	WB	100 µl 10 µl	61263 61264
PGC1-β antibody (pAb)	Raised against a peptide within the N-terminal region of human PGC1-β.	H	WB	100 µl 10 µl	39859 39860
PHB / Prohibitin antibody (pAb)	Raised against a peptide within the N-terminal region of human PHB.	H	WB	100 µl 10 µl	61217 61218
Phc1 antibody (mAb) (Clone 6-1-3)	Raised against full-length, recombinant mouse Phc1.	H	IF, IP, WB	100 µg 10 µg	39723 39724
Phc2 antibody (mAb)	Raised against a recombinant fragment of human Phc2.	H, M	ChIP, IF, IP	100 µg 10 µg	39661 39662
PHF8 antibody (pAb)	Raised against a peptide derived from human PHF8.	H	WB	100 µl 10 µl	39711 39712

**Reactivity:** B = Bovine; BY = Budding Yeast; Ce = *C. elegans*; Dr = *Drosophila*; FY = Fission Yeast; Hm = Hamster; H = Human; Mk = Monkey; M = Mouse; NS = Not Species Specific; Rb = Rabbit; R = Rat; WR = Wide range predicted  
**Appl.:** ChIP = Chromatin IP; ChCh = ChIP-chip; ChSeq = ChIP-Seq; DB = Dot Blot; FC = Flow Cytometry; ICC = Immunocytochemistry; IF = Immunofluorescence; IHC = Immunohistochemistry; IP = Immunoprecipitation; MeDIP = Methyl-DNA IP; WB = Western Blot

Antibody	Immunogen	Reactivity	Applications	Format	Catalog No.
PHF20 antibody (pAb)	Raised against a peptide derived from human PHF20.	H	WB	100 µl 10 µl	61123 61124
PIM2 antibody (mAb) (Clone CHU61)	Raised against recombinant human PIM2 protein.	H	IHC, IP, WB	100 µg 10 µg	61159 61160
PITX2 antibody (pAb)	Raised against a peptide within the N-terminal region of human PITX2.	H	WB	100 µl 10 µl	61303 61304
PKM2 antibody (pAb)	Raised against a peptide to the C-terminal region of human PKM2.	H	WB	100 µl 10 µl	61423 61424
PLZF antibody (mAb) (Clone 2A9)	Raised against full-length, recombinant mouse PLZF protein with a GST tag.	H, M	ChIP, IF, WB	100 µg 10 µg	39987 39988
PML antibody (mAb) (Clone 36.1-104)	Raised against amino acids 1-581 of mouse PML.	M	IF, IP, WB	100 µg 10 µg	39773 39774
PMS2 antibody (mAb) (Clone 163C1251)	Raised against amino acids 623-639 of human PMS2.	H, M	WB	100 µg	39221
PP2A antibody (pAb)	Raised against amino acids 288-303 of human PP2A.	H, M, R, WR	ChIP, IP, WB	200 µl 10 µl	39192 39193
PPAR-γ antibody (mAb) (Clone 3PP-1H4)	Raised against a peptide within the N-terminal region of human PPAR-γ1 and γ2.	H	IF, WB	100 µg 10 µg	61025 61026
Progesterone Receptor antibody (mAb) (Clone 6A)	Raised against a peptide to the C-terminus of human Progesterone Receptor.	H	ChIP, IF, IHC, WB	100 µg 10 µg	61023 61024
PRDM1 / BLIMP1 antibody (mAb) (Clone ROS195)	Raised against full-length, recombinant human PRDM1 / BLIMP1 protein.	H	FC, IHC, IP, WB	100 µg 10 µg	61167 61168
<b>NEW</b> PRMT2 antibody (pAb)	Raised against a peptide within the N-terminal region of human PRMT2.	H	WB	100 µl 10 µl	61491 61492
PRMT5 antibody (pAb)	Raised against a peptide within the N-terminal region of human PRMT5.	H	WB	100 µl 10 µl	61001 61002
PRMT6 antibody (pAb)	Raised against a peptide within the N-terminal region of human PRMT6.	H	WB	100 µl 10 µl	61003 61004
Progerin antibody (mAb) (Clone 13A4)	Raised against a peptide with amino acids 604-611 of human Progerin.	H	IF, IP, WB	100 µg 10 µg	39965 39966
Prox1 antibody (mAb) (Clone 4G10)	Raised against a recombinant protein with amino acids 547-737 of human Prox1.	H	WB	100 µg 10 µg	61091 61092
Prox1 antibody (mAb) (Clone 5G10)	Raised against a recombinant protein with amino acids 547-737 of human Prox1.	H	IF, IHC	100 µg 10 µg	61093 61094
PXR antibody (pAb)	Raised against a peptide with amino acids 51-71 of human PXR.	H	WB	200 µl 10 µl	39589 39590
Rad1 antibody (pAb)	Raised against amino acids 133-148 of human Rad1.	H	WB	100 µg	40978
Rad17 phospho Ser647 antibody (pAb)	Raised against a peptide with phospho-serine 647 of mouse Rad17.	H, R	IF, WB	100 µg	39222
Rad18 antibody (mAb) (Clone 79B1048)	Raised against amino acids 402-414 of human Rad18.	H	WB	100 µg	40979

**Reactivity:** B = Bovine; BY = Budding Yeast; Ce = *C. elegans*; Dr = *Drosophila*; FY = Fission Yeast; Hm = Hamster; H = Human; Mk = Monkey; M = Mouse; NS = Not Species Specific; Rb = Rabbit; R = Rat; WR = Wide range predicted  
**Appl.:** ChIP = Chromatin IP; ChCh = ChIP-chip; ChSeq = ChIP-Seq; DB = Dot Blot; FC = Flow Cytometry; ICC = Immunocytochemistry; IF = Immunofluorescence; IHC = Immunohistochemistry; IP = Immunoprecipitation; MeDIP = Methyl-DNA IP; WB = Western Blot

Antibody	Immunogen	Reactivity	Applications	Format	Catalog No.
Rad21 antibody (mAb) (Clone 52A311)	Recombinant protein from the N-terminal half of mouse Rad21.	H, M	WB	200 µg 10 µg	39383 39384
Rad51 antibody (pAb)	Raised against full-length human Rad51 expressed in <i>E. coli</i> .	H	IF, IP, WB	200 µg 10 µg	39194 39195
Rad52 antibody (pAb)	Raised against full-length human Rad52 expressed in <i>E. coli</i> .	H	IF, IHC	200 µg 10 µg	39196 39197
RANK antibody (mAb) (Clone 9A725)	Raised against amino acids 326-616 of GST-tagged, human RANK.	H	WB	100 µg	40917
RAP1 / TERF2IP antibody (mAb) (Clone 4C8)	Raised against full-length human RAP1 / TERF2IP.	H	WB	100 µg 10 µg	61235 61236
RAP1 / TERF2IP antibody (pAb)	Raised against a peptide within human RAP1 / TERF2IP.	H	WB	100 µl 10 µl	61069 61070
RAR-α antibody (mAb) (Clone 9α-9A6)	Raised against recombinant protein with amino acids 420-443 of human RAR-α.	H, M	ELISA, EMSA, ICC, IHC, IP, WB	100 µg 10 µg	39971 39972
RAR-β antibody (mAb) (Clone 8B-10B2)	Raised against amino acids 413-448 of human RAR-β.	H	EMSA, IHC, IP, WB	100 µg 10 µg	61027 61028
RAR-γ antibody (mAb) (Clone 4γ-7A11)	Raised against recombinant protein with amino acids 428-441 of human RAR-γ.	H	ELISA, EMSA, ICC, IP, WB	100 µg 10 µg	39973 39974
RbAp46/48 antibody (pAb)	Raised against recombinant human RbAp46 protein.	H, WR	ChIP, WB	200 µl 10 µl	39198 39199
RBBP5 antibody (pAb)	Raised against a peptide within the C-terminal region of human RBBP5.	H	WB	100 µl 10 µl	61405 61406
<b>NEW</b> RBPJ antibody (mAb) (Clone 1F1)	Raised against full-length recombinant human RBPJ protein.	H	ChIP, ChCh, ChSeq, EMSA, IP	100 µg 10 µg	61505 61506
RBPJ antibody (mAb) (Clone 7A11)	Raised against full-length recombinant human RBPJ protein.	H	WB	100 µg 10 µg	61073 61074
Ring1B antibody (mAb)	Raised against recombinant full-length human Ring1B.	H, Mk, M	ChIP, ChCh, ChSeq, IF, IP, WB	100 µg 10 µg	39663 39664
RNA pol II antibody (mAb) (Clone 4H8)	Raised against a peptide containing YSPTSpPS from human RNA pol II.	BY, Ce, H, M, R	ChIP, ChCh, ChSeq, ELISA, IF, IP, WB	200 µl	39097
RNA Pol II antibody (mAb) (Clone 4F8)	Raised against peptide with human RNA Pol II C-terminal heptad repeat domain.	H, M	ChIP, IF, IP, WB	100 µg 10 µg	61081 61082
RNA Pol II CTD phospho Tyr1 antibody (mAb) (Clone 3D12)	Raised against a peptide with the RNA Pol II CTD sequence phosphorylated at tyrosine 1.	H, WR	ChIP, IP, WB	100 µg 10 µg	61383 61384
RNA Pol II CTD phospho Ser2 antibody (mAb) (Clone 3E10)	Raised against a peptide with the RNA Pol II CTD sequence phosphorylated at serine 2.	H, M	ChIP, ChCh, ChSeq, IF, IP, WB	100 µg 10 µg	61083 61084
RNA Pol II CTD phospho Ser2 antibody (pAb)	Raised against a peptide with the RNA Pol II CTD sequence phosphorylated at serine 2.	H	DB, WB	200 µl 10 µl	39563 39564

**Reactivity:** B = Bovine; BY = Budding Yeast; Ce = *C. elegans*; Dr = *Drosophila*; FY = Fission Yeast; Hm = Hamster; H = Human; Mk = Monkey; M = Mouse; NS = Not Species Specific; Rb = Rabbit; R = Rat; WR = Wide range predicted  
**Appl.:** ChIP = Chromatin IP; ChCh = ChIP-chip; ChSeq = ChIP-Seq; DB = Dot Blot; FC = Flow Cytometry; ICC = Immunocytochemistry; IF = Immunofluorescence; IHC = Immunohistochemistry; IP = Immunoprecipitation; MeDIP = Methyl-DNA IP; WB = Western Blot

Antibody	Immunogen	Reactivity	Applications	Format	Catalog No.
RNA Pol II CTD phospho Thr4 antibody (pAb)	Raised against a peptide with the RNA Pol II CTD sequence phosphorylated at threonine 4.	H	WB	100 µg 10 µg	61307 61308
RNA Pol II CTD phospho Thr4 antibody (mAb) (Clone 6D7)	Raised against a peptide with the RNA Pol II CTD sequence phosphorylated at threonine 4.	H, WR	ChIP, IF, WB	100 µg 10 µg	61361 61362
RNA Pol II CTD phospho Ser5 antibody (mAb) (Clone 3E8)	Raised against a peptide with the RNA Pol II CTD sequence phosphorylated at serine 5.	H	ChIP, ChCh, ChSeq, IF, IP, WB	100 µg 10 µg	61085 61086
RNA pol II CTD phospho Ser5 antibody (pAb)	Raised against a peptide with RNA Pol II heptad repeat phosphorylated at serine 5. (Rabbit serum)	H, M, WR	ChIP, DB, IF, WB	200 µl 10 µl	39233 39234
RNA pol II CTD phospho Ser5 antibody (pAb)	Raised against a peptide with RNA Pol II heptad repeat phosphorylated at serine 5. (Purified rabbit IgG)	H, M, WR	ChIP, ChCh, ChSeq, DB, WB	100 µg 10 µg	39749 39750
RNA Pol II CTD phospho Ser7 antibody (mAb) (Clone 4E12)	Raised against a peptide with the RNA Pol II CTD sequence phosphorylated at serine 7.	H	ChIP, ChCh, ChSeq, IF, IP, WB	100 µg 10 µg	61087 61088
Rsf1 antibody (pAb)	Raised against His-tagged protein with amino acids 165-350 <i>Drosophila</i> Rsf1.	Dr	IF, IP, WB	100 µl	39579
RXR-α antibody (mAb) (Clone 4RX-3A2)	Raised against recombinant protein to the C-terminal region of mouse RXR-α.	H	EMSA, IP, WB	100 µg 10 µg	61029 61030
RXR-β antibody (mAb) (Clone 16RX-2E1)	Raised against peptide to the N-terminal region of mouse RXR-β.	H	EMSA, IF, IHC, WB	100 µg 10 µg	61031 61032
RXR-γ antibody (mAb) (Clone 12RX-2D3)	Raised against peptide within the D-region region of mouse RXR-γ.	H	EMSA, IHC, WB	100 µg 10 µg	61033 61034
<b>NEW</b> RYBP antibody (pAb)	Raised against a peptide with the C-terminal region of human RYBP.	H, M	WB	100 µl 10 µl	61461 61462
SALL4 antibody (pAb)	Raised against a peptide to the N-terminus of human SALL4.	M	WB	100 µl 10 µl	39957 39958
SAP30 antibody (pAb)	Raised against recombinant full-length human SAP30.	H	ChIP, ChCh, ChSeq, IP, WB	100 µl 10 µl	39731 39732
SATB1 antibody (pAb)	Raised against a peptide within the N-terminal region of SATB1.	H, M	WB	100 µl 10 µl	39839 39840
<b>NEW</b> SETD7 / SET7 antibody (pAb)	Raised against a peptide to human SET7D / SET7.	H	WB	100 µl 10 µl	61451 61452
SET8 / PR-SET7 antibody (pAb)	Raised against a peptide to the N-terminal half of SET8 / PR-SET7.	H	WB	100 µl 10 µl	61009 61010
Sf3b3 antibody (mAb) (Clone 1YO-1B10)	Raised against a peptide containing amino acids 1057-1076 of human Sf3b3.	H, M	IP, WB	100 µg 10 µg	61345 61346
SIN3A antibody (pAb)	Raised against a peptide to the N-terminus of SIN3A.	H, M	ChIP, IP, WB	100 µl 10 µl	39865 39866
SIP1 antibody (mAb) (Clone 6E5)	Raised against recombinant protein corresponding to amino acids 1-360 of human SIP1.	H	IF, IHC, IP, WB	100 µg 10 µg	61095 61096

**Reactivity:** B = Bovine; BY = Budding Yeast; Ce = *C. elegans*; Dr = *Drosophila*; FY = Fission Yeast; Hm = Hamster; H = Human; Mk = Monkey; M = Mouse; NS = Not Species Specific; Rb = Rabbit; R = Rat; WR = Wide range predicted  
**App.:** ChIP = Chromatin IP; ChCh = ChIP-chip; ChSeq = ChIP-Seq; DB = Dot Blot; FC = Flow Cytometry; ICC = Immunocytochemistry; IF = Immunofluorescence; IHC = Immunohistochemistry; IP = Immunoprecipitation; MeDIP = Methyl-DNA IP; WB = Western Blot



Antibody	Immunogen	Reactivity	Applications	Format	Catalog No.
SIPI antibody (pAb)	Raised against a peptide to the N-terminus of human SIPI.	H	WB	100 µl 10 µl	6113 6114
SIRT1 antibody (mAb) (Clone 2G1/F7)	Raised against amino acids 581-630 of human SIRT1.	H	IF, IP, WB	200 µg 10 µg	39353 39354
SIRT2 antibody (pAb)	Raised against a peptide to the C-terminus of human SIRT2.	H	WB	100 µl 10 µl	39903 39904
SIRT2 antibody (pAb)	Raised against a peptide to the C-terminus of human SIRT2.	H	IF, IP, WB	100 µl 10 µl	61043 61044
SIRT2 antibody (pAb)	Raised against a peptide to the C-terminus of mouse SIRT2.	M	IF, WB	100 µl 10 µl	61045 61046
SIRT2 antibody (mAb) (Clone 7G5)	Raised against a peptide to human SIRT2 surrounding Ser331. This antibody recognizes both the unphosphorylated and the phospho-Ser331 forms of SIRT2.	H	WB	100 µg 10 µg	61365 61366
SIRT2 phospho Ser331 antibody (mAb) (Clone 6B5)	Raised against a peptide with phospho-serine 331 of human SIRT2.	H	WB	100 µg 10 µg	61363 61364
SIRT6 antibody (pAb)	Raised against a peptide to the C-terminus of human SIRT6.	H	WB	100 µl 10 µl	39911 39912
SMAD3 antibody (pAb)	Raised against a peptide within human SMAD3 (mothers against decapentaplegic homolog 3).	H	WB	100 µl 10 µl	61249 61250
<b>NEW</b> SMARCA1 / SNF2L1 antibody (mAb) (Clone 2C4)	Raised against a recombinant protein containing amino acids 571-772 of human SNF2L	H	IHC, WB	100 µg 10 µg	61465 61466
SMARCA2 / BRM antibody (mAb) (Clone 1H7A10)	Raised against a recombinant protein containing amino acids 48-214 of mouse BRM.	H, M	ChIP, IF, WB	100 µg 10 µg	39805 39806
SMARCA4 / BRG1 antibody (mAb) (Clone 3G4)	Raised against a recombinant protein containing amino acids 214-279 of mouse BRG1.	H, M	IF, WB	100 µg 10 µg	39807 39808
SMARCAL1 / HARP antibody (mAb) (Clone 4B10)	Raised against purified bovine SMARCAL1 / HARP protein.	B, H, M	IP, WB	100 µg 10 µg	61115 61116
SMARCC1 / BAF155 antibody (pAb)	Raised against a peptide within the N-terminal region of human SMARCC1 / BAF155.	H	WB	100 µl 10 µl	61409 61410
<b>NEW</b> SMARCC2 / BAF170 antibody (pAb)	Raised against a peptide within the C-terminal region of human SMARCC2 / BAF170.	H, M	WB	100 µl 10 µl	61471 61472
SMC1-α antibody (pAb)	Raised against a peptide to the C-terminus of human SMC1-α.	H	WB	100 µl 10 µl	61067 61068
SMC1 phospho Ser957 antibody (pAb)	Raised against a peptide with phospho-serine 957 of human SMC1.	H	DB, WB	200 µl 10 µl	39631 39632
SMC3 antibody (pAb)	Raised against a peptide to the C-terminal region of human SMC3.	H	WB	100 µl 10 µl	61131 61132
SMC4 antibody (pAb)	Raised against a peptide to the N-terminus of human SMC4	H	WB	100 µl 10 µl	61129 61130

**Reactivity:** B = Bovine; BY = Budding Yeast; Ce = *C. elegans*; Dr = *Drosophila*; FY = Fission Yeast; Hm = Hamster; H = Human; Mk = Monkey; M = Mouse; NS = Not Species Specific; Rb = Rabbit; R = Rat; WR = Wide range predicted  
**App.:** ChIP = Chromatin IP; ChCh = ChIP-chip; ChSeq = ChIP-Seq; DB = Dot Blot; FC = Flow Cytometry; ICC = Immunocytochemistry; IF = Immunofluorescence; IHC = Immunohistochemistry; IP = Immunoprecipitation; MeDIP = Methyl-DNA IP; WB = Western Blot

Antibody	Immunogen	Reactivity	Applications	Format	Catalog No.
SMRT / NCoR2 antibody (mAb) (Clone 5.10)	Raised against a recombinant protein with amino acids 2004-2310 of human SMRT / NCoR2.	H	WB	100 µg	61105
				10 µg	61106
SMRT / NCoR2 antibody (pAb)	Raised against a peptide within the N-terminal region of SMRT / NCoR2.	H	WB	100 µl	39845
				10 µl	39846
Smyd3 antibody (pAb)	Raised against a peptide against human Smyd3.	H	WB	100 µl	61407
				10 µl	61408
SNAI1 / Snail antibody (mAb) (Clone 9H2)	Raised against full-length, recombinant human SNAI1 protein.	H	IHC, WB	100 µg	61367
				10 µg	61368
NEW SND1 antibody (mAb) (Clone SN4-1)	Raised against a recombinant protein with amino acids 505-674 of human SND1.	H, M	IF, IHC, IP, WB	100 µg	61473
				10 µg	61474
SNF2h antibody (mAb)	SNF2h+ clones were selected from purified RSF complex-immunized mice.	H, M	ChIP, IF, IP, WB	200 µl	39543
				10 µl	39544
SNF5 antibody (pAb)	Raised against a peptide to the C-terminus of human SNF5.	H	WB	100 µl	39775
				10 µl	39776
Sox2 antibody (pAb)	Raised against a peptide containing amino acids 111-140 of mouse Sox2.	H	ChIP, IF, IHC, IP, WB	100 µl	39823
				10 µl	39824
Sox2 antibody (pAb)	Raised against a peptide to the C-terminal region of human Sox2.	H	WB	100 µl	39843
				10 µl	39844
Sox11 antibody (pAb)	Raised against a peptide to the N-terminus of human Sox11.	H	WB	100 µl	61181
				10 µl	61182
Sp1 antibody (pAb)	Raised against amino acids 520-534 of human Sp1.	H, M, R	ChIP, IP, WB	100 µl	39058
Sp1 non-phospho antibody (pAb)	Raised against a peptide with serine 101 of human Sp1. This antibody recognizes human Sp1 when it is <b>not phosphorylated</b> at serine 101.	H	WB	100 µl	39809
				10 µl	39810
Sp1 phospho Ser101 antibody (pAb)	Raised against a peptide with phospho-serine 101 of human Sp1.	H	DB, WB	100 µl	39757
				10 µl	39758
SREBP-1 antibody (mAb) (Clone IgG-2A4)	Raised against a recombinant protein with amino acids 301-407 of human SREBP-1.	H	IP, WB	100 µg	39939
				10 µg	39940
SREBP-2 antibody (mAb) (Clone IgG-1C6)	Raised against a recombinant protein with amino acids 833-1141 of human SREBP-2.	H	ChIP, IP, WB	100 µg	39941
				10 µg	39942
SRF antibody (mAb) (Clone 2C5)	Raised against full-length mouse SRF protein.	H, M	IHC, WB	100 µg	61385
				10 µg	61386
SRF Drosophila antibody (mAb)	Raised against full-length <i>Drosophila</i> SRF.	Dr	WB	200 µl	39093
NEW SSRP1 antibody (pAb)	Raised against a peptide to the N-terminus of human SSRP1.	H	WB	100 µl	61455
				10 µl	61456
STAT1 phospho Ser727 antibody (pAb)	Raised against a peptide with phospho-serine 727 of human STAT1.	H	DB, WB	200 µl	39633
				10 µl	39634
STAT1α antibody (pAb)	Raised against amino acids 712-750 of human STAT1α.	H	WB	100 µl	39059

**Reactivity:** B = Bovine; BY = Budding Yeast; Ce = *C. elegans*; Dr = *Drosophila*; FY = Fission Yeast; Hm = Hamster; H = Human; Mk = Monkey; M = Mouse; NS = Not Species Specific; Rb = Rabbit; R = Rat; WR = Wide range predicted  
**Appl.:** ChIP = Chromatin IP; ChCh = ChIP-chip; ChSeq = ChIP-Seq; DB = Dot Blot; FC = Flow Cytometry; ICC = Immunocytochemistry; IF = Immunofluorescence; IHC = Immunohistochemistry; IP = Immunoprecipitation; MeDIP = Methyl-DNA IP; WB = Western Blot

Antibody	Immunogen	Reactivity	Applications	Format	Catalog No.
STAT2 phospho Tyr689 antibody (pAb)	Raised against a peptide with phospho-tyrosine 689 of human STAT2.	H	DB, WB	200 µl 10 µl	39611 39612
STAT3 phospho Tyr705 antibody (pAb)	Raised against a peptide with phospho-tyrosine 705 of human STAT3.	H	DB, WB	200 µl 10 µl	39595 39596
STAT3 phospho Ser727 antibody (pAb)	Raised against a peptide with phospho-tyrosine 727 of human STAT3.	H	DB, WB	200 µl 10 µl	39613 39614
<b>NEW</b> STAT4 antibody (pAb)	Raised against a peptide to the C-terminal region of human STAT4.	H	WB	100 µl 10 µl	61507 61508
STAT5A antibody (pAb)	Raised against a peptide to the C-terminal region of human STAT5A.	H	WB	100 µg 10 µg	61133 61134
STAT5A/B phospho Tyr694/Tyr699 antibody (pAb)	Raised against a peptide with phospho-tryosine 694 of human STAT5A. (Human STAT5B shares the identical sequence surrounding Tyr699.)	H	DB, WB	200 µl 10 µl	39617 39618
STAT5A/B phospho Ser726/Ser731 antibody (pAb)	Raised against a peptide with phospho-serine 726 of human STAT5A. (Human STAT5B shares the identical sequence surrounding Ser731.)	H	DB, WB	200 µl 10 µl	39597 39598
STAT5B antibody (pAb)	Raised against a peptide to the C-terminal region of human STAT5B.	H	WB	100 µg 10 µg	61137 61138
Supt3h antibody (mAb) (Clone ISP-2C10)	Raised against a peptide containing amino acids 10-27 of human Supt3h.	H	ChIP, IP, WB	100 µg 10 µg	61343 61344
Supt16H / Spt16 antibody (pAb)	Raised against a peptide containing human Supt16H / Spt16.	H	WB	100 µl 10 µl	61441 61442
SUV39H1 antibody (mAb) (Clone MG44)	Raised against a recombinant protein with amino acids 1-126 of mouse SUV39H1.	H, M	ChIP, IP, WB	100 µg 10 µg	39785 39786
<b>NEW</b> SUV39H2 antibody (pAb)	Raised against a peptide to the C-terminal region of mouse SUV39H2.	H, M	WB	100 µl 10 µl	61449 61450
SUV420H1 antibody (pAb)	Raised against a peptide to the N-terminal region of human SUV420H1.	H	WB	100 µl 10 µl	61415 61416
Suz12 antibody (mAb) (Clone 2A09)	Raised against full-length recombinant human Suz12.	H	ChIP, IF, IHC, IP	100 µg 10 µg	39877 39878
Suz12 antibody (pAb)	Raised against a peptide to the C-terminus of human Suz12.	H, M	ChIP, IP, WB	200 µl 10 µl	39357 39358
TAC1 antibody (pAb)	Raised against amino acids 116-132 of human TAC1.	H, M	FC, WB	100 µg	40936
Tada2a antibody (mAb) (Clone 2AD-2A1)	Raised against a peptide containing amino acids 1-17 of human Tada2a.	H	IP	100 µg 10 µg	61333 61334
TAL-1 antibody (mAb) (Clone BTL73)	Raised against full-length recombinant human TAL-1 protein.	H	EMSA, IHC, WB	100 µg 10 µg	61259 61260
TAZ / WWTR1 antibody (pAb)	Raised against a peptide to the C-terminal region of human TAZ / WWTR1.	H	WB	100 µl 10 µl	61265 61266
TBK1 antibody (mAb) (Clone 108A429)	Raised against amino acids 563-577 of human TBK1.	H, M, R	WB	100 µg	40909

**Reactivity:** B = Bovine; BY = Budding Yeast; Ce = *C. elegans*; Dr = *Drosophila*; FY = Fission Yeast; Hm = Hamster; H = Human; Mk = Monkey; M = Mouse; NS = Not Species Specific; Rb = Rabbit; R = Rat; WR = Wide range predicted  
**Appl.:** ChIP = Chromatin IP; ChCh = ChIP-chip; ChSeq = ChIP-Seq; DB = Dot Blot; FC = Flow Cytometry; ICC = Immunocytochemistry; IF = Immunofluorescence; IHC = Immunohistochemistry; IP = Immunoprecipitation; MeDIP = Methyl-DNA IP; WB = Western Blot

Antibody	Immunogen	Reactivity	Applications	Format	Catalog No.
Tbp antibody (mAb) (Clone 3TFI-3G3)	Raised against a recombinant protein corresponding to human Tbp.	H, M	IF, IHC, IP, WB	100 µg 10 µg	61329 61330
Tbpl1 antibody (mAb) (Clone 3TRF-2A1)	Raised against a recombinant protein corresponding to mouse Tbpl1.	H, M	IHC, WB	100 µg 10 µg	61331 61332
TCF7L1 / TCF3 antibody (pAb)	Raised against a peptide to the N-terminus of human TCF7L1 / TCF3.	H	WB	100 µl 10 µl	61125 61126
TDG / Thymine-DNA glycosylase antibody (pAb)	Raised against full-length recombinant mouse thymine DNA glycosylase (TDG).	M	WB	100 µl 10 µl	61437 61438
<b>NEW</b> Tet1 antibody (pAb)	Raised against a peptide to the C-terminal region of mouse Tet1.	H, M	ChIP, ChCh, ChSeq, WB	100 µl 10 µl	61443 61444
Tet2 antibody (mAb) (Clone 2IF11)	Raised against a recombinant protein with amino acids 1-300 of human Tet2.	H	IP, WB	100 µg 10 µg	61389 61390
Tet3 antibody (pAb)	Raised against a recombinant protein with amino acids 1159-1329 of mouse Tet3.	M	WB	100 µl 10 µl	61395 61396
TLR2 antibody (pAb)	Peptide mix of amino acids 180-196, 353-370 & 473-489 of human TLR2.	H	WB	100 µg	40981
TLR3 antibody (mAb) (Clone 40C1285)	Raised against a KLH-peptide to human TLR3.	H	FC, IHC, IP, WB	100 µg	40952
TLR6 antibody (mAb) (Clone 86B1153)	Raised against amino acids 408-424 of human TLR6.	H	FC, WB	100 µg	40954
TLR8 antibody (mAb) (Clone 44C143)	Raised against amino acids 750-850 of human TLR8.	H, M	FC, WB	100 µg	40955
TLR9 antibody (mAb) (Clone 26C593)	Raised against a KLH-peptide to amino acids 268-284 of human TLR9.	H, M, R	FC, IHC, WB	100 µg	40956
TORC2 antibody (pAb)	Raised against a peptide to the C-terminus of human TORC2.	H, M	WB	100 µl 10 µl	39779 39780
TRAF2 antibody (mAb) (Clone 33A1293)	Raised against amino acids 215-222 of human TRAF2 protein.	H	WB	100 µg	40919
TRAF5 antibody (mAb) (Clone 55A219)	Raised against amino acids 77-186 of human TRAF5 protein.	H	WB	100 µg	40920
TRAIL antibody (mAb) (Clone 55B709.3)	Raised against amino acids 17-35 of human TRAIL.	H	FC, WB	100 µg	40966
TRANCE/RANKL antibody (mAb) (Clone 12A380)	Raised against amino acids 1-317 of GST-tagged, human TRANCE/RANKL.	H, M	FC, IHC, WB	100 µg	40940
TRF2 antibody (pAb)	Raised against full-length human TRF2 protein.	H, M, R	ChIP, IP, WB	100 µg	39223
TRIM28 antibody (mAb) (Clone ITb-1A9)	Raised against full-length mouse TRIM28 protein.	H	ChIP, IF, IP, WB	100 µg 10 µg	61173 61174
TROY/TAJ antibody (pAb)	Peptide mix of amino acids 29-44, 204-219 & 409-421 of human TROY/TAJ.	H, M	WB	100 µg	40937
Trrap antibody (mAb) (Clone 2TRR-1B3)	Raised against a peptide containing amino acids 2023-2042 of human Trrap.	H, M	ChIP, IP	100 µg 10 µg	61335 61336
TWIST antibody (mAb)	Raised against full-length recombinant mouse TWIST protein.	H, M	IF, IHC, WB	100 µg 10 µg	61097 61098
UBE2N antibody (pAb)	Peptide mixture of amino acids 2-19 and 131-148 of human UBE2N.	H	IP, WB	100 µg	39224
UBE2V1α antibody (pAb)	Raised against amino acids 31-49 of human UBE2V1α.	H	WB	100 µg	39225
UBE2V2 antibody (pAb)	Raised against amino acids 12-28 of human UBE2V2.	H	WB	100 µg	39226

**Reactivity:** B = Bovine; BY = Budding Yeast; Ce = *C. elegans*; Dr = *Drosophila*; FY = Fission Yeast; Hm = Hamster; H = Human; Mk = Monkey; M = Mouse; NS = Not Species Specific; Rb = Rabbit; R = Rat; WR = Wide range predicted  
**Appl.:** ChIP = Chromatin IP; ChCh = ChIP-chip; ChSeq = ChIP-Seq; DB = Dot Blot; FC = Flow Cytometry; ICC = Immunocytochemistry; IF = Immunofluorescence; IHC = Immunohistochemistry; IP = Immunoprecipitation; MeDIP = Methyl-DNA IP; WB = Western Blot

Antibody	Immunogen	Reactivity	Applications	Format	Catalog No.
Ubiquitin antibody (mAb) (Clone P4D1)	Raised against purified bovine ubiquitin.	WR	IF, IHC, IP, WB	100 µg 10 µg	39741 39742
Ubn1 antibody (pAb)	Raised against amino acids 1-345 of human Ubn1.	H	WB	100 µl 10 µl	39869 39870
Uhrf1 antibody (mAb) (Clone 1RC-1C10)	Raised against a peptide containing amino acids 263-793 of human Uhrf1.	H	IF, IHC, IP, WB	100 µg 10 µg	61341 61342
Uhrf1 antibody (pAb)	Raised against a peptide to the C-terminus of human Uhrf1.	H	WB	200 µl 10 µl	39625 39626
UTF1 antibody (pAb)	Raised against a peptide within the N-terminal region of human UTF1.	H, M	WB	100 µl 10 µl	61253 61254
<b>NEW</b> WDR5 antibody (pAb)	Raised against a peptide within the C-terminal region of human WRD5.	H	WB	100 µl 10 µl	61485 61486
WRN antibody (mAb) (Clone 195C)	Raised against a recombinant protein containing amino acids 1072-1432 of human WRN.	H	IF, IHC, WB	100 µg 10 µg	61169 61170
XRCC1 antibody (pAb)	Raised against a recombinant protein containing the N-terminal region of human XRCC1.	H	WB	100 µl 10 µl	61371 61372
YAP1 antibody (pAb)	Raised against a peptide within the C-terminal region of human YAP1.	H	WB	100 µl 10 µl	61293 61294
YY1 antibody (pAb)	Raised against amino acids 109-123 of human YY1.	H, Mk, M, R	ChIP, IP, WB	100 µl	39071
ZEB1 antibody (pAb)	Raised against a peptide to the N-terminal region of human ZEB1.	H	WB	100 µl 10 µl	61119 61120

**Reactivity:** B = Bovine; BY = Budding Yeast; Ce = *C. elegans*; Dr = *Drosophila*; FY = Fission Yeast; Hm = Hamster; H = Human; Mk = Monkey; M = Mouse; NS = Not Species Specific; Rb = Rabbit; R = Rat; WR = Wide range predicted  
**Appl.:** ChIP = Chromatin IP; ChCh = ChIP-chip; ChSeq = ChIP-Seq; DB = Dot Blot; FC = Flow Cytometry; ICC = Immunocytochemistry; IF = Immunofluorescence; IHC = Immunohistochemistry; IP = Immunoprecipitation; MeDIP = Methyl-DNA IP; WB = Western Blot

## Fluorescent and HRP Secondary Antibody Conjugates

The table below provides details on all of Active Motif's secondary antibody conjugates. For more comprehensive information on each, including data and downloadable Technical Data Sheets, please visit our website at [www.activemotif.com/secondary](http://www.activemotif.com/secondary).

Name	Absorption	Emission	$\epsilon$ L/(mol-cm)	Stokes shift	Format	Catalog No.
HRP Goat anti-Mouse IgG	—	—	—	—	400 $\mu$ g	15014
HRP Goat anti-Rabbit IgG	—	—	—	—	400 $\mu$ g	15015
ATTO 532 (GSD) Goat anti-Mouse IgG	534 nm	560 nm	115,000	26 nm	250 $\mu$ l	15070
					35 $\mu$ l	15071
ATTO 532 (GSD) Goat anti-Rabbit IgG	534 nm	560 nm	115,000	26 nm	250 $\mu$ l	15072
					35 $\mu$ l	15073
ATTO 594 Goat anti-Mouse IgG	601 nm	627 nm	120,000	26 nm	250 $\mu$ l	15037
					35 $\mu$ l	15057
ATTO 594 Goat anti-Rabbit IgG	601 nm	627 nm	120,000	26 nm	250 $\mu$ l	15047
					35 $\mu$ l	15067
ATTO 647N (STED/GSD) Goat anti-Mouse IgG	644 nm	669 nm	150,000	25 nm	250 $\mu$ l	15038
					35 $\mu$ l	15058
ATTO 647N (STED/GSD) Goat anti-Rabbit IgG	644 nm	669 nm	150,000	25 nm	250 $\mu$ l	15048
					35 $\mu$ l	15068
ATTO 655 (STED) Goat anti-Mouse IgG	663 nm	684 nm	125,000	21 nm	250 $\mu$ l	15039
					35 $\mu$ l	15059
ATTO 655 (STED) Goat anti-Rabbit IgG	663 nm	684 nm	125,000	21 nm	250 $\mu$ l	15049
					35 $\mu$ l	15069
Chromo <sup>™</sup> 488 Goat anti-Mouse IgG	498 nm	524 nm	73,000	26 nm	1 mg	15031
					100 $\mu$ g	15051
Chromo <sup>™</sup> 488 Goat anti-Rabbit IgG	498 nm	524 nm	73,000	26 nm	1 mg	15041
					100 $\mu$ g	15061
Chromo <sup>™</sup> 494 Goat anti-Mouse IgG	489 nm	624 nm	55,000	135 nm	1 mg	15032
					100 $\mu$ g	15052
Chromo <sup>™</sup> 494 Goat anti-Rabbit IgG	489 nm	624 nm	55,000	135 nm	1 mg	15042
					100 $\mu$ g	15062
Chromo <sup>™</sup> 505 Goat anti-Mouse IgG	514 nm	530 nm	70,000	16 nm	1 mg	15030
					100 $\mu$ g	15050
Chromo <sup>™</sup> 505 Goat anti-Rabbit IgG	514 nm	530 nm	70,000	16 nm	1 mg	15040
					100 $\mu$ g	15060
Chromo <sup>™</sup> 546 Goat anti-Mouse IgG	550 nm	567 nm	98,800	17 nm	1 mg	15033
					100 $\mu$ g	15053
Chromo <sup>™</sup> 546 Goat anti-Rabbit IgG	550 nm	567 nm	98,800	17 nm	1 mg	15043
					100 $\mu$ g	15063



Name	Absorption	Emission	$\epsilon$ L/(mol-cm)	Stokes shift	Format	Catalog No.
Chromo™ 642 Goat anti-Mouse IgG	647 nm	666 nm	180,000	19 nm	1 mg	15034
					100 µg	15054
Chromo™ 642 Goat anti-Rabbit IgG	647 nm	666 nm	180,000	19 nm	1 mg	15044
					100 µg	15064
Rhodamine 6G (GSD) Goat anti-Mouse IgG	508 nm	558 nm	116,000	50 nm	250 µl	15074
					35 µl	15075
Rhodamine 6G (GSD) Goat anti-Rabbit IgG	508 nm	558 nm	116,000	50 nm	250 µl	15076
					35 µl	15077