

## ATTO 655 (STED) Goat anti-Mouse IgG

**Catalog No:** 15039, 15059

**Format:** 250 µl, 35 µl

### Chemical Properties:

**Contents:** 250 µl (Catalog No. 15039) or 35 µl (Catalog No. 15059) of affinity purified goat anti-mouse IgG (H+L) conjugated to ATTO 655 (STED) in PBS, pH 7.4, 0.01% sodium azide.

**Specificity:** This antibody was purified by immunoaffinity chromatography and cross-adsorbed. It reacts with whole molecule mouse IgG and shows minimum cross-reactivity with bovine, chicken, goat, guinea pig, horse, human, rabbit, rat and sheep serum proteins. No cross-reactivity was observed with non-immunoglobulin serum proteins.

**Fluorescent Properties:** Characteristic features of the ATTO 655 (STED) are strong absorption, good fluorescence quantum yield, excellent thermal and photo stability, outstanding ozone resistance, very good water solubility, and very little triplet formation.

**Molar extinction Coefficient:** 125,000 M<sup>-1</sup>cm<sup>-1</sup> (measured at A<sub>max</sub>)

**Quantum Yield:** 30%

**Excitation Max:** 663 nm

**Emission Max:** 684 nm

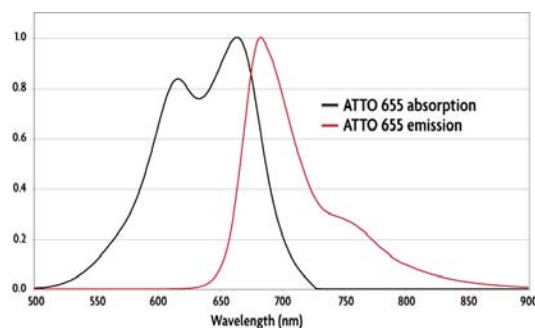
### Application:

Immunofluorescence: 1:1000 to 1:2000

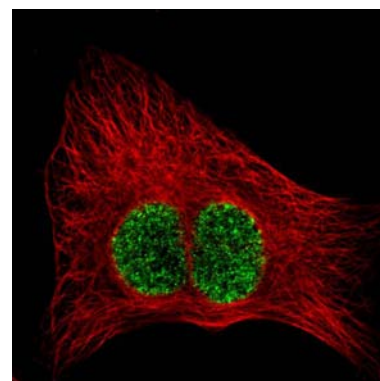
**Quality Control:** This antibody has been quality control-tested by spectrophotometrical evaluation and by immunocytochemistry.

**Storage and Guarantee:** Some products may be shipped at room temperature. This will not affect their stability or performance. Upon receipt, unconjugated antibodies may be stored at -20°C for up to 2 years. Fluorophore- & enzyme-conjugated antibodies should be stored at 4°C. Fluorophore-conjugated antibodies should be protected from light. Keep reagents on ice when not in storage; to avoid repeated freeze/thaw cycles, we recommend aliquoting items that will be stored frozen into single-use fractions prior to freezing. This product is guaranteed for 6 months from date of receipt.

This product is for research use only and is not for use in diagnostic procedures.



**Absorption and emission spectra of ATTO 655 (STED) Dye.**



**Immunofluorescence staining using the ATTO 655 (STED) Goat anti-Mouse IgG secondary antibody.**

HeLa cells stained with alpha Tubulin mouse monoclonal antibody (Clone 5-B-1-2, Cat. No. 39527) at a 1:500 dilution and ATTO 655