

## Recombinant BRPF1 (627-746) protein

---

**Catalog No:** 31375, 31875

**Lot No:** 32717002

**Expressed In:** *E. coli*

**Quantity:** 100, 1000 µg

**Concentration:** 1.3 µg/µl

**Source:** Human

**Buffer Contents:** Recombinant BRPF1 (627-746) protein expressed in *E. coli* and provided in 25 mM Tris pH 8, 300 mM NaCl and 10% glycerol.

**Background: Bromodomain and PHD finger containing (BRPF1)** protein is a component of the MOZ/MORF complex which has histone H3 acetyltransferase activity. The bromodomain of BRPF1 recognizes acetylated histone lysine residues and function as a 'reader' of these epigenetic histone marks to regulate chromatin structure and gene expression by linking associated proteins to the recognized acetylated nucleosomal targets. BRPF1 is known to positively regulate the transcription of RUNX1 and RUNX2.

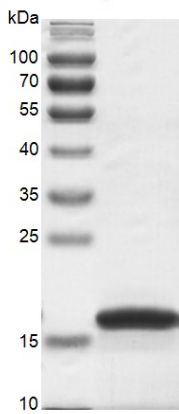
**Protein Details:** The peptide corresponding to amino acids 627 - 746 that contains the bromodomain sequences of BRPF1 (accession number NM\_001003694.1) was expressed in *E. coli* and contains an N-terminal His-Tag and C-terminal FLAG-Tag with an observed molecular weight of 20.3 kDa. The recombinant protein is >90% pure by SDS-PAGE.

**Application Notes:** Recombinant BRPF1 (627-746) is suitable for use in binding assays, inhibitor screening, and selectivity profiling.

**Storage and Guarantee:** Recombinant proteins in solution are temperature sensitive and must be stored at -80°C to prevent degradation. Avoid repeated freeze/thaw cycles and keep on ice when not in storage. This product is guaranteed for 6 months from date of receipt.

This product is for research use only and is not for use in diagnostic procedures.

### BRPF1 (627-746)



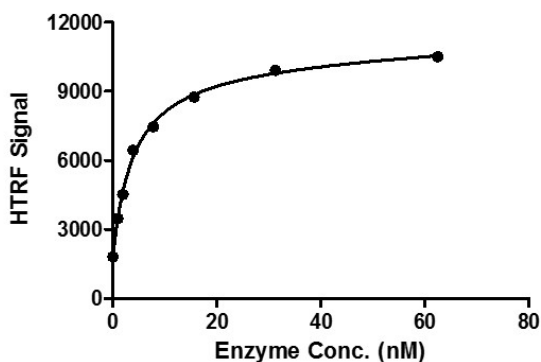
### Recombinant BRPF1 (627-746) protein gel.

BRPF1 (627-746) protein was run on a 12% SDS-PAGE gel and stained with Coomassie Blue.

M: 20.3 kDa

Purity: > 90%

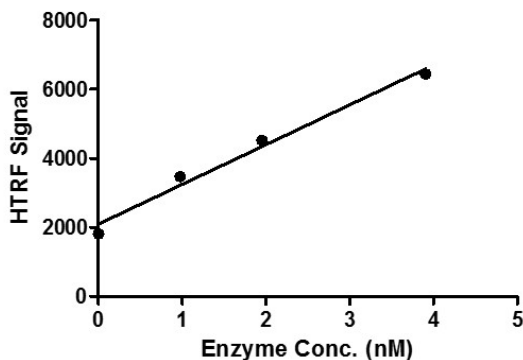
### BRPF1 (627-746) Titration



### HTRF assay for BRPF1 (627-746) activity

1  $\mu$ M H4K5/8/12/16(4ac) peptide was incubated with different concentrations of BRPF1 (627-746) protein in 10  $\mu$ l reaction system containing 50 mM HEPES-NaOH pH7.5, 0.1% BSA for 1 hour, then 10  $\mu$ l FLAG antibody and SA-XL665 mixture (each 1:100 dilution in reaction buffer) was added to each reaction system and incubated for 30 min. All the operations and reactions were performed at room temperature.

### BRPF1 (627-746) Titration



### HTRF assay for BRPF1 (627-746) activity

1  $\mu$ M H4K5/8/12/16(4ac) peptide was incubated with different concentrations of BRPF1 (627-746) protein in 10  $\mu$ l reaction system containing 50 mM HEPES-NaOH pH7.5, 0.1% BSA for 1 hour, then 10  $\mu$ l FLAG antibody and SA-XL665 mixture (each 1:100 dilution in reaction buffer) was added to each reaction system and incubated for 30 min. All the operations and reactions were performed at room temperature.