

Copine I antibody (pAb)

Catalog Nos: 39101, 39102

RRID: AB_2793155

Isotype: Serum

Application(s): WB

Reactivity: Human

Volumes: 200 µl, 10 µl

Purification: None

Host: Rabbit

Molecular Weight: 68 kDa

Background: Copine I (CPNE1) is a member of a family of calcium phospholipid-binding proteins that play a role in cell signaling. Copine I augments the activated Tumor Necrosis Factor (TNF- α) signaling pathway in a calcium-dependent manner. Copine I is a repressor protein that physically interacts with NF κ B p65 to inhibit NF κ B-mediated transcription.

Immunogen: This Copine I antibody was raised against a peptide corresponding to amino acids 519-532 of human Copine I.

Buffer: Rabbit serum containing 30% glycerol and 0.035% sodium azide. Sodium azide is highly toxic.

Application Notes:

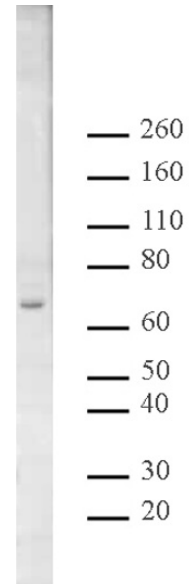
Applications Validated by Active Motif:

WB*: 1:500 - 1:2,000 dilution

*Note: many chromatin-bound proteins are not soluble in a low salt nuclear extract and fractionate to the pellet. Therefore, we recommend a High Salt / Sonication Protocol when preparing nuclear extracts.

Storage and Guarantee: Some products may be shipped at room temperature. This will not affect their stability or performance. Avoid repeated freeze/thaw cycles by aliquoting items into single-use fractions for storage at -20°C for up to 2 years. Keep all reagents on ice when not in storage. This product is guaranteed for 12 months from date of receipt.

This product is for research use only and is not for use in diagnostic procedures.



Copine I pAb tested by Western blot.
Detection of Copine I by Western blot analysis. 20 µg of PC-3 whole-cell extract probed with Copine I pAb at a 1:2,000 dilution.