

## JunB antibody (pAb)

**Catalog Nos:** 39549, 39550

**RRID:** AB\_2615034

**Isotype:** Serum

**Application(s):** WB

**Reactivity:** Human

**Volumes:** 200 µl, 10 µl

**Purification:** None

**Host:** Rabbit

**Molecular Weight:** 42 kDa

**Background:** JunB (Jun B proto-oncogene) is a member of the Jun family and forms a component of the AP-1 transcription factor complex. JunB forms heterodimers and homodimers with other members of the Jun/Fos family. It is a hallmark of many lymphomas and stimulates proliferation. Other AP-1 family members consist of c-Fos, Fra-1, Fra-2, FosB, c-Jun, and JunD.

**Immunogen:** This JunB antibody was raised against a synthetic peptide corresponding to amino acids 28-42 of human JunB.

**Buffer:** Rabbit serum containing 30% glycerol and 0.035% sodium azide. Sodium azide is highly toxic.

**Application Notes:**

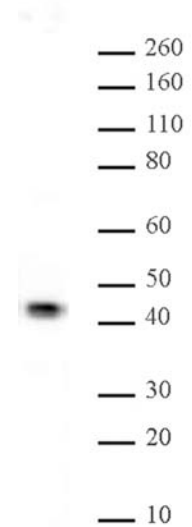
Applications Validated by Active Motif:

WB: 1:500 - 1:2,500 dilution

Individual optimization may be required.

**Storage and Guarantee:** Some products may be shipped at room temperature. This will not affect their stability or performance. Avoid repeated freeze/thaw cycles by aliquoting items into single-use fractions for storage at -20°C for up to 2 years. Keep all reagents on ice when not in storage. This product is guaranteed for 12 months from date of receipt.

This product is for research use only and is not for use in diagnostic procedures.



**JunB pAb tested by Western blot.**

HeLa cell nuclear extract (20 µg per lane) was probed with JunB pAb at a dilution of 1:1,000.