

PARP-2 antibody (pAb)

Catalog Nos: 39743, 39044, 39744

RRID: AB_2793328

Application(s): ChIP, IF, IP, WB

Reactivity: Human

Volumes: 100 µl, 50 µl, 10 µl

Purification: Affinity Purified

Host: Rabbit

Isotype: IgG

Molecular Weight: 66 kDa

Background: PARP-2 encodes a chromatin-associated enzyme, a poly-ADP ribosyl transferase, which modifies various nuclear proteins by poly-ADP ribosylation. The modification is dependent on DNA and is involved in the regulation of various important cellular processes such as differentiation, proliferation and tumor transformation. It also plays a role in the regulation of the molecular events involved in the recovery of cells from DNA damage. PARP-2 is cleaved by caspase enzymes during the process of apoptosis.

Immunogen: This PARP-2 antibody was raised against a recombinant protein corresponding to the C-terminal region of human PARP-2.

Buffer: PBS, 30% glycerol, and 0.05% sodium azide.

Application Notes:

Applications Validated by Active Motif:

ChIP: 2 - 10 µl per ChIP

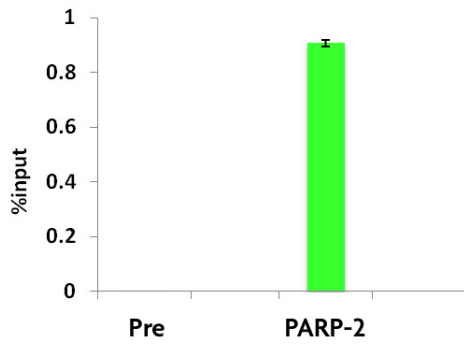
IP: 2 - 10 µl per IP

WB: 1:500 dilution

The addition of 0.05% Tween 20 in the blocking buffer and primary antibody incubation buffer is recommended to aid in detection by Western blot. Individual optimization may be required.

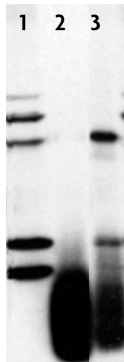
Storage and Guarantee: Some products may be shipped at room temperature. This will not affect their stability or performance. Avoid repeated freeze/thaw cycles by aliquoting items into single-use fractions for storage at -20°C for up to 2 years. Keep all reagents on ice when not in storage. This product is guaranteed for 12 months from date of receipt.

This product is for research use only and is not for use in diagnostic procedures.



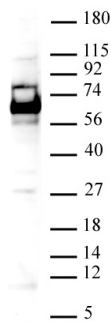
PARP-2 antibody tested by ChIP analysis.

Chromatin IP performed on stably transfected AC16 cells using the pre-immune serum (Pre) or the PARP-2 antibody. ChIP DNA was subjected to qPCR using primers specific for human CD36 gene. Data are presented relative to input.



PARP-2 antibody used for immunoprecipitation.

Western blot of immunoprecipitation using the PARP-2 antibody. Lane 1: input (AC16 whole cell lysate). Lane 2: IP using pre-immune serum. Lane 3: IP using PARP-2 antibody.



PARP-2 antibody tested by Western blot.

HeLa cell nuclear extract (20 µg) was probed with PARP-2 antibody at a dilution of 1:1000.