

SATB1 antibody (pAb)

Catalog Nos: 39839, 39840**RRID:** AB_2793363**Isotype:** IgG**Application(s):** WB**Reactivity:** Human, Mouse**Volumes:** 100 µl, 10 µl**Purification:** Affinity Purified**Host:** Rabbit**Molecular Weight:** 105 kDa

Background: SATB1 (Special AT-rich sequence-binding protein 1) is a chromosome-associated protein that binds to matrix attachment regions (MARs) of DNA at special AT-rich sequences and induces local chromatin-loop remodeling. SATB1 functions as both a chromatin organizer and transcription factor. It regulates gene expression and higher-order chromatin structure of multigene clusters. SATB1 acts as a docking site for several chromatin remodeling enzymes and recruits corepressors (HDACs) or coactivators (HATs) directly to promoters and enhancers. It is required for the switching of fetal globin genes, plays a role in chromatin organization and nuclear architecture during apoptosis. It is a crucial factor contributing to the initiation of X inactivation mediated by Xist RNA that occurs during embryogenesis. SATB1 contributes to metastatic potential in breast cancer cells, directly upregulating metastasis-associated genes while downregulating tumor-suppressor genes. It is also required for the differentiation of embryonic stem cells through repression of ES pluripotency factors Nanog, Klf4, and Tbx3.

Immunogen: This SATB1 antibody was raised against a peptide within the N-terminal region of SATB1.

Buffer: Purified IgG in 70 mM Tris (pH 8), 105 mM NaCl, 31 mM glycine, 0.07 mM EDTA, 30% glycerol and 0.035% sodium azide. Sodium azide is highly toxic.

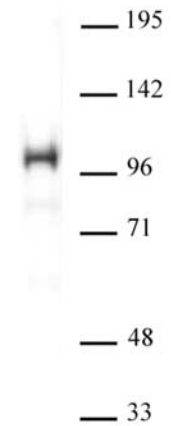
Application Notes:

Applications Validated by Active Motif:

WB: 1:500 - 1:2,000 dilution

Storage and Guarantee: Some products may be shipped at room temperature. This will not affect their stability or performance. Avoid repeated freeze/thaw cycles by aliquoting items into single-use fractions for storage at -20°C for up to 2 years. Keep all reagents on ice when not in storage. This product is guaranteed for 12 months from date of receipt.

This product is for research use only and is not for use in diagnostic procedures.

**SATB1 antibody (pAb) tested by Western blot.**

Whole cell extract of mouse thymus cells (30 µg per lane) probed with SATB1 antibody (pAb) (1:2,000 dilution).