

## CAF-1 p60 antibody (mAb)

**Catalog Nos:** 39995, 39996

**RRID:** AB\_2793423

**Clone:** 24

**Isotype:** IgG1

**Application(s):** ICC, IF, IP, WB

**Reactivity:** Human, Mouse

**Quantities:** 100 µg, 10 µg

**Purification:** Protein G Chromatography

**Host:** Mouse

**Concentration:** 1 µg/µl

**Molecular Weight:** 60 kDa

**Background:** CAF-1 p60 (Chromatin assembly factor-1 p60 subunit, CAF1B, CHAF1B) is a subunit of the CAF-1 complex that is required for the assembly of nucleosomes onto newly replicated DNA. Specifically, CAF-1 assists in the loading of the H3-H4 tetramer and may be involved in DNA damage repair. CAF-1 p60 is a WD-repeat containing protein related to HIRA.

**Immunogen:** The CAF-1 p60 antibody was raised against full-length CAF-1 purified from human 293 cells.

**Buffer:** Purified IgG in 70 mM Tris (pH 8), 105 mM NaCl, 31 mM glycine, 0.07 mM EDTA, 30% glycerol and 0.035% sodium azide. Sodium azide is highly toxic.

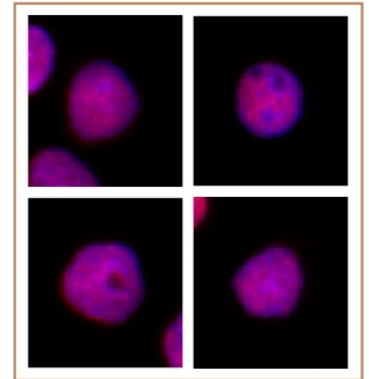
### Application Notes:

Applications Validated by Active Motif:

ICC/IF: 1:2,000 dilution

**Storage and Guarantee:** Some products may be shipped at room temperature. This will not affect their stability or performance. Avoid repeated freeze/thaw cycles by aliquoting items into single-use fractions for storage at -20°C for up to 2 years. Keep all reagents on ice when not in storage. This product is guaranteed for 12 months from date of receipt.

This product is for research use only and is not for use in diagnostic procedures.



### CAF-1 p60 antibody (mAb) tested by immunofluorescence.

Formaldehyde fixed HeLa cells stained with CAF-1 p60 antibody at a 1:2,000 dilution.



### CAF-1 p60 antibody (mAb) tested by Western blot.

CAF-1 p60 (mAb) detection by Western blot. The analysis was performed using WT mouse testis and the CAF-1 p60 (mAb) at a 1 µg/ml dilution.