

## Recombinant METTL7A protein

**Catalog No:** 81178, 81878

**Lot No:** 28818001

**Expressed In:** Baculovirus

**Quantity:** 10 µg

**Concentration:** 0.1 µg/µl

**Source:** Human

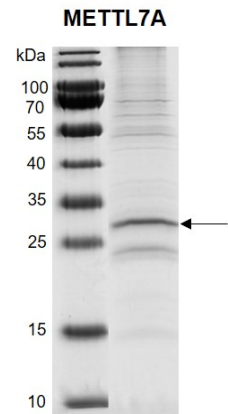
**Buffer Contents:** Recombinant METTL7A protein is supplied in 25 mM HEPES-NaOH pH 7.5, 300 mM NaCl, 10% glycerol, 0.04% Triton X-100, and 0.5 mM TCEP.

**Background:** METTL7A (Methyltransferase Like 7A), is a member of METTL family proteins. Gene Ontology (GO) annotations related to this gene include methyltransferase activity and S-adenosylmethionine-dependent methyltransferase activity. Among its related pathways are Innate Immune System.

**Protein Details:** Recombinant METTL7A protein was expressed in baculovirus expression system as the full length protein (accession number NP\_054752.3) with a C-terminal FLAG-Tag. The molecular weight of the protein is 30 kDa.

**Application Notes:** This product was manufactured as described in Protein Details. Where possible, Active Motif has developed functional or activity assays for recombinant proteins. Additional characterization such as enzyme kinetic activity assays, inhibitor screening or other biological activity assays may not have been performed for every product. All available data for a given product is shown on the lot-specific Technical Data Sheet.

**Storage and Guarantee:** Recombinant proteins in solution are temperature sensitive and must be stored at -80°C to prevent degradation. Avoid repeated freeze/thaw cycles and keep on ice when not in storage. This product is for research use only and is not for use in diagnostic procedures. This product is guaranteed for 6 months from date of arrival.



**Recombinant METTL7A protein**  
11% SDS-PAGE Coomassie staining  
MW: 30 kDa  
Purity: >45%