

Recombinant UBE2D2 protein

Catalog No: 81512, 81612

Expressed In: *E. coli*

Quantity: 100, 1000 µg

Source: Human

Buffer Contents: Recombinant UBE2D2 protein is supplied in 25 mM Tris 7.4, 300mM NaCl, 20% glycerol, 0.5 mM TCEP.

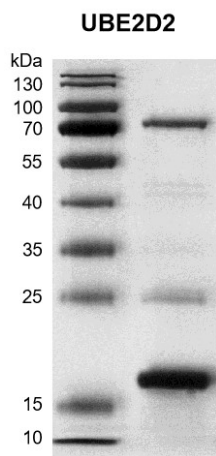
Background: **UBE2D2 (Ubiquitin-conjugating enzyme E2 D2)** also known as E2(17) KB2, PUBC1, UBC4, UBC4/5, UBCH4 and UBCH5B. **UBE2D2** is a member of the E2 ubiquitin-conjugating enzyme family which is required for post replicative DNA damage repair and plays an important role in various cellular processes. **UBE2D2** can accept ubiquitin from the E1 complex and catalyzes its covalent attachment to other proteins. Mediates the selective degradation of short-lived and abnormal proteins. Functions in the E6/E6 AP-induced ubiquitination of p53/TP53. Mediates ubiquitination of PEX5 and autoubiquitination of STUB1 and TRAF6. Involved in the signal-induced conjugation and subsequent degradation of NFKBIA, FBXW2 mediated GCM1 ubiquitination and degradation, MDM2-dependent degradation of p53/TP53 and the activation of MAVS in the mitochondria by RIGI in response to viral infection.

Protein Details: Recombinant UBE2D2 protein that includes full length of human UBE2D2 protein (accession number NP_003330.1) was expressed in *E. coli* and contains an N-terminal His tag with a molecular weight of 18.90 kDa. The purity of the protein is ≥ 70% by SDS-PAGE.

Application Notes: This product was manufactured as described in Protein Details. Where possible, Active Motif has developed functional or activity assays for recombinant proteins. Additional characterization such as enzyme kinetic activity assays, inhibitor screening or other biological activity assays may not have been performed for every product. All available data for this product is shown.

Storage and Guarantee: Recombinant proteins in solution are temperature sensitive and must be stored at -80°C to prevent degradation. Avoid repeated freeze/thaw cycles and keep on ice when not in storage. This product is guaranteed for 6 months from date of receipt.

This product is for research use only and is not for use in diagnostic procedures.

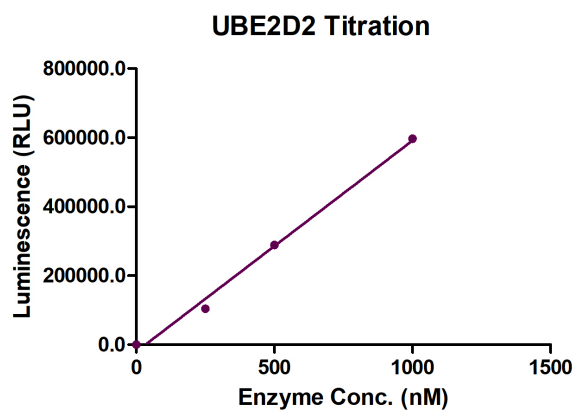


Recombinant UBE2D2 protein gel.

UBE2D2 protein was run on a 12.5% SDS-PAGE gel and stained with Coomassie Blue.

MW: 18.90 kDa

Purity: >70%



AMP-Glo assay for UBE2D2 activity

7.9 μ M ubiquitin, 63 nM UBA1 and 25 μ M ATP were incubated with different concentrations of UBE2D2 in 10 μ l reaction system containing 40 mM Tris-HCl pH 7.4, 20 mM MgCl₂, 0.5 mM DTT, 0.1 mg/ml BSA at 37°C for 1 hour. 10 μ l of AMP-Glo Reagent I was added to the reaction and incubated for 1 hour at room temperature. Then 20 μ l of AMP-Glo Detection Solution was added and luminescence were read after another 30 min incubation.