

## Recombinant EEF1AKMT4 (2-255) protein

---

**Catalog No:** 82014, 82614

**Quantity:** 100, 1000 µg

**Expressed In:** *E. coli*

**Source:** Human

**Buffer Contents:** Recombinant eEF1AKMT4 (2-255) protein is in 25 mM Tris 8.0, 300mM NaCl, 20% glycerol, 0.5 mM TCEP.

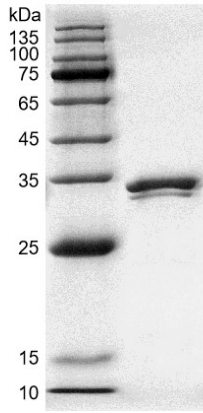
**Background:** eEF1AKMT4 (EEF1A lysine methyltransferase 4) is a Protein-lysine methyltransferase that efficiently catalyzes three successive methylations on 'Lys-36' in eukaryotic translation elongation factor 1 alpha (EEF1A1 or EEF1A2).

**Protein Details:** Recombinant eEF1AKMT4 (2-255) protein that includes amino acids 2-255 of human eEF1AKMT4 protein (accession number NP\_115707.2) was expressed in *E. coli* and contains an N-terminal His and FLAG tag with a molecular weight of 31.46 kDa. The purity of the protein is ≥ 90% by SDS-PAGE.

**Application Notes:** This product was manufactured as described in Protein Details. Where possible, Active Motif has developed functional or activity assays for recombinant proteins. Additional characterization such as enzyme kinetic activity assays, inhibitor screening or other biological activity assays may not have been performed for every product. All available data for a given product is shown on the lot-specific Technical Data Sheet.

**Storage and Guarantee:** Recombinant proteins in solution are temperature sensitive and must be stored at -80°C to prevent degradation. Avoid repeated freeze/thaw cycles and keep on ice when not in storage. This product is for research use only and is not for use in diagnostic procedures. This product is guaranteed for 6 months from date of arrival.

### eEF1AKMT4 (2-255)



**Recombinant eEF1AKMT4 (2-255) protein 12.5% SDS-PAGE Coomassie staining**

MW: 31.46 kDa

Purity:  $\geq 90\%$

### Recombinant eEF1AKMT4 (2-255) protein activity assay

2  $\mu\text{M}$  Recombinant eEF1A1 (Cat. No. 81219) was incubated with 0  $\mu\text{M}$ , 0.5  $\mu\text{M}$ , 1  $\mu\text{M}$ , and 2  $\mu\text{M}$  eEF1AKMT4 (2-255) protein in a 30  $\mu\text{l}$  reaction system containing 50 mM Tris-HCl pH 7.8, 50 mM KCl, 5 mM MgCl<sub>2</sub>, 1 mM GTP and 50  $\mu\text{M}$  SAM for 1 hr at 37°C and 3 hr at RT. Reaction products were detected by Western blot using eEF1A K36me3 antibody (in-house).

