

AbFlex® JMJD2B / KDM4B antibody (rAb)

Catalog Nos: 91305, 91306**Isotype:** IgG2a**Application(s):** IP, WB**Reactivity:** Human**Quantities:** 100 µg, 10 µg**Purification:** Protein A Chromatography**Host:** Mouse**Concentration:** 1 µg/µl**Molecular Weight:** 130 kDa

Background: AbFlex® antibodies are recombinant antibodies (rAbs) that have been generated using defined DNA sequences to produce highly specific, reproducible antibodies. Each AbFlex antibody contains a 6xHis Tag, a Biotinylation Tag for enzymatic biotin conjugation using the biotin ligase, BirA, and a sortase recognition motif (LPXTG) to attach a variety of labels directly to the antibody including fluorophores, enzymatic substrates (HRP, AP), peptides, drugs as well as solid supports. AbFlex® JMJD2B / KDM4B antibody was expressed in 293 cells and contains mouse immunoglobulin heavy and light chains.

JMJD2B / KDM4B (JmjC domain-containing histone demethylation protein 3B, Jumonji domain-containing protein 2B, JHDM3B) is a histone demethylase that has been shown to demethylate histone H3 trimethylated at lysine 9. JMJD2B / KDM4B is physically associated with the MLL2 methyltransferase complex where it serves as a co-factor for ERα-mediated transcriptional activation.

Immunogen: This antibody was raised against full-length recombinant human lysine-specific demethylase 4B (KDM4B) protein.

Buffer: 140 mM Hepes, pH 7.5, 70 mM NaCl, 32 mM NaOAc, 0.035% sodium azide, and 30% glycerol. Sodium azide is highly toxic.

Application Notes:

Applications Validated by Active Motif:

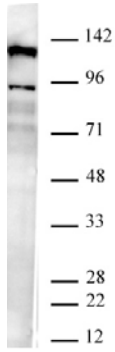
IP: 4 µg per IP

WB*: 0.05 – 2 µg/ml

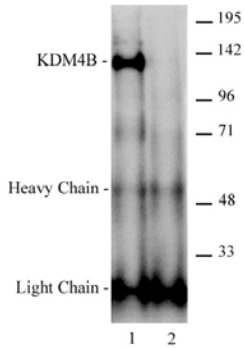
*Note: many chromatin-bound proteins are not soluble in a low salt nuclear extract and fractionate to the pellet. Therefore, we recommend a High Salt / Sonication Protocol when preparing nuclear extracts for Western Blot.

Storage and Guarantee: Some products may be shipped at room temperature. This will not affect their stability or performance. Avoid repeated freeze/thaw cycles by aliquoting items into single-use fractions for storage at -20°C for up to 2 years. Keep all reagents on ice when not in storage. This product is guaranteed for 12 months from date of receipt.

This product is for research use only and is not for use in diagnostic procedures.



AbFlex[®] JMJD2B / KDM4B antibody (rAb) tested by Western blot.
 20 µg of K562 nuclear extract was run on SDS-PAGE and probed with
 AbFlex JMJD2B / KDM4B antibody at 2 µg/ml.



AbFlex[®] JMJD2B / KDM4B antibody (rAb) tested antibody tested by
 immunoprecipitation.
 4 µg of AbFlex JMJD2B / KDM4B antibody (Lane 1) or an unrelated mouse
 IgG (Lane 2) was used to immunoprecipitate JMJD2B / KDM4B from 500 µg
 of K562 nuclear extract. The immunoprecipitated protein was detected by
 Western blotting using a JMJD2B / KDM4B antibody, Cat. No. 61211 at a
 dilution of 1:500.