

## AbFlex® KDM1B / LSD2 antibody (rAb)

**Catalog Nos:** 91327, 91328

**RRID:** AB\_3216345

**Application(s):** WB

**Reactivity:** Human

**Quantities:** 100 µg, 10 µg

**Purification:** Protein A Chromatography

**Host:** Mouse

**Isotype:** IgG2a

**Molecular Weight:** Predicted: 93kDa / Observed: 105 kDa

**Background:** AbFlex® antibodies are recombinant antibodies (rAbs) that have been generated using defined DNA sequences to produce highly specific, reproducible antibodies. Each AbFlex antibody contains a 6xHis Tag, a Biotinylation Tag for enzymatic biotin conjugation using the biotin ligase, BirA, and a sortase recognition motif (LPXTG) to attach a variety of labels directly to the antibody including fluorophores, enzymatic substrates (HRP, AP), peptides, drugs as well as solid supports. AbFlex® KDM1B / LSD2 was expressed as full-length IgG with mouse immunoglobulin heavy and light chains (IgG2a isotype) in CHO cells.

**KDM1B / LSD2** (Lysine (K)-Specific Demethylase 1B / Lysine-Specific Histone Demethylase 2) is a histone demethylase that demethylates Lys4 of histone H3, a specific tag for epigenetic transcriptional activation, thereby acting as a corepressor. Required for de novo DNA methylation of a subset of imprinted genes during oogenesis. Demethylates both mono- and dimethylated Lys4 of histone H3. Has no effect on tri-methylated Lys4, mono-, di- or tri-methylated Lys9, mono-, di- or tri-methylated Lys27, mono-, di- or tri-methylated Lys36 of histone H3, or on mono-, di- or tri-methylated Lys20 of histone H4 (By similarity).

**Immunogen:** This antibody was raised against full length human LKDM1B / LSD2 recombinant protein.

**Buffer:** 140 mM Hepes, pH 7.5, 70 mM NaCl, 32 mM NaOAc, 0.035% sodium azide, and 30% glycerol. Sodium azide is highly toxic.

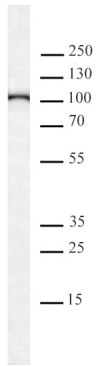
### Application Notes:

Applications Validated by Active Motif:

WB\*: 0.5 - 2 µg/ml

\*Note: Many chromatin-bound proteins are not soluble in a low salt nuclear extract and fractionate to the pellet. Therefore, we recommend a High Salt / Sonication Protocol when preparing nuclear extracts for Western blot. For optimal results, we also recommend the addition of 0.05% Tween-20 to all blocking solutions to reduce background. Individual optimization may be required.

**Storage and Guarantee:** Some products may be shipped at room temperature. This will not affect their stability or performance. Avoid repeated freeze/thaw cycles by aliquoting items into single-use fractions for storage at -20°C for up to 2 years. Keep all reagents on ice when not in storage. This product is guaranteed for 12 months from date of receipt. This product is for research use only and is not for use in diagnostic procedures.



**AbFlex® KDM1B / LSD2 antibody tested by Western blot.**

20 µg of K562 nuclear extract\* was run on SDS-PAGE and probed with AbFlex KDM1B / LSD2 antibody at 0.5 µg/ml.