

AbFlex® KAT2A (GCN5) antibody (rAb)

Catalog Nos: 91435, 91436**RRID:** AB_3216379**Application(s):** WB**Reactivity:** Human, Mouse**Quantities:** 100 µg, 10 µg**Purification:** Protein A Chromatography**Host:** Mouse**Isotype:** IgG2a, k**Molecular Weight:** 95 kDa

Background: AbFlex® antibodies are recombinant antibodies (rAbs) that have been generated using defined DNA sequences to produce highly specific, reproducible antibodies. Each AbFlex antibody contains a 6xHis Tag, a Biotinylation Tag for enzymatic biotin conjugation using the biotin ligase, BirA, and a sortase recognition motif (LPXTG) to attach a variety of labels directly to the antibody including fluorophores, enzymatic substrates (HRP, AP), peptides, drugs as well as solid supports.

AbFlex® **KAT2A (GCN5)** antibody was expressed as full-length IgG with mouse immunoglobulin heavy and light chains (IgG2a isotype) in mammalian CHO cells.

GCN5 (General control of nutrition 5, KAT2A) is a histone acetyltransferase (HAT) and serves as a transcriptional activator. GCN5 is a component of the SAGA and ATAC complexes, which have histone acetyltransferase activity for histones H3 and H4. **GCN5** is required for neural tube closure and embryonic development.

Immunogen: This antibody was raised against a synthetic peptide coupled to ovalbumin of human GCN5-Long.

Buffer: Purified IgG in 140 mM Hepes, pH 7.5, 70 mM NaCl, 32 mM NaOAc, 30% glycerol and 0.035% sodium azide. Sodium azide is highly toxic.

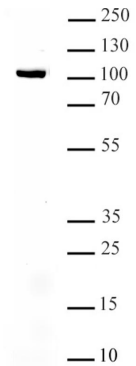
Application Notes:

Applications Validated by Active Motif:

WB: 0.5-2 µg/ml

Storage and Guarantee: Some products may be shipped at room temperature. This will not affect their stability or performance. Avoid repeated freeze/thaw cycles by aliquoting items into single-use fractions for storage at -20°C for up to 2 years. Keep all reagents on ice when not in storage. This product is guaranteed for 12 months from date of receipt.

This product is for research use only and is not for use in diagnostic procedures.

**AbFlex® KAT2A (GCN5) antibody (rAb) tested by Western blot.**

Whole cell extract of HEK293 (20 µg / lane) was probed with KAT2A (GCN5 antibody (pAb) at a 2 µg/mL.