

AbFlex® PARP1 antibody (rAb)

Catalog Nos: 91479, 91480

Application(s): IF, IP, WB

Reactivity: Human

Quantities: 100 µg, 10 µg

Purification: Protein A Chromatography

Host: Rabbit

Isotype: IgG

Molecular Weight: 113.08

Background: AbFlex® antibodies are recombinant antibodies (rAbs) that have been generated using defined DNA sequences to produce highly specific, reproducible antibodies. Each AbFlex antibody contains a 6xHis Tag, a Biotinylation Tag for enzymatic biotin conjugation using the biotin ligase, BirA, and a sortase recognition motif (LPXTG) to attach a variety of labels directly to the antibody including fluorophores, enzymatic substrates (HRP, AP), peptides, drugs as well as solid supports.

AbFlex® PARP1 antibody was expressed as full-length IgG with rabbit immunoglobulin heavy and light chains in mammalian HEK293 cells.

PARP1 (Poly (ADP-Ribose) Polymerase 1, also known as PARP; PPOL; ADPRT; ARTD1; ADPRT1; PARP-1; ADPRT 1; pADPRT-1) is a chromatin-associated enzyme, poly(ADP-ribose) transferase, which modifies various nuclear proteins by poly(ADP-ribose) ation. Poly (ADP-ribose) ation is dependent on DNA and is involved in the regulation of various important cellular processes such as differentiation, proliferation, and tumor transformation and in the regulation of the molecular events involved in the recovery of cells from DNA damage.

Immunogen: This PARP1 antibody was raised against a peptide of human PARP1.

Buffer: Purified IgG in 140 mM Hepes, pH 7.5, 70 mM NaCl, 32 mM NaOAc, 40% glycerol and 0.035% sodium azide. Sodium azide is highly toxic.

Application Notes:

Applications Validated by Active Motif:

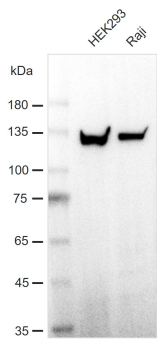
WB: 0.5 - 2 µg/ml

IP: 2 µg per IP

IF: 2 µg/ml

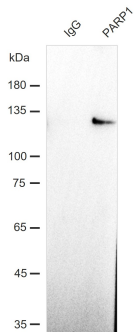
Storage and Guarantee: Some products may be shipped at room temperature. This will not affect their stability or performance. Avoid repeated freeze/thaw cycles by aliquoting items into single-use fractions for storage at -20°C for up to 2 years. Keep all reagents on ice when not in storage. This product is guaranteed for 12 months from date of receipt.

This product is for research use only and is not for use in diagnostic procedures.



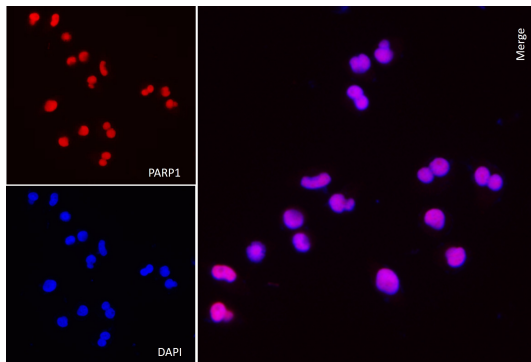
AbFlex® PARP1 antibody (rAb) tested by Western Blot.

Detection of PARP1 by Western blot analysis using 40 µg of HEK293 (Lane 1) and Raji (Lane 2) whole cell extracts and probed with antibody at 0.5 µg/ml.



AbFlex® PARP1 rAb antibody tested by immunoprecipitation.

2 µg of antibody was used to immunoprecipitate PARP1 from 1 mg of HEK293F whole cell extract, 40% IP product (Lane 2) was run on SDS-PAGE and probed with the same antibody at 0.5 µg/ml. Tween-20 at 0.1% was added to blocking buffers to perform Western blot and reduce background. 2 µg of rabbit IgG was used as negative control for IP (Lane 1).



AbFlex® PARP1 rAb antibody tested by immunofluorescence.

PARP1 was detected in human HeLa cells using AbFlex PARP1 (rAb) at 2 µg/mL, followed by Multi-rAb CoraLite® Plus 594-Goat Anti-Rabbit Recombinant Secondary Antibody (H+L).