

AbFlex® PARP2 antibody (rAb)

Catalog Nos: 91487, 91488

Application(s): IF, IP, WB

Reactivity: Human

Quantities: 100 µg, 10 µg

Purification: Protein A Chromatography

Host: Rabbit

Isotype: IgG

Molecular Weight: 66 kDa

Background:

AbFlex® antibodies are recombinant antibodies (rAbs) that have been generated using defined DNA sequences to produce highly specific, reproducible antibodies. Each AbFlex® antibody contains a 6xHis Tag, a Biotinylation Tag for enzymatic biotin conjugation using the biotin ligase, BirA, and a sortase recognition motif (LPXTG) to attach a variety of labels directly to the antibody including fluorophores, enzymatic substrates (HRP, AP), peptides, drugs as well as solid supports.

AbFlex® **PARP2** antibody was expressed as full-length IgG with rabbit immunoglobulin heavy and light chains in mammalian HEK293 cells.

PARP2 (Poly(ADP-Ribose) Polymerase 2, also known as ARTD2; ADPRT2; PARP-2; ADPRTL2; ADPRTL3; pADPRT-2) contains a catalytic domain and transferase but a poly(ADP-ribosyl)ation reaction. This protein has a catalytic domain which is homologous to that of poly (ADP-ribosyl) transferase but lacks an N-terminal DNA binding domain which activates the C-terminal catalytic domain of poly (ADP-ribosyl) transferase.

Immunogen: This PARP-2 antibody was raised against a recombinant protein corresponding to the C-terminal region of human PARP-2.

Buffer: Purified IgG in 140 mM Hepes, pH 7.5, 70 mM NaCl, 32 mM NaOAc, 40% glycerol and 0.035% sodium azide. Sodium azide is highly toxic.

Application Notes:

Applications Validated by Active Motif:

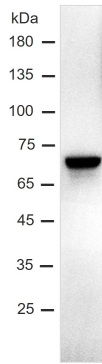
WB: 0.5 - 2 µg/mL

IP: 2 µg per IP

IF: 2 µg/mL

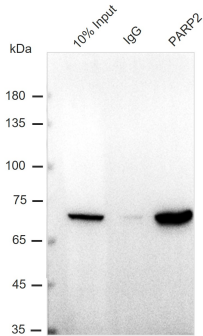
Storage and Guarantee: Some products may be shipped at room temperature. This will not affect their stability or performance. Avoid repeated freeze/thaw cycles by aliquoting items into single-use fractions for storage at -20°C for up to 2 years. Keep all reagents on ice when not in storage. This product is guaranteed for 12 months from date of receipt.

This product is for research use only and is not for use in diagnostic procedures.



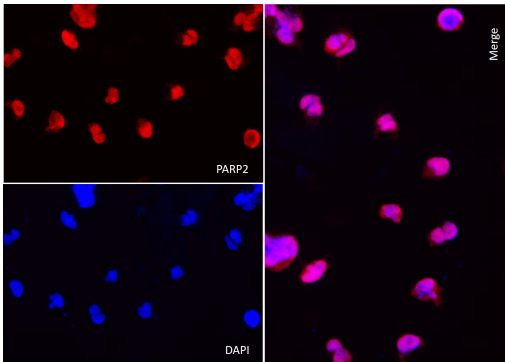
AbFlex® PARP2 rAb antibody tested by Western blot.

Raji whole cell extract (40 µg) was probed with AbFlex® PARP2 antibody at 0.5 µg/mL.



AbFlex® PARP2 rAb antibody tested by immunoprecipitation.

2 µg of antibody was used to immunoprecipitate PARP2 from 1 mg of Raji whole cell extract, 40% IP product (Lane 3) and 40 µg of Input proteins (Lane 1) were then run on SDS-PAGE and probed with the same antibody at 0.5 µg /ml. Tween-20 at 0.1% was added to blocking buffers to perform Western blot and reduce background. 2 µg of rabbit IgG was used as negative control for IP (Lane 2).



AbFlex® PARP2 rAb antibody tested by immunofluorescence.

PARP2 was detected in human Raji cells using AbFlex® PARP2 antibody at 2 µg/mL. Followed by Multi-rAb Coralite® Plus 594-Goat Anti-Rabbit Recombinant Secondary Antibody (H+L). DAPI at 594 nm.