

CLOCK antibody (rAb), 100 µl

Catalog No: 91593**Clone:** 1123**Application(s):** WB**Reactivity:** Human, Mouse, Rat**Volume:** 100 µl**Purification:** Protein A Chromatography**Host:** Rabbit**Isotype:** IgG**Molecular Weight:** 95 kDa

Background: Circadian locomotor output cycles protein kaput (**CLOCK**), also named as BHLHE8 or KIAA0334, is an 846 amino acid protein, which contains one bHLH domain, one PAC domain, and two PAS domains. **CLOCK** localizes in the nucleus and cytoplasm. **CLOCK** is expressed in all tissues examined including spleen, thymus, prostate, testis, ovary, small intestine, colon, leukocytes, heart, brain, placenta, lung, liver, skeletal muscle, kidney and pancreas. ARNTL/2-**CLOCK** heterodimers activate E-box element (5'-CACGTG-3') transcription of a few proteins of the circadian clock, such as PER1 and PER2.

Immunogen: This antibody was raised against the CLOCK fusion protein.

Buffer: Purified IgG in PBS, pH 7.3, with 50% glycerol and 0.02% sodium azide. Sodium azide is highly toxic.

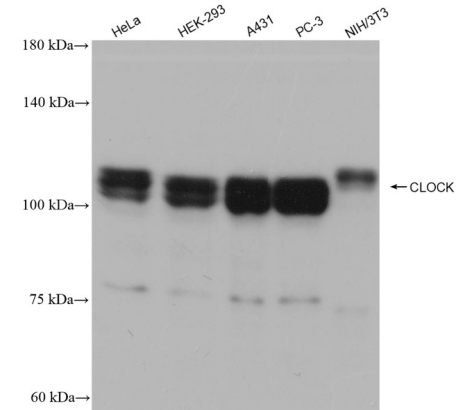
Application Notes:

Applications Validated by Active Motif:

WB: 1:1000-1:8000 dilution

Storage and Guarantee: Some products may be shipped at room temperature. This will not affect their stability or performance. Avoid repeated freeze/thaw cycles by aliquoting items into single-use fractions for storage at -20°C for up to 2 years. Keep all reagents on ice when not in storage. This product is guaranteed for 12 months from date of receipt.

This product is for research use only and is not for use in diagnostic procedures.

**CLOCK antibody (rAb) tested by Western blot.**

Detection of CLOCK by Western blot analysis using various lysates and probed with CLOCK antibody at 1:4000 dilution.