

## CREB1 phospho Ser133 (rAb), 100 µg

**Catalog No:** 91681

**Clone:** 5H5

**Application(s):** IHC, WB

**Reactivity:** Human, Mouse

**Quantity:** 100 µg

**Purification:** Protein A Chromatography

**Host:** Rabbit

**Isotype:** IgG

**Molecular Weight:** 35 kDa

**Background:** The cAMP-response element binding protein (**CREB**) is localized in the nucleus and acts as a transcription factor, which binds to the cAMP response element (CRE) of the promoters of its target genes, upon phosphorylation at Ser133 by different receptor-activated protein kinases, such as protein kinase A (PKA), calmodulin-dependent protein kinase (CaMK), mitogen-activated protein kinases (MAPK), and other kinases. The activity of **CREB1** in neurons has been correlated with various intracellular processes, including proliferation, differentiation, survival, long-term synaptic potentiation, neurogenesis, and neuronal plasticity. **CREB1** belongs to the CREB/activating transcription factor (ATF) family of transcription factors.

**Immunogen:** This information is proprietary to Active Motif and/or its suppliers.

**Buffer:** Purified IgG in PBS, pH 7.3, with 50% glycerol and 0.02% sodium azide. Sodium azide is highly toxic.

### Application Notes:

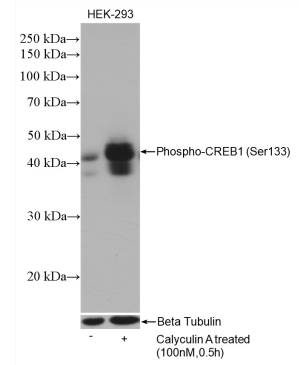
Applications Validated by Active Motif:

WB: 1:5000-1:50000 dilution

IF: 1:1000-1:4000 dilution

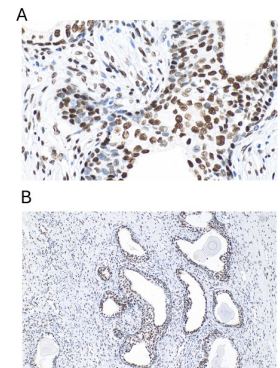
**Storage and Guarantee:** Some products may be shipped at room temperature. This will not affect their stability or performance. Avoid repeated freeze/thaw cycles by aliquoting items into single-use fractions for storage at -20°C for up to 2 years. Keep all reagents on ice when not in storage. This product is guaranteed for 12 months from date of receipt.

This product is for research use only and is not for use in diagnostic procedures.



### CREB1 antibody (rAb) tested by Western blot.

Detection of CREB1 by Western blot analysis using 30µg of HEK293 (Lane 1: Non-treated and Lane 2: Calyculin A treated) and probed with CREB1 antibody at 1:20000 dilution. The membrane was stripped and re-blotted with Beta-tubulin antibody as a loading control.



### CREB1 antibody (rAb) tested by Immunohistochemistry.

CREB1 antibody was used in IHC to stain paraffin-embedded human prostate cancer tissue at a 1:2000 dilution (under 40X lens) (Panel A). CREB1 antibody was used in IHC to stain paraffin-embedded mouse colon tissue at a 1:2000 dilution (under 10X lens) (Panel B). Heat me antigen retrieval with Tris-EDTA buffer (pH 9.0).