

WT1 antibody (rAb), 100 µl

Catalog No: 91751

Clone: 2J13

Application(s): IHC, WB

Reactivity: Human, Mouse

Volume: 100 µl

Purification: Protein A Chromatography

Host: Rabbit

Isotype: IgG

Molecular Weight: 49 kDa

Background: WT1 antibody (rAb) tested by Western blot.

Detection of WT1 by Western blot analysis using various lysates and probed with WT1 antibody at 1:5000 dilution.

Immunogen: This antibody was raised against the WT1 fusion protein.

Buffer: Purified IgG in PBS, pH 7.3, with 50% glycerol and 0.02% sodium azide. Sodium azide is highly toxic.

Application Notes:

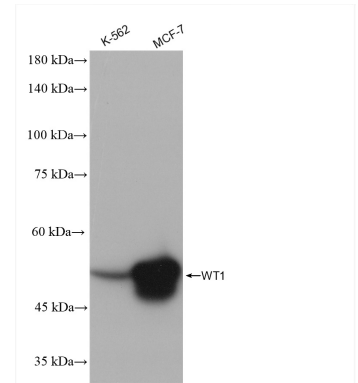
Applications Validated by Active Motif:

WB: 1:2000-1:10000 dilution

IHC: 1:200-1:800 dilution

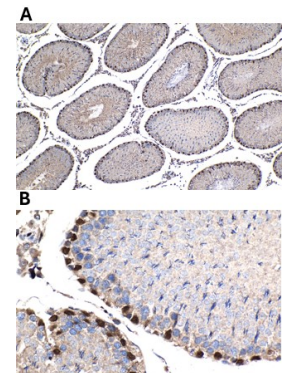
Storage and Guarantee: Some products may be shipped at room temperature. This will not affect their stability or performance. Avoid repeated freeze/thaw cycles by aliquoting items into single-use fractions for storage at -20°C for up to 2 years. Keep all reagents on ice when not in storage. This product is guaranteed for 12 months from date of receipt.

This product is for research use only and is not for use in diagnostic procedures.



WT1 antibody (rAb) tested by Western blot.

Detection of WT1 by Western blot analysis using various lysates and probed with WT1 antibody at 1:5000 dilution.



WT1 antibody (rAb) tested by Immunohistochemistry.

WT1 antibody was used in IHC to stain mouse testis tissue at a 1:400 dilution (under 10X lens (Panel A) and under 40X lens (Panel B). Heat me antigen retrieval with Tris-EDTA buffer (pH 9.0).